

File No. 100287

Petitions and Communications received from April 20, 2010, through April 26, 2010, for reference by the President to Committee considering related matters, or to be ordered filed by the Clerk on May 4, 2010.

From Health Commission, submitting resolution memorializing the agreements reached by the Health Commission and California Pacific Medical Center regarding its Institutional Master Plan. Copy: Each Supervisor (1)

From Civil Service Commission, regarding the salary survey for registered nurses, for FY2010-2011. Copy: Each Supervisor (2)

From Municipal Transportation Agency, submitting request for waiver of Administrative Code Chapter 12B for the Training Network. (3)

From National Humane Education Society, thanking the Board of Supervisors for passing legislation that urges the citizens of San Francisco to eat vegetarian meals on Mondays. (4)

From the Port, regarding the Third Quarter Contracting Activity Report for FY2009-2010. Copy: Each Supervisor (5)

From Human Services Agency, submitting the Human Services Agency's revised FY2009-2010 savings projections for the Human Services Care Fund. Copy: Each Supervisor (6)

From Branch Library Improvement Program, submitting the 2000 Branch Library Improvement Bond Quarterly Report for the period of January through March 2010. (7)

From Department of Public Health, submitting report of agencies awarded federal funds by the Department of Public Health in FY2008-2009. Copy: Each Supervisor (8)

From concerned citizens, submitting opposition to the Municipal Transportation Agency's proposed changes to parking meters in the City. 12 letters (9)

From Golden Gate Park Senior Center, urging the Recreation and Parks Commission not to lay off the two recreation directors that work at the Golden Gate Park Senior Center. Copy: Supervisor Mar (10)

From concerned citizen, submitting opposition to approval of the Conditional Use Application on property located at 725 Taraval Street. File No. 100382 (11)

From David Ross, urging the Board of Supervisors to uphold the Environmental Impact Report for 555 Washington Street. File No. 100443 (12)

From concerned citizens, submitting opposition to the Environmental Impact Report for 555 Washington Street. File No. 100443, 13 letters (13)

From concerned citizens, urging the Board of Supervisors to deny the Conditional Use Application for the Nob Hill Masonic Center at 1111 California Street. File No. 100451, Copy: Each Supervisor, 2 letters (14)

From concerned citizens, urging the Board of Supervisors to approve the Conditional Use Application for the Nob Hill Masonic Center at 1111 California Street. File No. 100451, 2 letters (15)

From concerned citizens, submitting opposition to the proposed cell tower at Miraloma Community Church. 2 letters (16)

From concerned citizens, submitting support for the proposed legislation concerning the sit/lie law. File No. 100233, Copy: Each Supervisor, 2 letters (17)

From Mary Jessup, submitting opposition for the proposed legislation concerning the sit/lie law. File No. 100233 (18)

From concerned citizens, submitting opposition to proposed legislation regarding development impact fees. File No. 091251, 2 letters (19)

From Secretary of State, Elections Division, submitting copy of the cassette-recorded version of the Official California Voter Information Guide for the June 8, 2010, Statewide Direct Primary Election. (20)

From Melanie Macchio, regarding the proposed project at Beach Chalet Fields in Golden Gate Park. File No. 100053 (21)

From Janet Gracyk, expressing dismay at the Planning Department's Categorical Exemption for the Beach Chalet Soccer Fields Project. File No. 100067 (22)

From Office of the Controller, submitting report regarding the monitoring of nonprofit organizations that received federal funding through the Department of Public Health in FY2008-2009. (23)

From concerned citizen, submitting support for legislation that requires a review of the management contract with the San Francisco Zoological Society to operate the city-owned San Francisco Zoo. (24)

From US Army Corps of Engineers, regarding proposal to accept funds from the California High Speed Rail Authority. (25)

From Office of the Controller, submitting the Economic Barometer Report for February 2010. (26)

From concerned citizen, submitting opposition to California Pacific Medical Center's "Master Plan" for St. Luke's Hospital and the new Cathedral Hill facility. (27)

From Christine Temple-Wolfe, regarding Arizona and illegal citizens. (28)

James M. Ilfig  
President

Edward A. Chow, M.D.  
Vice President

Sonia E. Melara  
Commissioner

Margine A. Sako  
Commissioner

David J. Sanchez, Jr., Ph.D.  
Commissioner

Steven Tierney, Ed.D.  
Commissioner

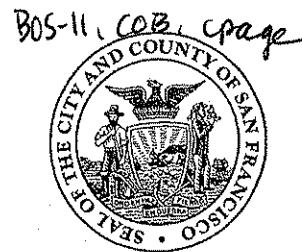
Catherine M. Waters, R.N., Ph.D.  
Commissioner

## HEALTH COMMISSION

CITY AND COUNTY OF SAN FRANCISCO

Gavin C. Newsom, Mayor

Department of Public Health



Mitchell H. Katz, M.D.  
Director of Health

Mark Morewitz, MSW  
Executive Secretary

TEL (415) 554-2666  
FAX (415) 554-2665

Web Site: <http://www.sfdph.org>

RECEIVED  
BOARD OF SUPERVISORS  
SAN FRANCISCO

2010 APR 21 PM 1:04

April 20, 2010

Ron Miguel, President  
San Francisco Planning Commission  
1650 Mission Street  
San Francisco, CA 94103

Dear President Miguel,

The Health Commission recently passed Resolution 02-10, "Resolution Memorializing the Agreements Reached by the Health Commission and California Pacific Medical Center Regarding Its Institutional Master Plan," which I have enclosed for your review.

Prior to passing the Resolution, the Commission completed the following processes:

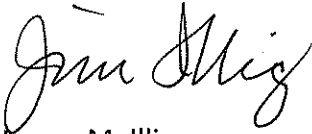
- Heard public comment and held focused discussion at four public meetings;
- Participated in a joint hearing with the Planning Commission;
- Completed extensive analysis of the CPMC IMP;
- Convened a working group to create effective action steps to address Commission concerns about the CPMC IMP. This group did not concentrate on the land use of the new CPMC Van Ness campus but rather focused on issues related to the St. Luke's campus and serving the public health need of poor and uninsured San Franciscans.

Within the resolution, we have asked for regular updates from CPMC on progress in completing the agreements we have made with them. We forward you this Resolution with a request to incorporate it into the Planning Commission's Conditions of Approval for CPMC's future facilities building plans. This will ensure accountability and oversight and keep the public informed of CPMC's progress as the Institutional Master Plan is implemented.

①

Please let me know if I can be of assistance in your consideration of this matter.

Sincerely,

A handwritten signature in black ink that reads "Jim Illig". The signature is written in a cursive, flowing style.

James M. Illig,  
President

Cc: Planning Commission  
Board of Supervisors  
John Raiham  
Linda Avery  
Angela Calvillo

**HEALTH COMMISSION  
RESOLUTION 02-10  
RESOLUTION MEMORIALIZING THE AGREEMENTS REACHED  
BY THE HEALTH COMMISSION AND THE CALIFORNIA PACIFIC MEDICAL CENTER  
REGARDING ITS INSTITUTIONAL MASTER PLAN**

WHEREAS, the Institutional Master Plan (IMP) process provides the City and its policy bodies, including the Health Commission and the Planning Commission, with an opportunity to ensure that proposed changes related to health care institutions are reviewed to ensure the protection of public health and consideration of neighborhood and environmental integrity; and,

WHEREAS, City and County of San Francisco Ordinance 0279-07 amending the IMP process calls for, "the Department of Public Health (DPH) to analyze the relationship between the city's long-term health care needs and facility planning for medical institutions...to provide the Planning Department with an important perspective for review of medical institutions' master plans. Such analysis will help prevent loss of services and inefficient or redundant development of healthcare services in San Francisco"; and,

WHEREAS, California Pacific Medical Center's (CPMC) IMP was presented to the Health Commission in May 2009 and at its July 21, 2009 hearing, the Health Commission adopted Resolution 10-09 supporting CPMC's plans to rebuild facilities to meet the State's current seismic requirements; and,

WHEREAS, to ensure the CPMC IMP results in the best possible health plan for the City and County of San Francisco, the Health Commission put forward eight specific recommendations that stemmed from four public hearings; the Health Commission Task Force on CPMC's IMP, a work group using a consensus model, met to discuss and analyze progress in fulfilling these recommendations which resulted in the following agreements with CPMC:

1. Recommendation: CPMC should increase its charity care, including but not limited to Healthy San Francisco, to a share comparable to other hospitals in San Francisco.  
*Agreement: CPMC will increase its charity care contribution 79% in a five-year period, from \$5,315,000 in 2007 to \$9,500,000 by 2012.*
2. Recommendation: CPMC should increase its care of patients with Medicaid to a share comparable to other hospitals in San Francisco.  
*Agreement: CPMC will continue to serve Medicaid patients throughout its system, retaining its Medicaid contract with the State of California providing access through the Sutter Pacific Medical Foundation clinics and the St. Luke's Health Care Center. CPMC will also increase its amount of Medicaid shortfall (the uncompensated portion of providing care to Medicaid patients) by 22% in a five-year period, from \$53,369,000 in 2007 up to \$65,000,000 by 2012.*
3. Recommendation: CPMC should replace lost skilled-nursing facility (SNF) beds with long-term care services for an equal number of persons.

*Agreement: CPMC will provide a total of 100 skilled nursing beds, retaining the 38 beds currently located at the Davies Campus and adding 62 new SNF beds. Because of the shortage of SNF beds in the community, no existing community-based beds will be utilized. CPMC will maintain ongoing reports to the Commission concerning these options and future decisions.*

4. Recommendation: CPMC should replace lost sub-acute beds with placements for all individuals currently in those beds.

*Agreement: CPMC chairs the San Francisco Hospital Council work group, to develop concrete solutions for providing sub-acute care beds in the community. The recommendations will be heard by the Hospital Council in June 2010. When the St. Luke's inpatient tower is decommissioned, CPMC will place all remaining sub-acute care patients in its other hospital campuses, or in community facilities.*

5. Recommendation: CPMC should make a commitment that the St. Luke's campus will be operated as a community hospital for at least 20 years.

*Agreement: CPMC is constructing a new \$250,000,000 inpatient facility at St. Luke's and is committed to maintaining St. Luke's as an integral part of their larger healthcare system. In September 2008, CPMC's Board of Directors unanimously accepted the recommendations of the Blue Ribbon Panel, directing executive management to include a revitalized St. Luke's Campus, with all the services of a community hospital, as part of CPMC's IMP.*

6. Recommendation: CPMC should ensure that all of the recommendations of the Blue Ribbon Taskforce be fully implemented.

*Agreement: CPMC will implement all the recommendations of the Blue Ribbon Panel, with the two exceptions. SNF beds will be provided within the CPMC system and through new community-based facilities. Inpatient pediatric beds will be built into the new Cathedral Hill Hospital where all the support services and specialties necessary for safe and effective care will be available. These actions will provide for the services to patients envisioned by the Blue Ribbon Panel.*

7. Recommendation: The Health Commission, DPH should establish a time-limited working group with representation of a dedicated membership to analyze progress realizing these recommendations.

*Agreement: The Health Commission convened the CPMC IMP Task Force.*

8. Recommendation: CPMC should continue to partner with all sectors of the community, including Chinese Hospital, its affiliates, and the Chinese community to provide fair and affordable access to its services; and,

*Agreement: CPMC has committed to continuing its long standing partnership with Chinese Hospital, its affiliates and the Chinese community; and*

WHEREAS, on March 2, 2010, the Health Commission heard the final report of the Task Force outlining the agreements that had been reached through the consensus process; now

THEREFORE BE IT RESOLVED, the Health Commission confirms the agreements listed above as progress towards but not full implementation of the Commission's specific recommendations regarding charity care, Medicaid, sub-acute services and commitment to operate St. Luke's as a community hospital for twenty years; and,

BE IT FURTHER RESOLVED, CPMC will continue to provide the Health Commission separate charity care information for St. Luke's for as long as the hospital licenses are separate. When the hospital licenses are consolidated in 2012, CPMC will no longer provide campus-specific reporting. At that time, CPMC's charity care reporting will be revisited by the Commission. CPMC will report discharges of patients who live in St. Luke's primary service area for all campuses; and,


BE IT FURTHER RESOLVED, commencing one calendar year after acceptance of the Report of the CPMC Task Force by the Health Commission and coinciding with the hospital's reporting cycle to OSHPD, CPMC will provide written annual updates to the Commission progress towards full implementation of the recommendations in the prior year.

BE IT FURTHER RESOLVED, CPMC will report quarterly to the Health Commission through its Finance and Planning Committee on progress of the agreements listed above and the Van Ness/Cathedral Hill and St. Luke's facility development plans; and,

BE IT FURTHER RESOLVED, the Health Commission expects CPMC to continue its upward trajectory level of charity care and services to Medicaid patients and to ultimately commit to a percentage amount comparable to other hospitals in San Francisco; and,

BE IT FURTHER RESOLVED, the Health Commission is forwarding this resolution to the Planning Commission and to the Board of Supervisors for incorporation into the Planning Commission's Conditions of Approval for CPMC's future facilities building plans. This will ensure accountability and oversight and keep the public informed of CPMC's progress as the Institutional Master Plan is implemented.

I hereby certify that the San Francisco Health Commission at its meeting of March 16, 2010 adopted the foregoing resolution.

  
Mark Morewitz

Health Commission Executive Secretary





# CIVIL SERVICE COMMISSION CITY AND COUNTY OF SAN FRANCISCO

GAVIN NEWSOM  
MAYOR

BOS-11  
cpage

MORGAN R. GORRONO  
PRESIDENT

E. DENNIS NORMANDY  
VICE PRESIDENT

DONALD A. CASPER  
COMMISSIONER

MARY Y. JUNG  
COMMISSIONER

ANITA SANCHEZ  
EXECUTIVE OFFICER

April 21, 2010

The Board of Supervisors  
City Hall - Room 244  
1 Dr. Carlton B. Goodlett Place  
San Francisco, CA 94102

Dear Members of the Board:

At its meeting of April 19, 2010, the Civil Service Commission had for its consideration the Fiscal Year 2010-11 Salary Survey for Registered Nurse Classifications as provided under Charter Section A8.403. A copy of the report to the Commission prepared by the Department of Human Resources is attached.

It was the decision of the Civil Service Commission to adopt the report; Certify to the Board of Supervisors for the Acute Care Nursing Classifications the highest prevailing salary schedules in the six Bay Area Counties (Public & Private) in effect on April 15, 2010.

Please contact me at 252-3250 if there are questions or if additional information is needed.

Respectfully,

CIVIL SERVICE COMMISSION

ANITA SANCHEZ  
Executive Officer

Attachment

c: Angela Calvillo, Clerk of the Board

RECEIVED  
BOARD OF SUPERVISORS  
SAN FRANCISCO  
2010 APR 22 AM 10:54  
BY \_\_\_\_\_ AK

(2)



NOTIFICATIONS:

Ed Warshauer  
Service Employees International  
Union, Local 1021  
350 Rhode Island, Suite 100 South  
San Francisco, CA 94103

Jennifer Johnston  
Department of Human Resources  
1 South Van Ness Avenue, 4th Floor  
San Francisco, CA 94103

Michael McLaughlin  
Teamsters, Local 856  
453 San Mateo Avenue  
San Bruno, CA 94066

Elizabeth Jacobi  
Department of Public Health  
Human Resources Office  
101 Grove Street  
San Francisco, CA 94102

Micki Callahan  
Department of Human Resources  
1 South Van Ness Avenue, 4th Floor  
San Francisco, CA 94103

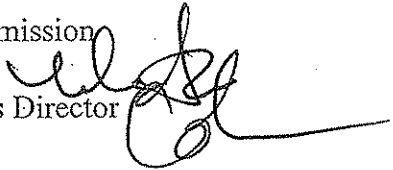
Ted Yamasaki  
Department of Human Resources  
1 South Van Ness Avenue, 4th Floor  
San Francisco, CA 94103

Martin Gran  
Department of Human Resources  
1 South Van Ness Avenue, 4th Floor  
San Francisco, CA 94103

Steve Ponder  
Department of Human Resources  
1 South Van Ness Avenue, 4th Floor  
San Francisco, CA 94103

Rich David  
Department of Human Resources  
1 South Van Ness Avenue, 4th Floor  
San Francisco, CA 94103

TO: The Honorable Civil Service Commission

FROM: Micki Callahan, Human Resources Director 

SUBJECT: **Salary Survey of Registered Nurse Classifications, 2010-2011**  
(Charter Section 48.403)

RECOMMENDATION: Adopt Staff Report; forward to Board of Supervisors

Charter Section 48.403 requires the Civil Service Commission to certify to the Board of Supervisors the highest collective bargaining salary schedule, at the maximum, for acute care nurses in the six Bay Area counties as of April 15th of each year. It also requires that the Board of Supervisors set a rate of pay for such nurses which does not exceed the schedule certified by the Civil Service Commission.

In addition, the Charter specifies that if the highest prevailing wage exceeds the current City and County rate, the Civil Service Commission may also certify the amount of the difference between the City and County and the employer used for certification, the maximum salary plus the dollar value of health service and vacation benefits. The Board of Supervisors may then provide additional salary, conditions and benefits of employment not to exceed this dollar value.

The City and SEIU Local 1021 are currently in the fourth year of an amended four-year collective bargaining agreement covering the City's registered nurses. The purpose of this certification is to demonstrate that the value of wages and benefits provided by that collective bargaining agreement conform to the limits provided by the Charter.

The Department of Human Resources is submitting to the Civil Service Commission for certification to the Board of Supervisors the following:

***I. Certification of the Highest Prevailing Salary Schedule***

The highest prevailing salary schedule, at maximum, in effect on April 15, 2010 for the acute care staff nurse classification granted by collective bargaining agreement is \$65.33 per hour. This was determined after conducting a survey of the following Bay Area hospitals and medical centers: Alameda County Medical Center, Alta Bates Summit Medical Center, California Pacific Medical Center, Children's Hospital and Research Center of Oakland, Chinese Hospital, Contra

Costa County Regional Medical Center, Kaiser, Marin General Hospital, San Mateo County Medical Center, Santa Clara Valley Medical Center, Seton Medical Center, Stanford Medical Center, UCSF Medical Center and Washington Hospital. The survey includes both public and private entities. Given the competitive nature of the labor market, maintaining the confidentiality of the private organizations is essential to insuring their future cooperation, and consistent with salary survey best practices. Therefore, the highest payer will not be indicated by name, because the medical center specifically provided this data on the condition of anonymity. It should be noted that the medical center with the highest prevailing salary schedule, at maximum, for a journey-level nurse rate is \$4.28 higher per hour than our current hourly rate of \$61.05. For the purpose of this report, the medical center with the highest prevailing salary schedule, at maximum, will be referred to as "Medical Center A."

Some pertinent facts regarding the wages and conditions of the survey:

1. The survey confirmed with Medical Center A that the classification duties, responsibilities and minimum qualifications of its nurses are comparable to those of the CCSF Registered Nurse classification. The survey matched the level that is considered the journey-level classification.
2. It should be noted that Medical Center A requires 31 years of service to reach the maximum wage rate. Registered nurses employed by the City and County of San Francisco previously required only 10.5 years to reach the maximum wage rate. Two additional tenure steps were added effective the close of business June 30, 2006, providing a new higher maximum at 21 years. At 21 years, Medical Center A is approximately \$1.14 higher per hour than our current hourly rate of \$61.05.

***II. Certification of the wage and benefit hourly difference between the City and County of San Francisco and the employer with the highest prevailing wage rate***

Since Medical Center A's Staff Nurse II rate of pay exceeds that of the City and County of San Francisco's Registered Nurse, the attached table is provided to establish the dollar difference of maximum salary plus the dollar value of health, vacation and applicable benefits, pursuant to Charter Section A8.403(f), between CCSF and Medical Center A's comparable journey-level nurse classification.

*A. Health Benefits*

1. The relevant collective bargaining agreements provide for basic health care for nurses and their dependents. Medical Center A pays \$537.25 to \$1520.41 per month per nurse and offers three health plans. The City and County pays from \$449.38 to \$1,851.74 per month per nurse, depending on which of the three health plans the nurse chooses. The City & County of San Francisco's maximum benefit of \$1,851.74 per month exceeds Medical Center A's maximum contribution of \$1520.41 by approximately \$1.91 per hour.
2. Medical Center A also provides a dental coverage plan for such nurses, spouses and/or dependents at a maximum contribution cost of \$130.25 per month. The maximum coverage for the City and County nurses costs \$116.55 per month. The maximum monthly contribution rate for the City and County is approximately \$0.08 per hour less than Medical Center A.

*B. Paid Time Off*

1. The Medical Center A collective bargaining agreement contains provisions for Paid Time Off (PTO). PTO is accrued at the rate of .1111 to .1764 hours off (depending on length of service) for each hour worked. PTO covers vacation, holiday, and sick pay, as well as other elective absences.

Medical Center A nurses accrue the following number of days off:

First Year	32 days off earned
Second through fourth year	37 days off earned
Fifth through ninth year	45 days off earned
Tenth and subsequent year	50 days off earned

The City and County of San Francisco's equivalent benefits (vacation, paid sick leave and holidays) are as follows:

First through fifth year	37 days off earned
More than fifth year through fifteenth year	42 days off earned
More than fifteenth year and subsequent year	47 days off earned

2. In addition, the City and County has a Longevity Leave provision of 1 to 6 days depending on length of service. The value of this benefit ranges from \$0.20 to \$1.41 per hour. Medical Center A does not offer this benefit.

*C. Longevity Premium*

Effective July 1, 2001 the longevity premium for the CCSF Registered Nurse was replaced by a retention bonus for those nurses hired prior to July 1, 2003, which provides an additional 1% of base hourly salary commencing at Year 5 for those on Step 6 or below and 2% of base hourly salary at Year 10 for those on Step 7 or below. Since this bonus is in lieu of a longevity premium, it is included in the analysis since Medical Center A's maximum rate at 31 years of service includes a longevity premium in the base wage.

*D. Summary of Wages and Benefits*

The total hourly dollar value of Medical Center A's Staff Nurse II for wages and benefits at the maximum rate of pay and 31 years of service exceeds the wage rate and like benefits for the City and County of San Francisco by \$2.56 per hour.

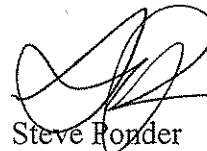
*E. Additional Notes*

Because no actuarial information was available from the private institutions surveyed, we are unable to note any information regarding retirement comparisons.

**III. Recommendations**

1. Adopt Staff Report; certify to the Board of Supervisors the Medical Center A Staff Nurse II rate of \$65.33 is the highest prevailing wage rate in effect on April 15, 2010.

Respectfully submitted,



Steve Ronder  
Classification and Compensation Manager

COMPARISON OF WAGES AND BENEFITS

Medical Center A's Staff Nurse II

and  
the City and County of San Francisco Registered Nurse  
as of April 15, 2010

Years of Service	Base Salary		Health Insurance (max)		Dental Insurance (max)		Paid Time Off*		Longevity Days Off		Retention Bonus**		Total Value Salary and Benefits		Total Hourly Difference CCSF over/ (under) Med Center A
	CCSF Hourly	MCA Hourly	CCSF Hourly	MCA Hourly	CCSF Hourly	MCA Hourly	CCSF # Days	MCA # Days	CCSF Hourly Value	MCA Hourly Value	CCSF % of Base Rate	MCA Hourly Value	CCSF	MCA	
0	\$46.48	\$46.75	\$10.68	\$10.68	\$0.67	\$0.75	37	32	\$6.61	\$5.75	0	\$0.00	\$64.44	\$62.02	\$2.41
0.5	\$47.95	\$49.09	\$10.68	\$10.68	\$0.67	\$0.75	37	32	\$6.82	\$6.04	0	\$0.00	\$66.12	\$64.85	\$1.47
1.5	\$49.44	\$49.09	\$10.68	\$10.68	\$0.67	\$0.75	37	37	\$7.04	\$6.99	0	\$0.00	\$67.83	\$65.60	\$2.23
2.5	\$50.85	\$51.55	\$10.68	\$10.68	\$0.67	\$0.75	37	37	\$7.24	\$7.34	1	\$0.20	\$69.64	\$68.41	\$1.23
3.5	\$52.43	\$54.12	\$10.68	\$10.68	\$0.67	\$0.75	37	40	\$7.46	\$7.70	1	\$0.20	\$71.44	\$71.34	\$0.09
4.5	\$54.05	\$57.45	\$10.68	\$10.68	\$0.67	\$0.75	37	45	\$7.69	\$8.63	1	\$0.20	\$74.05	\$74.21	(\$2.78)
5.5	\$54.05	\$57.45	\$10.68	\$10.68	\$0.67	\$0.75	42	45	\$8.73	\$9.94	2	\$0.42	\$76.91	\$76.91	(\$1.82)
6.5	\$55.71	\$58.31	\$10.68	\$10.68	\$0.67	\$0.75	42	45	\$9.00	\$9.94	4	\$0.86	\$76.92	\$76.92	\$0.01
7.5	\$55.71	\$58.31	\$10.68	\$10.68	\$0.67	\$0.75	42	45	\$9.00	\$10.09	4	\$0.86	\$76.92	\$77.92	(\$1.00)
8.5	\$55.71	\$58.31	\$10.68	\$10.68	\$0.67	\$0.75	42	45	\$9.00	\$10.09	4	\$0.86	\$76.92	\$77.92	(\$1.00)
9.5	\$57.45	\$59.49	\$10.68	\$10.68	\$0.67	\$0.75	42	45	\$9.28	\$11.21	6	\$1.33	\$79.41	\$79.04	\$0.37
10.5	\$57.45	\$59.49	\$10.68	\$10.68	\$0.67	\$0.75	42	45	\$9.28	\$11.44	6	\$1.33	\$79.41	\$80.45	(\$1.04)
11.5	\$57.45	\$59.49	\$10.68	\$10.68	\$0.67	\$0.75	42	45	\$9.28	\$11.44	6	\$1.33	\$79.41	\$80.45	(\$1.04)
12.5	\$57.45	\$59.49	\$10.68	\$10.68	\$0.67	\$0.75	42	45	\$9.28	\$11.44	6	\$1.33	\$79.41	\$80.45	(\$1.04)
13.5	\$57.45	\$59.49	\$10.68	\$10.68	\$0.67	\$0.75	42	45	\$9.28	\$11.44	6	\$1.33	\$79.41	\$80.45	(\$1.04)
14.5	\$57.45	\$59.49	\$10.68	\$10.68	\$0.67	\$0.75	42	45	\$9.28	\$11.44	6	\$1.33	\$79.41	\$80.45	(\$1.04)
15.5	\$59.25	\$60.97	\$10.68	\$10.68	\$0.67	\$0.75	47	50	\$10.71	\$11.72	6	\$1.37	\$82.68	\$82.21	\$0.47
16.5	\$59.25	\$60.97	\$10.68	\$10.68	\$0.67	\$0.75	47	50	\$10.71	\$11.72	6	\$1.37	\$82.68	\$82.21	\$0.47
17.5	\$59.25	\$60.97	\$10.68	\$10.68	\$0.67	\$0.75	47	50	\$10.71	\$11.72	6	\$1.37	\$82.68	\$82.21	\$0.47
18.5	\$59.25	\$60.97	\$10.68	\$10.68	\$0.67	\$0.75	47	50	\$10.71	\$11.72	6	\$1.37	\$82.68	\$82.21	\$0.47
19.5	\$59.25	\$60.97	\$10.68	\$10.68	\$0.67	\$0.75	47	50	\$10.71	\$11.72	6	\$1.37	\$82.68	\$82.21	\$0.47
20.5	\$61.05	\$62.19	\$10.68	\$10.68	\$0.67	\$0.75	47	50	\$11.04	\$11.96	6	\$1.41	\$84.85	\$83.67	\$1.18
21.5	\$61.05	\$62.19	\$10.68	\$10.68	\$0.67	\$0.75	47	50	\$11.04	\$11.96	6	\$1.41	\$84.85	\$83.67	\$1.18
22.5	\$61.05	\$62.19	\$10.68	\$10.68	\$0.67	\$0.75	47	50	\$11.04	\$11.96	6	\$1.41	\$84.85	\$83.67	\$1.18
23.5	\$61.05	\$62.19	\$10.68	\$10.68	\$0.67	\$0.75	47	50	\$11.04	\$11.96	6	\$1.41	\$84.85	\$83.67	\$1.18
24.5	\$61.05	\$62.19	\$10.68	\$10.68	\$0.67	\$0.75	47	50	\$11.04	\$11.96	6	\$1.41	\$84.85	\$83.67	\$1.18
25.5	\$61.05	\$63.43	\$10.68	\$10.68	\$0.67	\$0.75	47	50	\$11.04	\$12.20	6	\$1.41	\$84.85	\$85.15	(\$0.30)
26.5	\$61.05	\$63.43	\$10.68	\$10.68	\$0.67	\$0.75	47	50	\$11.04	\$12.20	6	\$1.41	\$84.85	\$85.15	(\$0.30)
27.5	\$61.05	\$63.43	\$10.68	\$10.68	\$0.67	\$0.75	47	50	\$11.04	\$12.20	6	\$1.41	\$84.85	\$85.15	(\$0.30)
28.5	\$61.05	\$63.43	\$10.68	\$10.68	\$0.67	\$0.75	47	50	\$11.04	\$12.20	6	\$1.41	\$84.85	\$85.15	(\$0.30)
29.5	\$61.05	\$63.43	\$10.68	\$10.68	\$0.67	\$0.75	47	50	\$11.04	\$12.20	6	\$1.41	\$84.85	\$85.15	(\$0.30)
30.5	\$61.05	\$63.43	\$10.68	\$10.68	\$0.67	\$0.75	47	50	\$11.04	\$12.20	6	\$1.41	\$84.85	\$85.15	(\$0.30)
31.5	\$61.05	\$65.33	\$10.68	\$10.68	\$0.67	\$0.75	47	50	\$11.04	\$12.56	6	\$1.41	\$84.85	\$87.41	(\$2.56)

\* Paid Time Off includes vacation, sick and holiday leave as well as other elective absences.

\*\* Please note effective 7/1/01 the longevity premium of an additional 1% on base hourly salary at Year 10 changed to a retention bonus of 1% of base hourly salary at Year 5 for those below Step 7 and 2% of base hourly salary at Year 10 for those below Step 8. This premium is not available for nurses hired on or after 7/1/03.





Rec'd  
BIS email  
4-20-10

# CITY AND COUNTY OF SAN FRANCISCO HUMAN RIGHTS COMMISSION

## S.F. ADMINISTRATIVE CODE CHAPTERS 12B and 14B WAIVER REQUEST FORM (HRC Form 201)

FOR HRC USE ONLY	
Request Number:	5859
APR 17 11 00 22 HUMAN RIGHTS COMMISSION	

### Section 1. Department Information

Department Head Signature: Bond on file for NPE  
 Name of Department: San Francisco Municipal Transportation Agency  
 Department Address: 1 South Van Ness, San Francisco, CA 94103  
 Contact Person: Paul Petersen  
 Phone Number: 923-6368 Fax Number: 923-6234

### Section 2. Contractor Information

Contractor Name: The Training Network Contact Person: Jeanne Culton  
 Contractor Address: 106 Capitola Dr, Durham, NC 27713  
 Vendor Number (if known): 27895 Contact Phone No.: 800-397-5215

### Section 3. Transaction Information

Date Waiver Request Submitted: 12/11/2009 Type of Contract: N/A  
 Contract Start Date: N/A 4-26-10 End Date: N/A 6-30-10 Dollar Amount of Contract: \$859.85

### Section 4. Administrative Code Chapter to be Waived (please check all that apply)

- Chapter 12B
- Chapter 14B *Note:* Employment and LBE subcontracting requirements may still be in force even when a 14B waiver (type A or B) is granted.

### Section 5. Waiver Type (Letter of Justification *must* be attached, see Check List on back of page.)

- A. Sole Source
- B. Emergency (pursuant to Administrative Code §6.60 or 21.15)
- C. Public Entity
- D. No Potential Contractors Comply – Copy of waiver request sent to Board of Supervisors on: 4-20-10 (TW)
- E. Government Bulk Purchasing Arrangement – Copy of waiver request sent to Board of Supervisors on:
- F. Sham/Shell Entity – Copy of waiver request sent to Board of Supervisors on:
- G. Local Business Enterprise (LBE) (for contracts in excess of \$5 million; see Admin. Code §14B.7.1.3)
- H. Subcontracting Goals

HRC ACTION	
12B Waiver Granted: <input checked="" type="checkbox"/>	14B Waiver Granted: _____
12B Waiver Denied: _____	14B Waiver Denied: _____
Reason for Action: <u>No compliant vendor provides unique transit operator safe driving training program.</u>	
HRC Staff: <u>Tamra Wickheta</u>	Date: <u>4-19-10</u>
HRC Staff: _____	Date: _____
HRC Director: _____	Date: _____

DEPARTMENT ACTION – This section must be completed and returned to HRC for waiver types D, E & F.	
Date Waiver Granted: _____	Contract Dollar Amount: _____

3

Gavin Newsom | Mayor  
Tom Nolan | Chairman  
Dr. James McCray Jr. | Vice-Chairman  
Cameron Beach | Director  
Shirley Breyer Black | Director  
Malcolm Heinicke | Director  
Jerry Lee | Director  
Bruce Oka | Director  
Nathaniel P. Ford Sr. | Executive Director/CEO

April 6, 2010

Tamra Winchester  
Human Rights Commission  
25 Van Ness Ave. Suite 800  
San Francisco, CA 94102

Dear Ms. Winchester,

The Transportation Training Section is seeking to purchase two training DVDs from the Training Network Company located in Durham, North Carolina to use in our transit operator training programs. The purpose of this purchase is to provide a dramatic presentation that illustrates the many unique situations professional drivers face including driving in unfamiliar areas, directions, signage, and maps. The videos stress safe driving techniques and provide practical advice for minimizing the risks of driving in a number of potentially dangerous situations including bad weather. We believe that presenting these videos to our operators will enable them to become better and safer drivers which will result in a lower accident rate for the Agency.

With respect to our Section's efforts to get the vendor to comply with Chapter 12B, I have recommended the Training Network become a "compliant vendor" and directed their representative to the HRC website on [sfgov.org](http://sfgov.org). He wrote back that he would look into it but to date I don't believe he has submitted an application.

The Training Network is truly a sole source for these products as they produce their own videos and also sell products from over 25 leading producers which provide the widest range of training video choices available anywhere.

Please consider granting a sole source waiver so that we may use this valuable method of instruction. Thank you for your consideration in this matter.

Sincerely,



Paul Petersen  
Superintendent  
Transportation Training  
2640 Geary Boulevard  
San Francisco, CA 94118  
Office: (415) 923-6368 Fax: (415) 923-6368  
E-mail: [paul.petersen@sfmta.com](mailto:paul.petersen@sfmta.com)

San Francisco Municipal Transportation Agency  
Transportation Training Section  
2640 Geary Blvd. San Francisco, CA 94118 | Tel: 415.923.6279 | Fax: 415.923.6009

The  
NATIONAL HUMANE  
EDUCATION SOCIETY

Fostering a sentiment of kindness to animals



RECEIVED  
BOARD OF SUPERVISORS  
SAN FRANCISCO

2010 APR 19 PM 3:51

BY AK

April 16, 2010

San Francisco Board of Supervisors  
1 Dr. Carlton B. Goodlett Place  
San Francisco, CA 94102-4689

Dear Board of Supervisors,

I am writing on behalf of The National Humane Education Society (NHES) and its nearly 400,000 members nationwide, many of whom are California residents, to thank you for passing a resolution urging the citizens of San Francisco to eat vegetarian on Mondays.

As a nonprofit organization that promotes the humane treatment of all animals, NHES supports a vegetarian diet for both humane and health reasons. By choosing a vegetarian diet, we spare animals the cruelty of factory farming and we use less water and fossil fuels to produce food. We humans and the planet gain immeasurably when we eat vegetarian.

Again, we thank you for your positive message on eating a healthy vegetarian diet! We wish you and other San Franciscans good health and humane eating. NHES will continue to work for animal welfare and responsible and humane communities nationwide.

For the Animals,

Ginnie R. Maurer  
Humane Education Assistant

NATIONAL OFFICE:  
P.O. Box 340  
CHARLES TOWN, WV 25414-0340  
PHONE 304/725-0506  
FAX 304/725-1523  
www.nhes.org

PROGRAM:  
SPAY TODAY  
P.O. Box 340  
CHARLES TOWN, WV 25414-0340  
Phone 304/728-8332  
FAX 304/724-6765  
www.baacs.org

AFFILIATE:  
PEACE PLANTATION  
ANIMAL SANCTUARY  
12752 STATE HWY. 206  
WALTON, NY 13856-2327  
PHONE 607/865-5759  
FAX 607/865-6334  
www.ppasny.org

PROGRAM:  
BRIGGS ANIMAL  
ADOPTION CENTER  
P.O. BOX 1023  
CHARLES TOWN, WV 25414-1023  
PHONE 304/724-6558  
FAX 304/724-6765  
www.baacs.org

4



BOS II, COB  
C Page

## MEMORANDUM

April 7, 2010

**TO:** MEMBERS, PORT COMMISSION  
Hon. Rodney Fong, President  
Hon. Stephanie Shakofsky, Vice President  
Hon. Kimberly Brandon  
Hon. Michael Hardeman  
Hon. Ann Lazarus

**FROM:** Monique Moyer  
Executive Director

**SUBJECT:** Accept Third Quarter Contracting Activity Report - Fiscal Year 2009/10 for the January 1, 2010 to March 31, 2010 Reporting Period

**DIRECTOR'S RECOMMENDATION:** Informational Item – No Action Required

### INTRODUCTION

The purpose of this report is to provide regular reporting of the Port's contracting activities as legally required by the City and County of San Francisco through its Administrative Code or based upon policies and practices adopted by the San Francisco Port Commission. Background information on these requirements is provided at the end of this report as Exhibit 1.

### SUMMARY

This report includes the following four (4) key elements: 1) Third Quarter Fiscal Year 2009/10 Highlights; 2) Third Quarter Fiscal Year 2009/10 detailed contracting activities; 3) Projected upcoming contracting activities and 4) Local 21 Staffing Changes. Exhibits include: Exhibit 1: Background information on the purpose of this report and Exhibit 2: Year to date contracting activity and Close-out of Expired As-needed contracts.

#### I. Highlights:

##### Status of Ordinance Amendments Pertaining to Contracting

During the last reporting period, it was reported that the Board of Supervisors was considering ordinance amendments that would impact the Port's contracting activities.

This Print Covers Calendar Item No. **7B**

5

RECEIVED  
BOARD OF SUPERVISORS  
SAN FRANCISCO  
2010 APR 22 PM 3:19  
BY

On February 10, 2010, Mayor Gavin Newsom signed those amendments into law. The Ordinance Amendments are summarized as follows:

Ordinance No. 17-10: Amended Administrative Code Section 21.5 to allow the City Purchaser to permit informal solicitations for contracts for commodities and services up to \$100,000 and for those contracts utilizing federal grant funds where authorized and to update the Purchaser's authority to set aside contracts for local small businesses.

Ordinance No. 18-10: Amended Administrative Code Chapter 14B, Local Business and Non-Discrimination in Contracting Ordinance, to add a new Section 14B.19 establishing uniform procedures to attain project LBE goals for design-build and integrated project delivery contracts.

Ordinance No. 19-10: Amended Administrative Code Chapter 6, Public Works Contracting Policies and Procedure, Section 6.1, to clean up language and otherwise modify various requirements such as: 1) increase the dollar threshold for sealed competitively bid construction contracts from \$100,000 to \$400,000, with a future increase by the Controller in 2015; 2) increase the minimum competitive amount for the procurement of professional services for public works projects from \$25,000 to \$100,000; 3) increasing the applicable maximum contracts amounts and contract term; and 4) increasing the maximum contract service order amounts from \$200,000 to \$400,000.

Ordinance No. 20-10: Amended Administrative Code Chapter 14B to establish various changes which include: expanding the Micro-LBE Set Aside Program; allows Job Order Contracts Set-Aside credit for the Department of Public Works; requires quarterly reporting on contracts set-aside for the Micro-LBE Set Aside Program; creates a SBA-LBE category which basically expands LBE participation to include firms having graduated from the LBE program or otherwise ineligible due to size in annual gross receipts; reduces some of the bureaucratic red-tape in contracting by eliminating the good faith effort documentation when firms achieve LBE subcontracting participation in excess of 35%.

As reported last quarter, some changes were pending for this particular ordinance. The change of significance relates to the threshold for bid discounts applicable to Small, Micro-LBE and SBA-LBEs. Previously, it was reported that a 2% bid preference would apply to contracts between \$5 million and \$20 million. However, prior to the Mayor signing off on the ordinance amendment, this amendment was revised to reflect an applicable contracting range between \$400,000 and \$20 million. This is significant to the Port because most of the Port's projects fall within the lower contracting threshold.

On March 25, 2010, the San Francisco Human Rights Commission officially approved Rules and Regulations for implementing the above legislative changes. Larger awarding departments were sent copies of the new rules and regulations.

#### Proposed New Ordinance Amendment

In March 2010, Supervisor Sophie Maxwell introduced an ordinance that would grant bid discounts to Small and Micro-LBEs that joint venture with other firms to bid on

construction contracts. This proposal is consistent with past legislative and regulatory requirements implemented by the San Francisco Human Rights Commission (HRC) and is currently being reviewed by awarding departments.

In addition to the above highlights, there are several administrative initiatives to streamline the contracting process on a citywide basis. It is Port staff's intent to bring back contracting policy recommendations at a later date to reflect the various contracting ordinance, rules and regulatory changes that are being adopted citywide.

Quarterly Contracting Results

Total contracting activity for the 3rd Quarter of Fiscal Year 2009/10 is as follows:

Type of Transaction	Number of Transactions	Total Dollar Amount	LBE Dollar Amount (sub)	LBE %
As-needed CSOs	8	\$272,534	\$39,540	14.5%
Construction	1	2,242	0	0%
Professional Services	1	65,036	5,208	8.01%
General Services (IT)	1	99,600	0	0%
<b>TOTAL</b>	<b>11</b>	<b>\$439,412</b>	<b>\$44,748</b>	<b>10.18%</b>
<i>LBE Exempt Contracts*</i>	<i>1</i>	<i>\$ 96,989</i>		<i>0%</i>

\*The Port's Youth Employment Program Contract did not include certified LBE participation goals. However, the contract awarded to the San Francisco Conservation Corps does include 20% subcontractor participation with Larkin Street Youth Services which is a San Francisco based non-profit organization. This subcontract was implemented to assure adequate services to young people between the age of 16 and 18 in economically disadvantaged San Francisco communities.

**Cumulatively, the Port's utilization of Local Business Enterprises (LBEs) on its contracts still exceeds the 20% subcontracting goal at 23.92% (Exhibit 2; Year-to-date Contracting Activity).** However, as indicated in the table above, the Port did not meet its 20% LBE subcontracting goal for this reporting period at 10.18% LBE participation. As reported in the past, utilization of LBEs on Port contracts varies from one reporting period to another, depending upon the required type of work. The marine aspect of some Port work is less desirable or otherwise precludes many LBEs from participating on Port contracts. This quarter's lower percentage of LBE subcontracting participation is also due in part to the following:

- 1) Smaller dollar value of contracting transactions and overall less contracted work;
- 2) Most of the work that could be performed by local businesses is now being performed by other city departments and primarily the Department of Public Works. (The Port estimates that \$37,789,000 in work will be work ordered to various city departments over the next two years, as well as this fiscal year.);
- 3) Amendments to existing contracts comprise most of the contract work; and
- 4) Information Technology (IT) contracts are processed through the Computer Store for Information Technology (COIT) group and therefore LBE participation reporting is difficult to retrieve.

## II. Contracting Detail:

The Port of San Francisco did not meet the 20% Local Business Enterprise (LBE) subcontracting participation goal for this quarter with participation at 10.18%. Further details of the contracts awarded are as follows:

Contract/Project	Awarded To:	Awarded Amt.	LBE Amt.	LBE%
<b>As-Needed CSOs</b>				
Archaeological Support for Hyde St. Fuel Dock	Creegan+D'Angelo/ F.E. Jordan	\$47,466.79	\$11,161.20	23.51%
Inspection & Testing Services of Signal & Train Control Sys.	Creegan+D'Angelo/ F.E. Jordan	\$45,000.00	\$0.00	0.00%
Cal Train/HSR OCS Peer Review	Creegan+D'Angelo/ F.E. Jordan	\$19,650.00	\$0.00	0.00%
Pier 27 Shoreside Power Est.	Creegan+D'Angelo/ F.E. Jordan	\$2,791.36	\$2,512.00	89.99%
On Call Scoping, Technical Advice	URS/AGS JV	\$25,000.00	\$0.00	0.00%
Closed Circuit TV System (CCTV)-Phase 2	URS/AGS JV	\$119,130.00	\$19,147.00	16.07%
UST Soil/Groundwater Investigation	Weiss Associates	\$5,388.00	\$0.00	0.00%
Pier 90 Roof Repair Estimate	W&K/SDE JV	\$8,108.00	\$6,720.00	82.88%
<b>Construction Service Contracts</b>				
ADA Accessibility Upgrades	Gold Spring Construction	\$2,242.00	\$0.00	0.00%
<b>Professional Services</b>				
Brannan Street Wharf	W&K/Structus JV	\$65,036.00	\$5,208.00	8.01%
<b>General Service Contracts</b>				
Prof. Service for Senior Principle Level Oracle App.	Xtech	\$99,600.00	\$0.00	0.00%
<b>TOTAL</b>		<b>\$439,412.15</b>	<b>\$44,748.00</b>	<b>10.18%</b>
<b>LBE Exempt Contracts</b>				
Employment Training Program	San Francisco Conservation Corps	\$96,989.00	\$0.00	0.00%

While the Port did not meet the 20% LBE subcontracting goal for this reporting period, cumulatively (based upon year to date statistics), the Port is still exceeding the overall 20% LBE subcontracting goal at 23.92%. Out of \$3,937,271 in contract dollars awarded to date, \$941,966 has been awarded to local business enterprises.

\$200,000 As-Needed Contracting Authorization

During this reporting period, no Contract Service Order exceeded the \$200,000 project dollar threshold amount.

**III. Projected Contracting Activities for the Upcoming Year:**

<b>As-Needed Contracts (CSOs)</b>	<b>Description of Work</b>	<b>Port Project</b>	<b>Est. Dollar Value of Work</b>
Engineering	Engineering Conceptual Design Services	Pier 19 Maritime Emergency Response Center	\$200,000
Engineering	Engineering support (modification)	Maritime Structural Project 2	\$47,500
Environmental	Technical Support	Wharf J-10	TBD
Planning and Development	Transportation Planning	Jefferson Street Improvements	\$5,000
Planning and Development	Signage Graphics	Blue Greenway	\$45,000
Planning and Development	Stabilization study and cost estimate	Pier 70 Building 113 Stabilization	\$103,000
Planning and Development	Professional Service	Environmental Education Progress at Heron's Head Park	TBD

<b>Formal Professional Services</b>	<b>Description of Work</b>	<b>Port Project</b>	<b>Est. Dollar Value of Work</b>
Development of the Pier 70 Site	Hazardous Building Materials Survey and Related Environmental Services	Pier 70 Development	\$700,000
As-Needed Consulting and Related Services Contracts	Environmental Services (Three separate contracts each at \$1 million each)	Port-wide	\$3,000,000



<b>Construction Services</b>	<b>Description of Work</b>	<b>Port Project</b>	<b>Est. Dollar Value of Work</b>
Pedestrian Trail Design	Pedestrian Trail Optimization, Cost Est.	Mission Bay Shore Protection	\$5,961
Roofing	Bulkhead and shed	Pier 19	\$2,000,000
Marine Structural	Various structural repairs	Hyde St. Harbor & Jefferson Streets	\$1,900,000
Shoreline Improvements & Protection	Demolish portions and restore shoreline	Mission Bay/Bayfront Park (GO Bond Project)	\$2,063,000
Public Promenade	Seawall and pier repairs	Pier 43	\$6,000,000
Wharf Development	Brannan Street Wharf	Piers 34/36	\$23,800,000
Pre-development	Site grading and paving of roadway	Piers 90-94 Backlands	\$6,800,000
Substructure Deck Repair	Seismic strengthen and repair of concrete deck	Pier 50 Valley	TBD

<b>General Services</b>	<b>Description of Work</b>	<b>Port Project</b>	<b>Est. Dollar Value of Work</b>
Information Technology	Integrated Security System	Port-wide	\$2,700,000
Security Services	Unarmed Guards	Port-wide	\$250,000 annually
Information Technology	Computerized Maintenance Management System	Port-wide	\$900,000 (total budget)
Information Technology	Upgrade of PROPworks system	Port-wide	\$200,000
Janitorial Service	Janitorial and Window Washing Service	Port-Wide	TBD

#### IV. Local 21 Staffing Activity Changes for Fiscal Year 2009/10 – 3rd Quarter:

Staffing Activity for Fiscal Year 2009/10  
3rd Quarter, 1/1/10 – 3/31/10

<b>Class/Title</b>	<b>Activities</b>
<b>Hires</b>	
5382 Student Design Trainee III	As-Needed: Effective start date 3/09/10
9395 Property Manager, Port	New Hire: Effective start date 3/08/10

<b>Separations</b>	
9386 Sr. Property Manager, Port	Employee resigned effective 1/23/10
1652 Accountant II	Employee on Leave of Absence to Provisional 1654 at SFPUC effective 10/05/09
<b>Vacancies</b>	
1824 Principal Administrative Analyst	Vacancy due to retirement of employee
5382 Student Design Trainee III	Three (3) As-Needed positions for various Port divisions

**RECOMMENDATION**

The attached report is submitted to meet the requirements stated in the report Background. Port Staff requests the Port Commission's acceptance of this report.

Prepared by: Norma Nelson, Contract Administrator/Manager

For: John Woo, Interim Deputy Director  
Finance & Administration

cc: Clerk, Board of Supervisors  
Local 21, IFPTE Representative Ging Louie  
Department of Public Works, Peg Divine/Patrick Rivera  
Human Rights Commission, Theresa Sparks

Exhibit 1: Report Background  
Exhibit 2: Year to-date Contracting Activity Report

## EXHIBIT 1

### BACKGROUND

The purpose of this report is to comply with legal and policy mandates for the City and County of San Francisco and Port Commission. These legal and policy requirements are primarily based upon the following:

1. "As-Needed" contracting requirements as promulgated by Section 6.64 of the San Francisco Administrative Code, Port Commission Resolution 03-50 and a Letter of Agreement with Local 21 International Federation of Professional and Technical Employees Association (IFPTE). (Effective February 10, 2010, a \$400,000 ( instead of previous \$200,000) limit was imposed via City ordinance No. 20-10 for use of as-needed contract services per each single public works project; not including general planning or non-construction related professional services such as real estate economics as-needed contracts.)
2. Local 21 Union for the IFPTE and the City and County of San Francisco Department of Public Works requested that the Port include the following additional information in the subject quarterly reports, as it applies to the use of as-needed professional service contracts:
  - Contracting activity for the current reporting period;
  - Anticipated contracting activity for the upcoming quarter; and
  - Estimated staffing numbers and projects related to the as-needed contract services.
3. San Francisco Administrative Code Section 14(b) requires all departments and contract awarding authorities to report to the Mayor on their progress in the preceding fiscal year toward the achievement of the LBE goals and their steps to ensure non-discrimination against MBEs (Minority Business Enterprises), WBEs (Women Business Enterprises) and OBEs (Local businesses other than MBE or WBE). In addition, effective February 10, 2010, each awarding department must set-aside 25% of its non-construction contracts under \$100,000 and 50% of its construction contracts under \$400,000 for Micro-LBE contracting. Quarterly reporting to the Board of Supervisors is required for year 2010 and annually thereafter.

The Port of San Francisco has been assigned by the San Francisco Human Rights Commission (HRC) an overall Local Business Enterprise (LBE) subcontracting participation goal of 20%. This means that 20% of all of the contracted work procured by the Port of San Francisco must be awarded to Local Business Enterprises or the contractor must have demonstrated a good faith effort to do so.

In the award of leases, franchises, concessions, and other contracts not subject to the discount provisions of Administrative Code Section 14(b), contract awarding authorities such as the Port shall utilize the good faith effort steps to maximize opportunities for LBE participation, as deemed practicable to do so.

At the minimum, contract awarding authorities should notify LBEs that are certified to perform the work contemplated in a contract and solicit their interest in the contract. These good faith effort steps are described in each solicitation for a Port lease, franchise, concession and other contracts such as development agreements.

4. San Francisco Administrative Code Section 12B requires that all contracting agencies of the City, or any department thereof, acting for or on behalf of the City and County shall include in all contracts and property contracts executed or amended in any manner or as to any portion thereof, a provision obligating the contractor not to discriminate on the basis of the fact or perception of a person's race, color, creed, religion, national origin, ancestry, age, sex, sexual orientation, gender identity, domestic partner status, marital status, disability or Acquired Immune Deficiency Syndrome, HIV status (AIDS/HIV status), weight, height, association with members of classes protected under this chapter or in retaliation for opposition to any practices forbidden under this chapter against any employee of, any City employee work with, or applicant for employment with such contractor and shall require such contractor to include a similar provision in all subcontracts executed or amended thereunder.

#### Definitions

1. *As-needed Professional Service Contracts* include professional service contracts procured on a request for qualifications basis to establish a pool of Master Agreements in which work is contracted under task orders or Contract Service Orders (CSOs), as needed to complete work required on an immediate basis that cannot otherwise be performed by existing City and County of San Francisco staff.
2. *Professional Service Contracts* procured through a *formal* contracting process - contracts valued greater than \$29,000; changed to \$100,000 effective February 10, 2010
3. *Professional Service Contracts* procured through an *informal* contracting process - contracts valued at less than \$29,000; changed to \$100,000 effective February 10, 2010.
4. *Construction Service Contracts*  
- public works/construction contract means a contract for the erection, construction, renovation, alteration, improvement, demolition, excavation, installation, or repair of any public building, structure, infrastructure, bridge, road, street, park, dam, tunnel, utility or similar public facility that is performed by or for the City. (Effective February 10, 2010, informal contracting threshold increased from \$100,000 to \$400,000. Formally bid contracts have an engineering cost estimate that exceed \$400,000)

5. *Information Technology Contracts*  
- acquisition of computer hardware, software, peripherals and appropriate network, consulting, maintenance, training and support services, as well as any successor contracts.
6. *General Services Contracts*  
- an agreement for those services that are not professional services. Examples of "general services" include: janitorial, security guard, pest control, parking lot attendants and landscaping services.

#### Other Contracting Activity

In addition to the above contracting activities, the Port has engaged in a number of development agreements, leasing evaluations, renewals, and new leases.

#### Steps to Assure Non-Discrimination against MBEs, WBEs and OBEs

To assure that MBEs, WBEs and OBEs are not discriminated against in Port contracting opportunities, the Port has implemented the following standard procedures:

- Request information from the San Francisco Human Rights Commission as to the availability of MBEs, WBEs and OBEs certified as offering services required on Port projects. Such information includes availability statistics in percentages for MBEs, WBEs and OBEs. In addition, the Port has requested the MS Excel database of such certified firms to assure inclusion as project opportunities become available.
- Availability statistics in percentages are included in advertising for all formally procured contracts.
- Outreach through Minority, Women and Local media
- Direct mailing, faxing and e-mailing of procurement opportunity notices
- Identifying set-aside opportunities exclusively for Micro-LBE firms
- Working with Port staff to eliminate barriers to MBEs, WBEs and OBEs gaining access to Port contracting opportunities. Such barriers include qualifications based upon prior knowledge/experience on the project or past work with existing consultants.
- Hold prime consultants accountable for actions that impede the success of MBE, WBE and OBE firm's success on contracts such as the withholding of essential information required to perform subcontracted work by notifying the San Francisco Human Rights Commission to perform investigations, when deemed appropriate.

#### Steps to Assure Non-Discrimination in employment for all contracts.

Pursuant to the 12B Ordinance, the San Francisco Human Rights Commission has promulgated rules and regulations for the implementation of the nondiscrimination provisions of 12B. The various forms required as conditions of being awarded a goods/services/public works contract, development agreement, lease or concession are included in all advertisements for such contracts and incorporated into the finalized contract documents. The San Francisco Human Rights Commission actively participates in the selection process to assure compliance with these requirements and conducts investigations as deemed necessary to assure such compliance.

**Total Summary of Newer As-Needed Professional Service Contracts**

As-Needed Contracts	FY 2009-10 1st Quarter			FY 2009-10 2nd Quarter			FY 2009-10 3rd Quarter			FY 2009/2010 Cumulative to Date		
	CSO Amt	DBE Amt	DBE %	CSO Amt	DBE Amt	DBE %	CSO Amt	DBE Amt	DBE %	CSO Amt	DBE Amt	DBE %
<b>Older Contracts-Consultants</b>												
Architectural & Engineering												
Creegan & D'Angelo	\$24,995	\$0	0.00%							\$24,995	\$0	0.00%
TEFWinzler Kelly JV				\$40,844	\$37,403	91.58%				\$40,844	\$37,403	91.58%
<b>Total A&amp;E Services</b>	<b>\$24,995</b>	<b>\$0</b>	<b>0.00%</b>	<b>\$40,844</b>	<b>\$37,403</b>	<b>91.58%</b>	<b>\$0</b>	<b>\$0</b>	<b>0.00%</b>	<b>\$65,839</b>	<b>\$37,403</b>	<b>56.81%</b>
<b>Environmental</b>												
Treadwell/HydroC JV	\$6,000	\$0	0.00%				\$5,388	\$0	0.00%	\$6,000	\$0	0.00%
Weiss Associates	\$14,619	\$12,914	88.34%							\$20,007	\$12,914	64.55%
URS/Avila JV										\$0	\$0	0.00%
<b>Total Environmental Services</b>	<b>\$20,619</b>	<b>\$12,914</b>	<b>62.63%</b>	<b>\$0</b>	<b>\$0</b>	<b>0.00%</b>	<b>\$5,388</b>	<b>\$0</b>	<b>0.00%</b>	<b>\$26,007</b>	<b>\$12,914</b>	<b>49.66%</b>
<b>TOTAL CONSTRUCTION-RELATED</b>	<b>\$45,614</b>	<b>\$12,914</b>	<b>28.31%</b>	<b>\$40,844</b>	<b>\$37,403</b>	<b>91.58%</b>	<b>\$5,388</b>	<b>\$0</b>	<b>0.00%</b>	<b>\$91,846</b>	<b>\$50,317</b>	<b>54.78%</b>
<b>Real Estate</b>												
Bay Area Economics	\$107,304	\$102,094	95.14%							\$107,304	\$102,094	95.14%
CBRE Consulting										\$0	\$0	0.00%
Economic Planning Sys.										\$0	\$0	0.00%
Keyser Marston Assoc.										\$0	\$0	0.00%
<b>Total Real Estate Services</b>	<b>\$107,304</b>	<b>\$102,094</b>	<b>95.14%</b>	<b>\$0</b>	<b>\$0</b>	<b>0.00%</b>	<b>\$0</b>	<b>\$0</b>	<b>0.00%</b>	<b>\$107,304</b>	<b>\$102,094</b>	<b>95.14%</b>
<b>Construction Support Services</b>												
BD/IECS JV										\$0	\$0	0.00%
MCC2 JV										\$0	\$0	0.00%
<b>Total Construction Support</b>	<b>\$0</b>	<b>\$0</b>	<b>0.00%</b>	<b>\$0</b>	<b>\$0</b>	<b>0.00%</b>	<b>\$0</b>	<b>\$0</b>	<b>0.00%</b>	<b>\$0</b>	<b>\$0</b>	<b>0.00%</b>
<b>TOTAL</b>	<b>\$152,918</b>	<b>\$115,008</b>	<b>75.21%</b>	<b>\$40,844</b>	<b>\$37,403</b>	<b>91.58%</b>	<b>\$5,388</b>	<b>\$0</b>	<b>0.00%</b>	<b>\$199,150</b>	<b>\$152,411</b>	<b>76.53%</b>

**Total Summary of Newer As-Needed Professional Service Contracts**

As-Needed Contracts	FY 2009-10 1st Quarter			FY 2009-10 2nd Quarter			FY 2009-10 3rd Quarter			FY 2009/2010 Cumulative to Date		
	CSO Amt	LBE Amt	LBE %	CSO Amt	LBE Amt	LBE %	CSO Amt	LBE Amt	LBE %	CSO Amt	LBE Amt	LBE %
<b>Newer Contracts-Consultants</b>												
Engineering & Related Services												
Creegan + D'Angelo/F. E. Jordan				\$54,525	\$6,332	11.61%	\$114,908	\$13,673	11.90%	\$169,433	\$20,005	11.81%
Winzler & Kelly/SDE JV				\$289,295	\$65,266	22.56%	\$8,108	\$6,720	82.88%	\$297,403	\$71,986	24.20%
URS/AGS JV				\$15,393	\$5,250	34.11%	\$144,130	\$19,147	13.28%	\$169,523	\$24,397	15.29%
<b>TOTAL Engineering &amp; Related</b>	<b>\$0</b>	<b>\$0</b>	<b>#DIV/0!</b>	<b>\$359,213</b>	<b>\$76,848</b>	<b>21.39%</b>	<b>\$267,146</b>	<b>\$39,540</b>	<b>14.80%</b>	<b>\$626,359</b>	<b>\$116,388</b>	<b>18.58%</b>

**Total Summary of Non As-Needed Contracts**

NOT As-Needed Contracts	FY 2009-10 1st Quarter			FY 2009-10 2nd Quarter			FY 2009-10 3rd Quarter			FY 2009/2010 Cumulative to Date		
	CSO Amt	LBE Amt	LBE %	CSO Amt	LBE Amt	LBE %	CSO Amt	LBE Amt	LBE %	CSO Amt	LBE Amt	LBE %
<b>Construction</b>												
Ascend Elevator	\$2,600	\$0	0.00%							\$2,600	\$0	0.00%
Security Electric	\$14,331	\$0	0.00%							\$14,331	\$0	0.00%
Gold Spring Construction				\$299,948	\$69,341	23.12%	\$2,242	\$0	0.00%	\$302,190	\$69,341	22.96%
A&B Construction				\$1,394,400	\$363,000	26.03%				\$1,394,400	\$363,000	26.03%
<b>Total Construction</b>	<b>\$16,931</b>	<b>\$0</b>	<b>0.00%</b>	<b>\$1,694,348</b>	<b>\$432,341</b>	<b>25.52%</b>	<b>\$2,242</b>	<b>\$0</b>	<b>0.00%</b>	<b>\$1,713,521</b>	<b>\$432,341</b>	<b>25.23%</b>
<b>Professional Services</b>												
Forell/Eisesser Engineering Inc.				\$209,945	\$42,619	20.30%				\$209,945	\$42,619	20.30%
Gerwick/SDE JV				\$728,300	\$193,000	26.50%				\$728,300	\$193,000	26.50%
Winzler&Kelly/Structus JV							\$65,036	\$5,208	8.01%	\$65,036	\$5,208	8.01%
<b>Total Professional Services</b>	<b>\$0</b>	<b>\$0</b>	<b>0.00%</b>	<b>\$938,245</b>	<b>\$235,618</b>	<b>25.11%</b>	<b>\$65,036</b>	<b>\$5,208</b>	<b>8.01%</b>	<b>\$1,003,281</b>	<b>\$240,826</b>	<b>24.00%</b>
<b>General Services</b>												
Xtech				\$295,360	\$0	0.00%	\$99,600	\$0	0.00%	\$394,960	\$0	0.00%
<b>Total General Services</b>	<b>\$0</b>	<b>\$0</b>	<b>0.00%</b>	<b>\$295,360</b>	<b>\$0</b>	<b>0.00%</b>	<b>\$99,600</b>	<b>\$0</b>	<b>0.00%</b>	<b>\$394,960</b>	<b>\$0</b>	<b>0.00%</b>
<b>TOTAL Not As-Needed Contracts</b>	<b>\$16,931</b>	<b>\$0</b>	<b>0.00%</b>	<b>\$2,927,953</b>	<b>\$667,959</b>	<b>22.81%</b>	<b>\$166,878</b>	<b>\$5,208</b>	<b>3.12%</b>	<b>\$3,111,762</b>	<b>\$673,167</b>	<b>21.63%</b>





Gavin Newsom, Mayor

Department of Human Services  
Department of Aging and Adult Services

Trent Rhorer, Executive Director

MEMORANDUM

April 23, 2010

TO: Angela Calvillo, Clerk of the San Francisco Board of Supervisors  
Ben Rosenfield, Controller of the City and County of San Francisco

THROUGH: Human Services Commission

FROM: Trent Rhorer, Executive Director  
Phil Arnold, Deputy Director for Administration

SUBJECT: **Human Services Care Fund: FY09-10 3<sup>rd</sup> Quarter Update**

RECEIVED  
BOARD OF SUPERVISORS  
SAN FRANCISCO  
2010 APR 23 PM 4:21

BY AK

This memo is intended to notify the Board of Supervisors and the Office of the Controller that pursuant to Administrative Code Sections 10.100-7(e), the Human Services Commission has approved the Human Services Agency's revised FY09-10 savings projections for the Human Services Care Fund.

**The FY09-10 savings in homeless CAAP aid payments resulting from the implementation of *Care Not Cash* is now projected at \$13,697,217, which is roughly four thousand more than previously estimated. The projected savings are roughly thirty-one thousand dollars more than the budgeted amount for FY09-10.**

*(memo continued on next page)*

6



The actual CAAP homeless caseload for the third quarter was used to update the projections for the remainder of FY09-10 (shown in the table below). Current projections estimate that Care Fund savings will be around four thousand more than was previously projected for FY09-10 (due to a modestly lower than expected homeless CAAP caseload during the quarter).

Month	Previous Quarterly Update (Q2 FY09-10)	Current Quarterly Update (Q3 FY09-10)	Difference
Jul-09	\$1,140,115	\$1,140,115	\$0
Aug-09	\$1,142,228	\$1,142,228	\$0
Sep-09	\$1,139,010	\$1,139,010	\$0
Oct-09	\$1,140,060	\$1,140,060	\$0
Nov-09	\$1,142,350	\$1,142,350	\$0
Dec-09	\$1,144,782	\$1,144,782	\$0
Jan-10	\$1,140,683	\$1,140,683	\$0
Feb-10	\$1,140,705	\$1,143,563	\$2,858
Mar-10	\$1,140,727	\$1,141,076	\$349
Apr-10	\$1,140,748	\$1,141,097	\$348
May-10	\$1,140,770	\$1,141,117	\$347
Jun-10	\$1,140,792	\$1,141,138	\$346
<b>Total FY09-10</b>	<b>\$13,692,969</b>	<b>\$13,697,217</b>	<b>\$4,248</b>

NOTE: Shaded figures are actuals (versus projections).

The FY09-10 budgeted amount for the Human Services Care Fund is \$13,666,382. As shown below, current projections are roughly thirty-one thousand more than this budgeted amount.

**FY09-10 Human Services Care Fund  
Budget Comparison**

FY09-10 Budget	\$13,666,382
Current Projections	\$13,697,217
Amount Under-Funded	\$30,835

City and County of San Francisco

BOS-11, cpage  
Human Services Agency

Department of Human Services  
Department of Aging and Adult Services

Trent Rhorer, Executive Director



Gavin Newsom, Mayor

MEMORANDUM

April 23, 2010

TO: Angela Calvillo, Clerk of the San Francisco Board of Supervisors  
Ben Rosenfield, Controller of the City and County of San Francisco

THROUGH: Human Services Commission

FROM: Trent Rhorer, Executive Director  
Phil Arnold, Deputy Director for Administration

SUBJECT: **Human Services Care Fund: FY09-10 3<sup>rd</sup> Quarter Update**

BY AK

2010 APR 23 PM 4: 21

RECEIVED  
BOARD OF SUPERVISORS  
SAN FRANCISCO

This memo is intended to notify the Board of Supervisors and the Office of the Controller that pursuant to Administrative Code Sections 10.100-7(e), the Human Services Commission has approved the Human Services Agency's revised FY09-10 savings projections for the Human Services Care Fund.

**The FY09-10 savings in homeless CAAP aid payments resulting from the implementation of *Care Not Cash* is now projected at \$13,697,217, which is roughly four thousand more than previously estimated. The projected savings are roughly thirty-one thousand dollars more than the budgeted amount for FY09-10.**

*(memo continued on next page)*

6

The actual CAAP homeless caseload for the third quarter was used to update the projections for the remainder of FY09-10 (shown in the table below). Current projections estimate that Care Fund savings will be around four thousand more than was previously projected for FY09-10 (due to a modestly lower than expected homeless CAAP caseload during the quarter).

Month	Previous Quarterly Update (Q2 FY09-10)	Current Quarterly Update (Q3 FY09-10)	Difference
Jul-09	\$1,140,115	\$1,140,115	\$0
Aug-09	\$1,142,228	\$1,142,228	\$0
Sep-09	\$1,139,010	\$1,139,010	\$0
Oct-09	\$1,140,060	\$1,140,060	\$0
Nov-09	\$1,142,350	\$1,142,350	\$0
Dec-09	\$1,144,782	\$1,144,782	\$0
Jan-10	\$1,140,683	\$1,140,683	\$0
Feb-10	\$1,140,705	\$1,143,563	\$2,858
Mar-10	\$1,140,727	\$1,141,076	\$349
Apr-10	\$1,140,748	\$1,141,097	\$348
May-10	\$1,140,770	\$1,141,117	\$347
Jun-10	\$1,140,792	\$1,141,138	\$346
<b>Total FY09-10</b>	<b>\$13,692,969</b>	<b>\$13,697,217</b>	<b>\$4,248</b>

NOTE: Shaded figures are *actuals* (versus *projections*).

The FY09-10 budgeted amount for the Human Services Care Fund is \$13,666,382. As shown below, current projections are roughly thirty-one thousand more than this budgeted amount.

**FY09-10 Human Services Care Fund  
Budget Comparison**

FY09-10 Budget	\$13,666,382
Current Projections	\$13,697,217
Amount Under-Funded	\$30,835



# 2000 Branch Library Improvement Bond

## QUARTERLY REPORT

First Quarter 2010

January - March



Potrero Branch Library

Opened March 6, 2010



*Building better libraries for stronger communities*

7

**Table of Contents**  
**Quarterly Report**  
**January – March 2010**

**Executive Summary**

- Program Highlights
- Program Summary
- Program Budget
- Program Schedule
- Project Summaries
- Program Management Activities

**Program Scope of Work**

**Program Schedule**

**Program Budget Reports**

- Revenue Plan
- Expenditures
- Cash Flow Projections

**BLIP in Action**

- Photos of Bernal Heights & Potrero Grand Opening Celebrations!
- Photos of Projects in Construction
- Renderings of Future Projects



*San Francisco Public Library*

Luis Herrera  
City Librarian



**BRANCH LIBRARY**  
IMPROVEMENT PROGRAM

Lena Ch'en, AIA  
Bond Program Manager



Edward D. Reiskin  
Director

**Executive Summary**  
**Quarterly Report**  
**January – March 2010**

**Program Highlights**

- **BERNAL HEIGHTS** – This beautifully renovated WPA-era library reopened on January 30, 2010. Hundreds of community residents joined City Librarian Luis Herrera, Senator Mark Leno, Assemblyman Tom Ammiano, Supervisor David Campos, DPW Director Ed Reiskin, and others to cut the red ribbon on the restored branch.
- **POTRERO** – This renovated branch, featuring the best view of any library in the City, reopened on March 6, 2010. Hundreds of community residents joined City Librarian Luis Herrera, Senator Mark Leno, Assemblyman Tom Ammiano, Supervisor Sophie Maxwell, DPW Director Ed Reiskin, and others to cut the red ribbon on the new branch.
- **BAYVIEW** – In order to increase opportunities for local hiring, the Department of Public Works issued an RFQ for a Construction Manager/General Contractor instead of bidding this project in the traditional low bid manner.
- **PARK** – This historic branch closed for renovation this quarter.
- **AMERICAN PUBLIC WORKS ASSOCIATION (APWA)** – The Richmond Branch Library received an award from their Northern California Chapter for excellence in Historical Restoration.
- **CALIFORNIA COUNTIES JOURNAL** – Featured the Branch Library Improvement Program in their March/April 2010 issue with a photograph of the newly renovated Eureka Valley Branch Library on the cover.
- **MUNICIPAL FISCAL ADVISORY COMMITTEE (MFAC)** –BLIP team members were nominated for a Public Managerial Excellence Award and honored at an awards ceremony at City Hall this quarter.



Potrero Branch Library view

## Program Summary

- Voters approved the Branch Library Improvement Bond in November 2000.
- The Branch Library Improvement Program consists of 24 branch library projects and a Support Services Center.
- The branch library projects call for 16 branches to be renovated, four leased facilities to be replaced with City-owned buildings, three branches to be replaced with new buildings, and the construction of the brand-new Mission Bay branch.
- The goals of the BLIP are to increase public safety through seismic strengthening and hazardous materials abatement; increase accessibility by conforming with the Americans with Disabilities Act (ADA); improve infrastructure through modernization and code compliance upgrades; and improve public library service through reconfigured interior spaces, adaptations for technology and, where possible, expansion.
- On July 22, 2008, the City & County of San Francisco Board of Supervisor's passed an ordinance amending the San Francisco Building Code, which mandates all city-owned buildings to achieve a minimum green building rating and certification of LEED silver. Future BLIP projects will achieve a minimum of LEED Silver.
- To complete the BLIP, a total of approximately \$48,400,000 in Lease Revenue Bonds are anticipated to be sold. The first sale of \$34,056,156 sold successfully on March 17, 2009. The Library Commission approved this addition to the program budget in May 2009.

## Program Budget

- Baseline Program Budget: \$133,265,000  
Current Program Budget: \$188,910,119  
Projected Program Budget: \$201,486,492
- The current Program Budget \$188,910,119 is funded from the following sources:

City Prop. A Bonds	\$105,865,000
Interest Proceeds	7,036,580
Lease Revenue Bond	34,056,156
Rents Realized	340,172
City ESP Bonds	2,400,000
State Prop. 14 Bonds	9,710,784
Library Preservation Fund	11,501,427
Developer Impact Fees Advanced for Vis Valley	2,000,000
Friends of the Library	16,000,000

- A total of \$138,412,939 has been *expended or encumbered* as of March 31, 2010:

City Prop. A Bonds	\$96,841,652
Bond Interest & Rents	3,382,860
Lease Revenue Bond	16,415,029
City ESP Bonds	2,400,000
State Prop. 14 Bonds	9,588,847
Library Preservation Fund	9,027,426
Friends of SFPL	757,125

- Actual *expenditures* through March 31, 2010 of \$116,991,460 are as follows:

City Prop. A Bonds	\$88,412,055
Bond Interest & Rents	3,192,161
Lease Revenue Bond	4,143,789
City ESP Bonds	2,400,000
State Prop. 14 Bonds	9,582,347
Library Preservation Fund	8,509,483
Friends of SFPL	751,625

- Funding anticipated from the following sources:

2 <sup>nd</sup> Sale, Lease Revenue Bonds	\$12,576,373
--	--------------

- A total of \$105,865,000 in Proposition A General Obligation Bonds have been sold in four bond sales and appropriated by the Board of Supervisors.
- The State awarded two March 2000 Proposition 14 grants totaling \$9.7 million for the Richmond and Ingleside projects for furniture and construction.
- The Board of Supervisors approved transfers from the Library Preservation Fund reserves into the Branch Library Improvement Program in FY 03/04, FY 05/06, FY 06/07, & FY 07/08.
- Proposition D passed by 74.5% which extended the Library Preservation Fund and allows the City to issue revenue bonds for branch improvements.
- In October 2008, \$5,747,210 of Library Preservation Funds was allocated to the BLIP as part of the FY 08/09 budget, including an advance of \$2,000,000 anticipated developer impact fees for the new Visitacion Valley library.
- In May 2009, \$34,056,156 of Lease Revenue Bonds was allocated to the BLIP as part of the first sale for 6 libraries and program wide services, including the cost of bond issuance.
- In February 2010, \$1,683,967 from G.O. Bond Interest and \$59,800 from Rents were allocated to the BLIP.

### Program Schedule

- Baseline project schedules were established in October 2001.
- The program schedule is alphabetized and includes original and currently approved schedules. Completed projects are shown in gray and black, while active projects are depicted by color-coded phases for design, bid/award/move out, construction, and final punch list/move in.

### Project Status Summaries

- The following project is in Design:

North Beach	Design Development completed
-------------	------------------------------

- The following project is in Bid & Award:

Bayview	An RFQ for CM/GC services was issued 3/2/10
---------	---

- The following projects are in Construction:

Parkside	66% Complete Plumbing & electrical
Visitacion Valley	59% Complete Under floor electrical & HVAC
Ortega	30% Complete Steel columns installed
Merced	43% Complete Framing
Anza	42% complete Plumbing and electrical
Golden Gate Valley	11% complete Soft demolition
Presidio	4% complete Haz Mat abatement
Park	Closed 2/27/10

- The following projects were completed this quarter:

Bernal Heights	Opening celebration held January 30, 2010!
Potrero	Opening celebration held March 6, 2010!



### Program Management Activities

- To date, library and management staff have sponsored or attended 618 public meetings to update neighborhoods, merchant groups, legislative bodies and other organizations.
- Program budget reports are presented monthly to the Commission. Budget changes were last approved in February 2010 for Bayview, Park, Potrero, Golden Gate Valley, and the Program Reserve.
- Program schedule reports are presented monthly to the Commission. Schedule changes were last approved in October 2009 for Anza, Merced, and Ortega.
- Ten projects are eligible for art enrichment: Glen Park, Ingleside, Mission Bay, Portola, Richmond, Visitacion Valley, Potrero, Ortega, Bayview, and North Beach. An art enrichment master plan was presented to the Library Commission in 2002 and revised in September 2008. Public art has been installed in Glen Park, Mission Bay, Ingleside, Portola, & Potrero. Artists have been selected for Richmond, Ortega, and Bayview.
- Five design teams were selected for renovation projects in 2002 through a competitive RFQ process. Contracts have been certified with Carey & Co. for Noe Valley, Tom Eliot Fisch / Field Paoli for Marina, Thomas Hacker Architects for West Portal and Parkside, Fougerson Architecture for Sunset, and Leddy Maytum Stacey for North Beach.
- Two design teams were selected for the new Ingleside and Portola branches in 2002 through a competitive RFQ process. Contracts have been certified with Fougerson Architecture /Group 4 for Ingleside and Stoner Meek / Noll & Tam Architects for Portola.
- A Memorandum of Understanding has been completed between the Department of Public Works & San Francisco Public Library.
- Bureau of Architecture services have been negotiated for Excelsior, Richmond, Visitacion Valley, Ortega, Western Addition, Bernal Heights, Potrero, Ortega, Merced, and Anza.
- A contract was awarded to Kwan Henmi/ Marie Fisher Interior Design in 2003 to develop program-wide interior design standards.
- A contract was awarded to Joseph Chow & Associates in 2007 to update program-wide interior design standards in conjunction with the Bureau of Architecture.
- Three bookmobiles have been purchased and are serving the Bernal Heights, Eureka Valley, Potrero, Parkside, Anza, Merced, and Ortega communities while their branches are under construction.
- Two Library Planners (Leslie Nordby & Dubberly Garcia Associates, Inc.) were selected in 2007 through a competitive RFQ process to help with branch building programs. Five Library Planners were selected through an earlier RFQ in 2002.
- Three design teams were selected through a competitive RFQ process in 2007: Tom Eliot Fisch/Paulett Taggart for Park & Presidio; Field Paoli/ Joseph Chow & Associates for Golden Gate Valley; and Thomas Hacker Architects for Bayview.
- The BLIP won a Special Achievement Award from the AIA (3/5/09)
- The BLIP won two preservation awards for the Noe Valley Branch Library restoration – the Governor’s Historic Preservation Award (11/21/08) and a California Preservation Foundation Design Award (9/19/09)
- The BLIP won a Historic Restoration Award from the American Public Works Association for the restoration of the Richmond Branch Library.

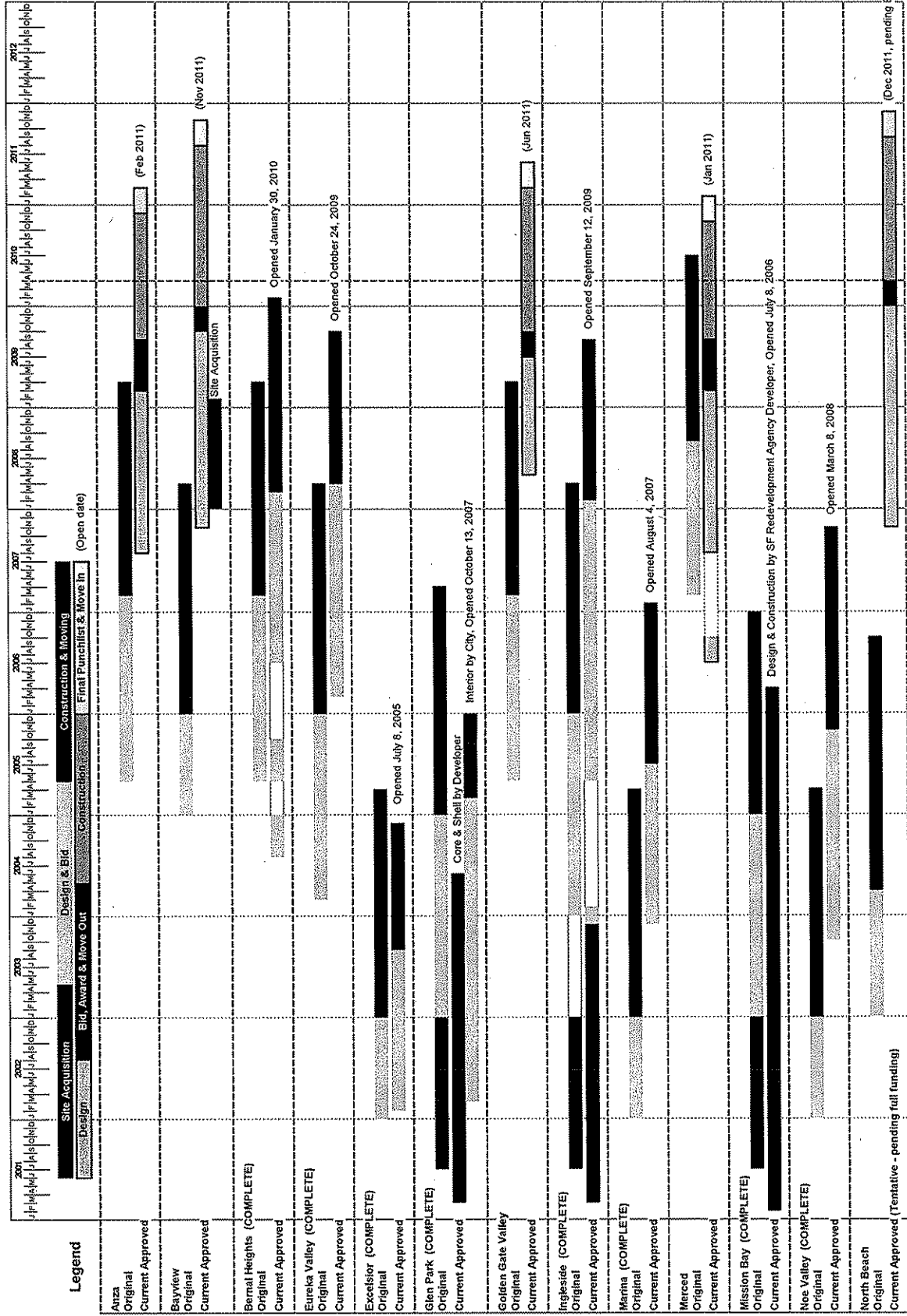
## Scope of Work

The bond program includes 7 site acquisitions, new construction of 8 branch libraries, and renovation and/or expansion of 16 existing branches and a support services center. Renovations will include some or all of the following: seismic strengthening, hazardous material abatement, Americans with Disabilities Act conformance, code compliance, electrical and mechanical upgrades, technology improvements, and reconfiguration of interior spaces.

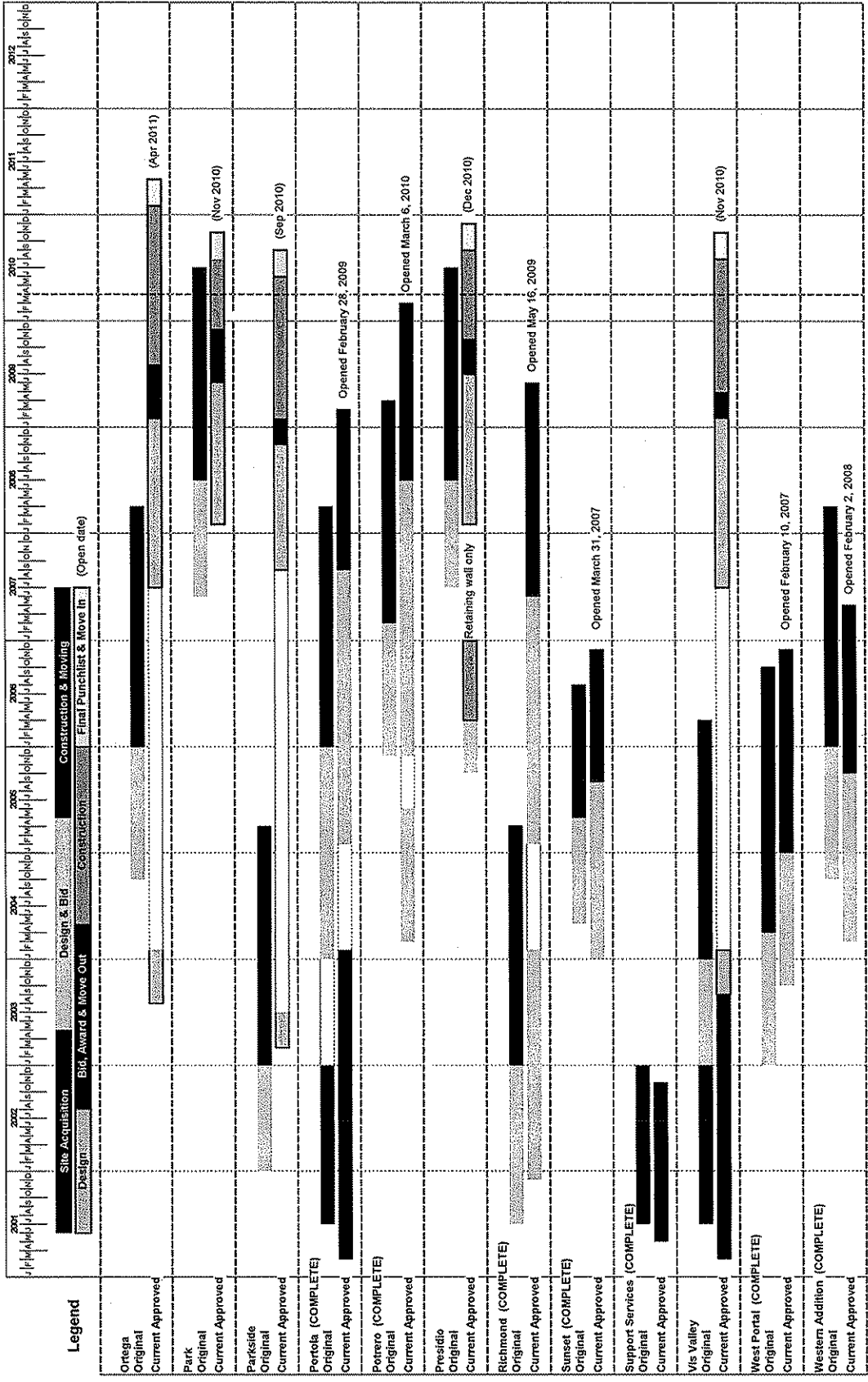
	Renovation and/or Expansion	Site Acquisition	New Construction	Opening Date for Completed Projects
Anza	•			
Bayview		•	•	
Bernal Heights	•			Jan. 30, 2010
Eureka Valley	•			Oct. 24, 2009
Excelsior	•			July 9, 2005
Glen Park		•	•	Oct. 13, 2007
Golden Gate	•			
Ingleside		•	•	Sept. 12, 2009
Marina	•			Aug. 4, 2007
Merced	•			
Mission Bay		•	•	July 8, 2006
Noe Valley	•			March 8, 2008
North Beach*			•	
Ortega			•	
Park	•			
Parkside	•			
Portola		•	•	Feb. 28, 2009
Potrero	•			March 6, 2010
Presidio	•			
Richmond	•			May 16, 2009
Sunset	•			Mar. 31, 2007
Visitation Valley		•	•	
West Portal	•			Feb. 10, 2007
Western Addition	•			Feb. 2, 2008
Support Center	•	•		Feb. 2005

\* Pending full funding

# Program Schedule



# Program Schedule



### Program Budget Reports - Revenue Plan

Branch	Baseline Budget (10/01)	Approved Budget (2/10)	City Prop. A Bonds	Lease Revenue Bond (RB)	Library Preservation Fund	State Prop. 14 Bonds	Other Funds	Total All Sources
<b>Site Acquisitions / New Construction</b>								
Bayview	3,820,000	11,830,796	2,489,060	5,809,810	1,226,705	-	2,295,221 (3,6)	11,830,796
Glen Park	4,570,000	5,487,518	5,217,952	-	269,526	-	-	5,487,518
Ingliside	4,570,000	7,034,000	2,636,502	-	640,605	3,751,943	4,950 (3)	7,034,000
Mission Bay	3,350,000	3,737,573	3,736,026	-	1,548	-	-	3,737,573
North Beach	3,460,000	3,500,000	931,400	2,317,500	232,500	-	18,600 (3)	3,500,000
Ortega	3,560,000	10,020,492	890,442	8,293,192	836,858	-	-	10,020,492
Portola	4,570,000	6,180,800	5,550,308	-	120,300	-	520,194 (3)	6,180,800
Visitacion Valley	5,320,000	13,388,281	10,475,991	-	342,000	-	2,580,290 (3,4,5)	13,388,281
Support Services	9,080,000	8,887,578	8,794,422	-	-	-	73,156 (3,4)	8,887,578
<b>SUBTOTAL</b>	<b>42,300,000</b>	<b>70,067,038</b>	<b>40,732,140</b>	<b>16,420,502</b>	<b>3,670,042</b>	<b>3,751,943</b>	<b>5,492,411</b>	<b>70,067,038</b>
<b>Renovations</b>								
Anza	4,740,000	7,726,324	5,104,901	1,587,443	525,350	-	508,630 (3)	7,726,324
Bernal Heights	5,350,000	5,743,000	5,189,812	-	280,210	-	262,876 (3)	5,743,000
Eureka Valley	4,580,000	4,422,000	3,687,824	-	153,925	-	580,151 (3)	4,422,000
Excelsior	3,820,000	3,594,441	3,594,441	-	-	-	-	3,594,441
Golden Gate Valley	5,340,000	8,472,283	808,684	7,184,733	287,550	-	191,316 (3)	8,472,283
Marina	4,110,000	3,898,319	3,823,319	-	-	-	75,000 (3)	3,898,319
Merced	4,200,000	5,410,462	338,950	4,142,571	684,034	-	236,907 (3)	5,410,462
Noe Valley	4,410,000	5,480,854	5,472,454	-	8,500	-	-	5,480,854
Park	1,310,000	2,898,893	2,852,043	-	46,850	-	-	2,898,893
Parkside	2,880,000	4,352,400	4,205,190	-	147,210	-	-	4,352,400
Potrero	4,230,000	5,428,847	4,603,371	-	212,998	-	610,478 (3)	5,428,847
Presidio	1,530,000	4,181,846	4,128,896	-	54,760	-	-	4,181,846
Richmond	7,630,000	13,711,500	2,770,301	-	2,582,358	5,958,841	2,400,000 (1)	13,711,500
Sunset	1,490,000	1,459,109	1,449,109	-	10,000	-	-	1,459,109
West Portal	4,110,000	4,420,981	4,420,981	-	-	-	-	4,420,981
Western Addition	3,430,000	4,304,817	3,343,851	-	960,966	-	-	4,304,817
<b>SUBTOTAL</b>	<b>63,160,000</b>	<b>85,503,976</b>	<b>65,600,327</b>	<b>12,914,747</b>	<b>5,964,707</b>	<b>5,958,841</b>	<b>4,865,360</b>	<b>85,503,976</b>
<b>Program-Wide Services &amp; Costs</b>								
Library Program Costs	800,000	780,000	764,982	-	-	-	15,018 (3)	780,000
Program Consultants	750,000	1,165,000	1,165,000	-	-	-	-	1,165,000
Program Management	3,600,000	7,158,372	5,965,975	1,158,372	-	-	34,025 (3)	7,158,372
Real Estate Dept	120,000	235,281	235,281	-	-	-	-	235,281
Art Enrichment Program	-	352,000	281,324	-	70,000	-	10,676 (3)	352,000
Temporary Services & Moving	4,360,000	522,559	422,659	-	100,000	-	-	522,559
Furniture & Equipment Reserv	15,000,000	16,411,700	-	-	411,700	-	16,000,000 (2)	16,411,700
Bond Financing Costs	1,500,000	2,202,455	344,227	1,005,655	-	-	852,573 (3)	2,202,455
Debt Service Reserve	-	2,471,797	-	2,471,797	-	-	-	2,471,797
Program Reserve	1,075,000	2,029,941	153,185	85,063	1,284,984	-	506,689 (3)	2,029,941
<b>SUBTOTAL</b>	<b>27,605,000</b>	<b>33,339,105</b>	<b>9,332,533</b>	<b>4,720,907</b>	<b>1,866,684</b>	<b>-</b>	<b>17,416,981</b>	<b>33,339,105</b>
<b>TOTAL</b>	<b>133,265,000</b>	<b>188,910,119</b>	<b>105,855,000</b>	<b>34,056,156</b>	<b>11,501,427</b>	<b>9,710,784</b>	<b>27,776,752</b>	<b>188,910,119</b>

- (1) Earthquake Safety Program funds remaining for Branch Libraries (\$2,400,000)
- (2) Private donations from Friends of the Library (\$16,000,000)
- (3) Bond Interest proceeds appropriated (\$1,673,481; \$3,879,132)
- (4) Rents received & appropriated (\$128,342; \$152,030; \$59,600)
- (5) Advance for Developer Impact Fees (\$2,000,000)
- (6) Bond Interest proceeds to be appropriated pending Controller's release of reserve (\$1,883,967)

## Program Budget Reports -- Expenditures

Branch	Category	Current Budget (2/10)	Actual Expenditures & Encumbrances 31-Mar-10
<b>Anza</b>	Soft Costs	3,396,546	1,654,966
	Construction Costs	4,329,778	3,829,795
	<b>SUBTOTAL</b>	<b>7,726,324</b>	<b>5,484,761</b>
<b>Bayview</b>	Site Aquisition	1,170,795	1,170,795
	Soft Costs	3,814,983	1,878,970
	Construction Costs	6,845,018	-
<b>SUBTOTAL</b>	<b>11,830,796</b>	<b>3,049,765</b>	
<b>Bernal Heights (Complete)</b>	Soft Costs	1,887,164	1,504,905
	Construction Costs	4,035,836	4,035,799
	Moving Costs	20,000	9,600
<b>SUBTOTAL</b>	<b>5,743,000</b>	<b>5,550,304</b>	
<b>Eureka Valley (Complete)</b>	Soft Costs	1,773,848	1,431,261
	Construction Costs	2,628,152	2,628,057
	Moving Costs	20,000	8,500
<b>SUBTOTAL</b>	<b>4,422,000</b>	<b>4,067,818</b>	
<b>Excelsior (Complete)</b>	Soft Costs	1,438,897	1,438,897
	Construction Costs	2,128,896	2,128,896
	Moving Costs	26,648	26,648
<b>SUBTOTAL</b>	<b>3,594,441</b>	<b>3,594,441</b>	
<b>Glen Park (Complete)</b>	Site Aquisition	3,350,537	3,350,537
	Soft Costs	694,427	691,025
	Construction Costs	1,438,094	1,438,094
	Moving Costs	4,460	4,460
<b>SUBTOTAL</b>	<b>5,487,518</b>	<b>5,484,116</b>	
<b>Golden Gate Valley</b>	Soft Costs	4,337,403	1,430,823
	Construction Costs	4,134,880	3,391,306
	<b>SUBTOTAL</b>	<b>8,472,283</b>	<b>4,822,129</b>
<b>Ingleside (Complete)</b>	Site Aquisition	1,839,205	1,839,205
	Soft Costs	3,743,088	3,658,635
	Construction Costs	1,451,707	1,447,747
<b>SUBTOTAL</b>	<b>7,034,000</b>	<b>6,945,587</b>	
<b>Marina (Complete)</b>	Soft Costs	1,024,100	949,100
	Construction Costs	2,866,499	2,866,499
	Moving Costs	7,720	7,720
<b>SUBTOTAL</b>	<b>3,898,319</b>	<b>3,823,319</b>	
<b>Merced</b>	Soft Costs	2,147,961	1,336,168
	Construction Costs	3,262,501	2,826,305
<b>SUBTOTAL</b>	<b>5,410,462</b>	<b>4,162,473</b>	
<b>Mission Bay (Complete)</b>	Site Aquisition	3,736,025	3,736,025
	Moving Costs	1,548	1,548
<b>SUBTOTAL</b>	<b>3,737,573</b>	<b>3,737,573</b>	
<b>Noe Valley (Complete)</b>	Soft Costs	1,192,863	1,192,863
	Construction Costs	4,279,591	4,279,591
	Moving Costs	8,500	8,500
<b>SUBTOTAL</b>	<b>5,480,954</b>	<b>5,480,954</b>	
<b>North Beach</b>	Soft Costs	3,500,000	1,701,055
	Construction Costs	-	-
<b>SUBTOTAL</b>	<b>3,500,000</b>	<b>1,701,055</b>	
<b>Ortega</b>	Soft Costs	3,999,634	1,998,210
	Construction Costs	6,020,858	5,206,223
<b>SUBTOTAL</b>	<b>10,020,492</b>	<b>7,204,433</b>	
<b>Park</b>	Soft Costs	1,352,130	579,164
	Construction Costs	1,546,763	-
<b>SUBTOTAL</b>	<b>2,898,893</b>	<b>579,164</b>	
<b>Parkside</b>	Soft Costs	1,322,204	1,141,855
	Construction Costs	3,033,196	2,846,891
<b>SUBTOTAL</b>	<b>4,352,400</b>	<b>3,988,746</b>	
<b>Portola (Complete)</b>	Site Aquisition	1,288,274	1,288,274
	Soft Costs	1,452,988	1,234,230
	Construction Costs	3,449,538	3,449,537
<b>SUBTOTAL</b>	<b>6,190,800</b>	<b>5,972,041</b>	

Branch	Category	Current	Actual Expenditures & Encumbrances
		Budget (2/10)	31-Mar-10
<b>Potrero (Complete)</b>	Soft Costs	1,578,398	1,442,963
	Construction Costs	3,829,735	3,727,984
	Moving Costs	18,714	7,900
	<i>SUBTOTAL</i>	<i>5,426,847</i>	<i>5,178,847</i>
<b>Presidio</b>	Soft Costs	1,518,598	785,868
	Construction Costs	2,663,048	2,278,165
	<i>SUBTOTAL</i>	<i>4,181,646</i>	<i>3,064,033</i>
<b>Richmond (Complete)</b>	Soft Costs	3,057,496	3,014,378
	Construction Costs	10,634,004	10,424,133
	Moving Costs	20,000	17,170
	<i>SUBTOTAL</i>	<i>13,711,500</i>	<i>13,455,681</i>
<b>Sunset (Complete)</b>	Soft Costs	491,612	491,612
	Construction Costs	957,497	957,497
	Moving Costs	10,000	10,000
	<i>SUBTOTAL</i>	<i>1,459,109</i>	<i>1,459,109</i>
<b>Support Services (Complete)</b>	Site Aquisition	8,686,551	8,686,551
	Moving Costs	181,027	181,027
	<i>SUBTOTAL</i>	<i>8,867,578</i>	<i>8,867,578</i>
<b>Visitacion Valley</b>	Site Aquisition	2,200,405	2,200,405
	Soft Costs	3,709,825	2,156,081
	Construction Costs	7,488,051	6,865,934
	<i>SUBTOTAL</i>	<i>13,398,281</i>	<i>11,222,420</i>
<b>West Portal (Complete)</b>	Soft Costs	1,009,109	1,007,966
	Construction Costs	3,403,124	3,403,124
	Moving Costs	8,748	8,748
	<i>SUBTOTAL</i>	<i>4,420,981</i>	<i>4,419,838</i>
<b>Western Addition (Complete)</b>	Soft Costs	1,314,227	1,313,434
	Construction Costs	2,980,126	2,980,126
	Moving Costs	10,464	10,464
	<i>SUBTOTAL</i>	<i>4,304,817</i>	<i>4,304,024</i>
		4,304,817	

**Program-Wide Services & Costs**

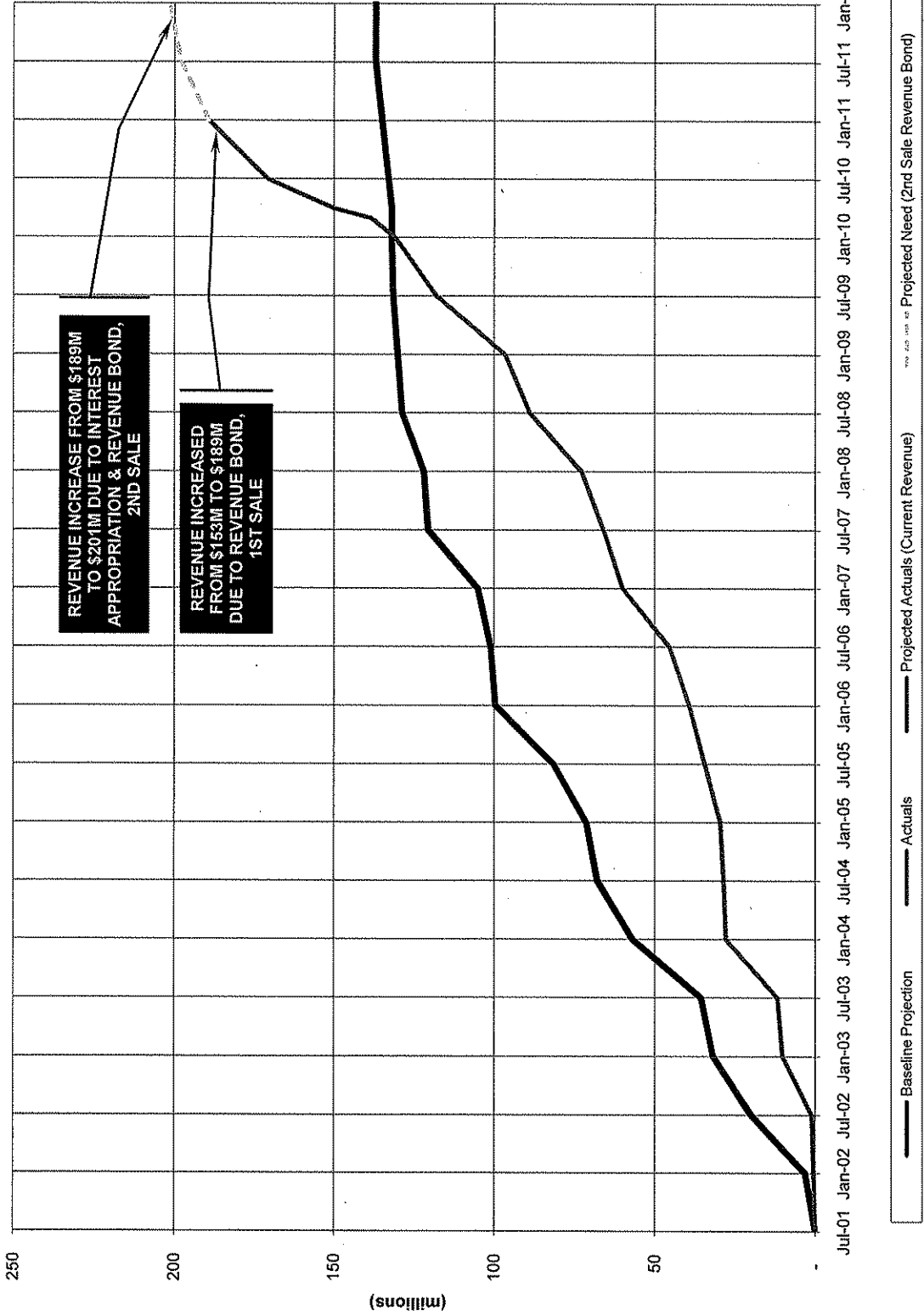
Library Program Costs	780,000	608,232
Program Consultants	1,165,000	1,123,320
Program Management	7,158,372	5,613,845
Real Estate Dept	235,281	235,281
Art Enrichment Fund	362,000	356,379
Moving & Interim Services	522,559	465,511
Furniture & Equipment Reserve	16,411,700	757,125
Bond Financing Costs	2,202,455	1,633,037
Debt Service Reserve	2,471,797	-
Program Reserve	2,029,941	-
<i>SUBTOTAL</i>	<i>33,339,105</i>	<i>10,792,730</i>

<b>TOTAL</b>	<b>188,910,119</b>	<b>138,412,939</b>
--------------	--------------------	--------------------

# Program Budget Report

## Cash Flow Projections

Baseline, Actuals and Projected Actuals  
Expenditures and Encumbrances





**BLIP in Action**

**Bernal Heights Branch Library**



Opening Day January 30, 2010



Celebration Activities



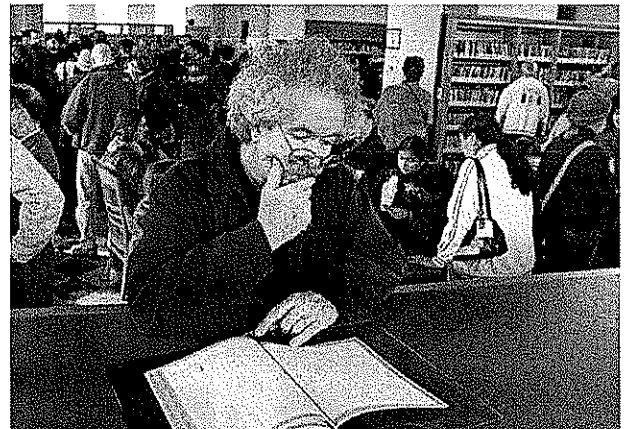
Celebration Activities



Children's Reading Room



Main Reading Room



Main Reading Room

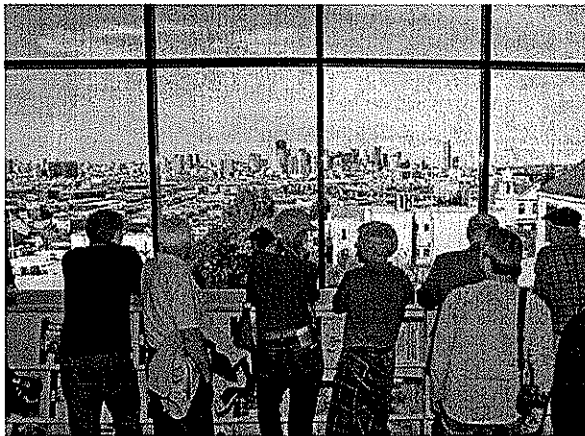
**Potrero Branch Library**



Opening Day March 6, 2010



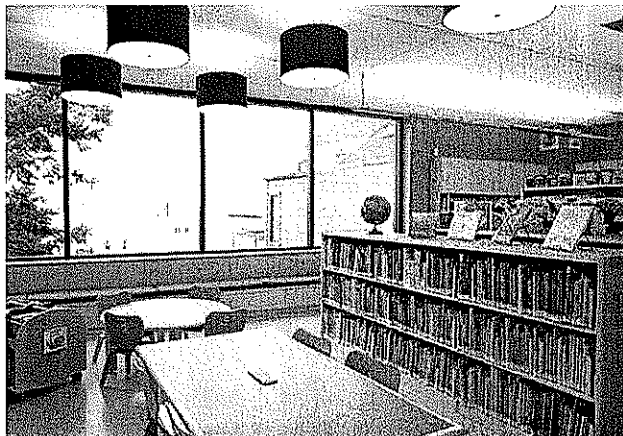
Main Staircase



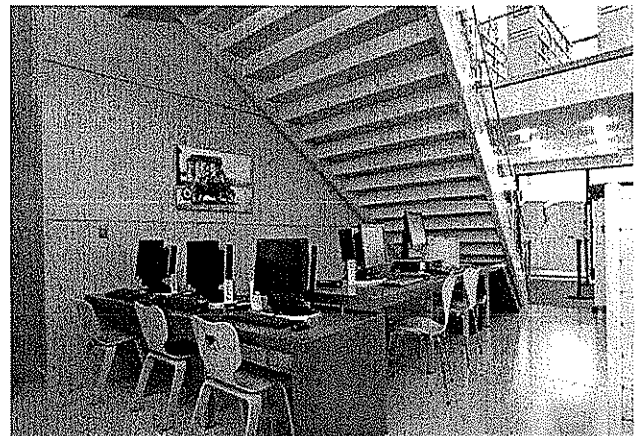
View From Upper Level Reading Room



Upper Level Reading Room

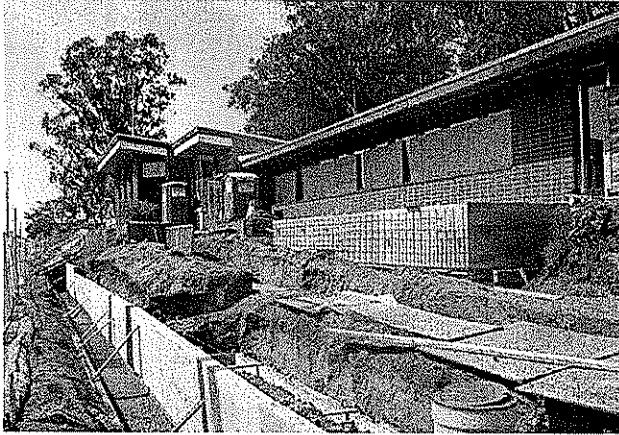


Children's Reading Room

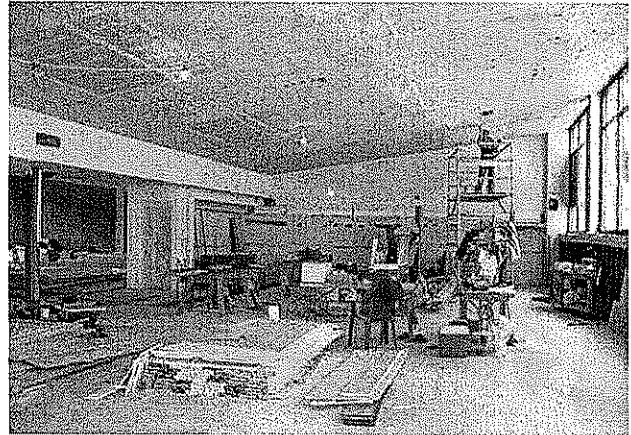


Children's Computer Area

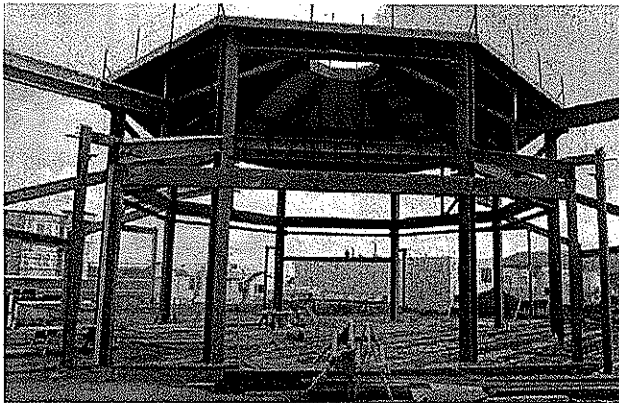
**Photos of 8 Projects under Construction (in order of completion)**



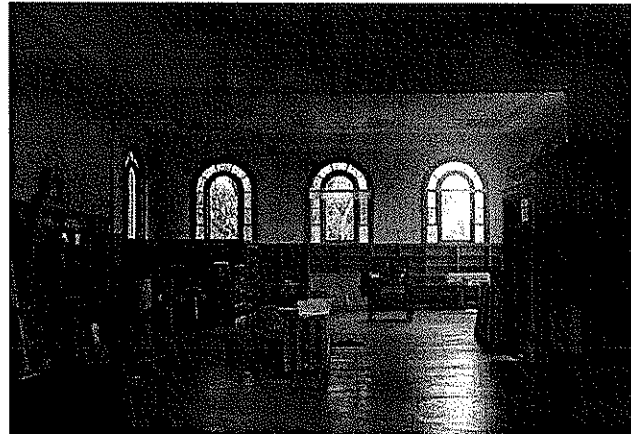
Parkside Branch Library – Exterior Ramp  
Slated to Open Fall 2010



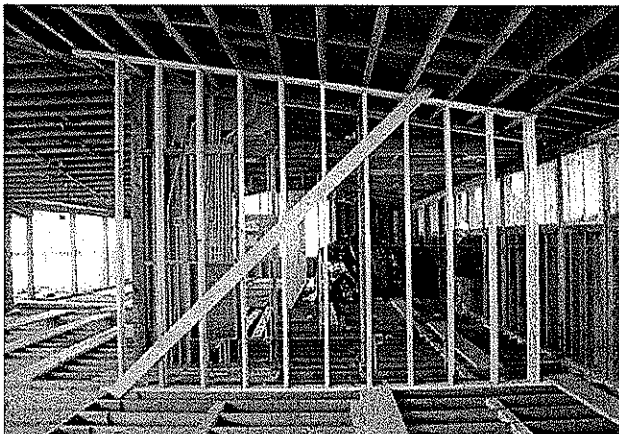
Parkside Branch Library – Adult Reading Room  
Slated to Open Fall 2010



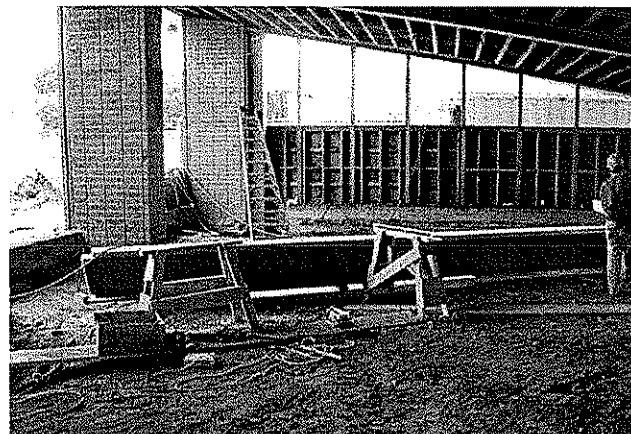
Visitacion Valley Branch Library – Southwest View  
Slated to Open Winter 2010



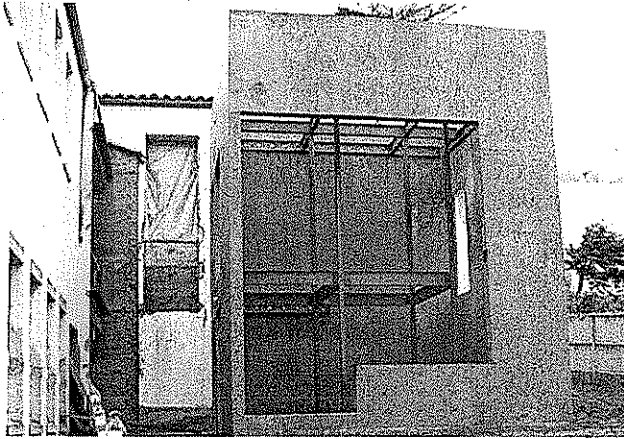
Presidio Branch Library – Reading Room Facing East  
Slated to Open Winter 2010



Merced Branch Library – Staff Workroom Wall  
Slated to Open Winter 2011



Merced Branch Library – East Reading Room  
Slated to Open Winter 2011



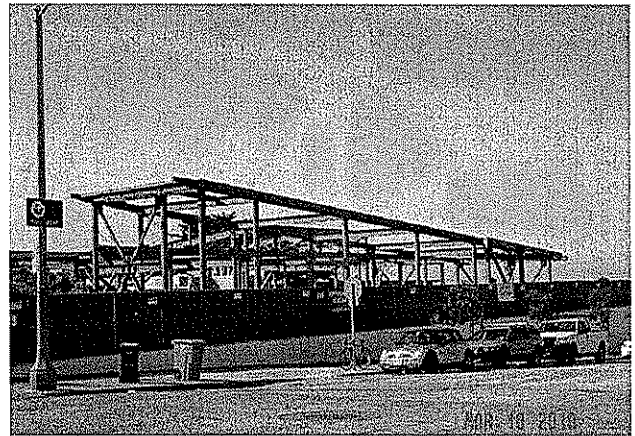
Anza Branch Library - Elevator Tower  
Slated to Open Winter 2011



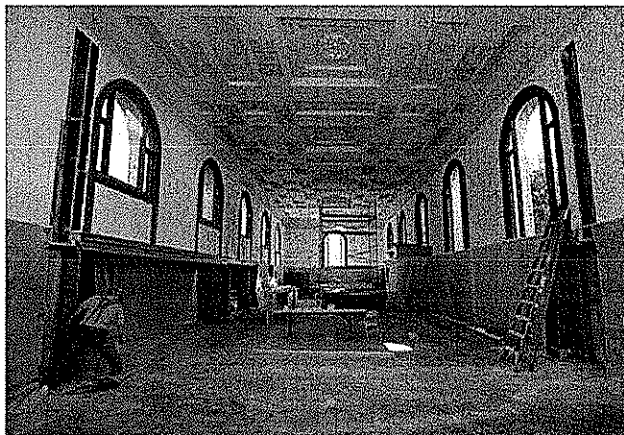
Anza Branch Library - Program Room Windows  
Slated to Open Winter 2011



Ortega Branch Library - Steel Framing Work  
Slated to Open Spring 2011



Ortega Branch Library - Steel Framing  
Slated to Open Spring 2011



Golden Gate Valley Branch Library - Reading Room  
Slated to Open Summer 2011



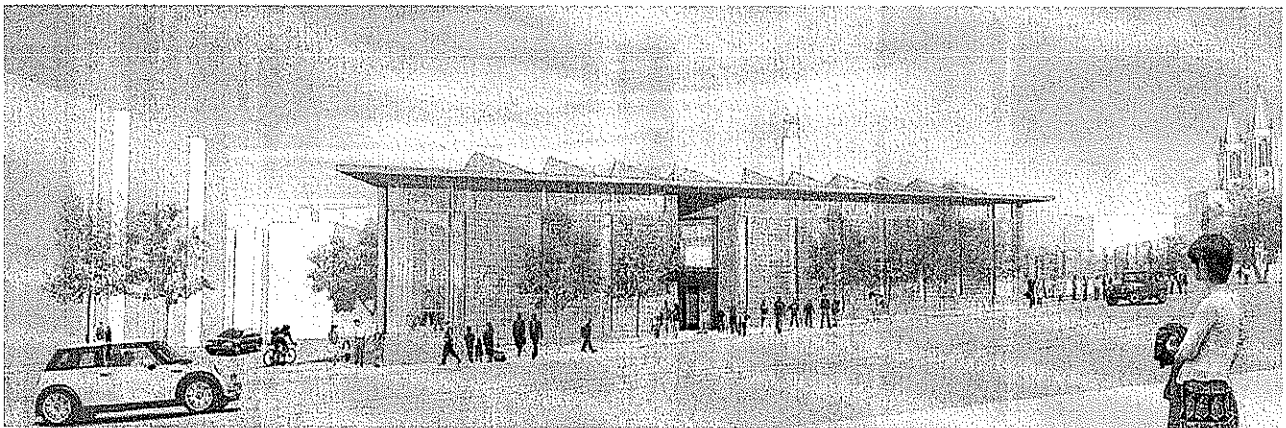
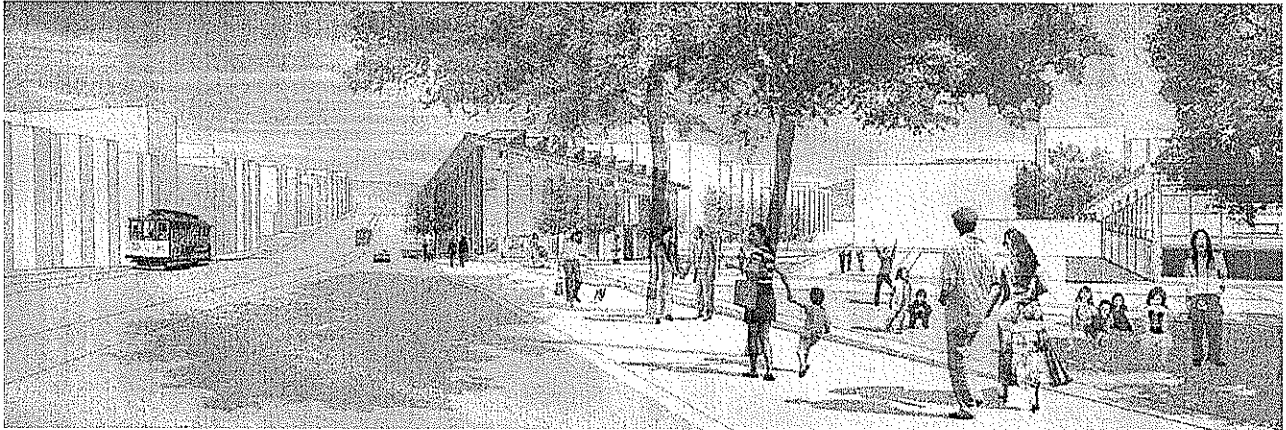
Golden Gate Valley Branch Library - Demo of New Workroom

**Rendering of 1 Project in Bid/Award Phase**



Bayview Branch Library - New Construction  
RFQ for CM/GC due April 9, 2010

**Renderings of 1 Project under Design**



North Beach Branch Library - New Construction  
100% Design Development

# City and County of San Francisco

Office of the Controller – City Services Auditor

*BOS-11 Rec'd emailed reports*

To: Angela Calvillo,  
Clerk of the Board  
From: Office of the Controller  
City Services Auditor

Document is available  
at the Clerk's Office  
Room 244, City Hall

## DEPARTMENT OF PUBLIC HEALTH:

**Monitoring of A-133 Single Audit  
Reports for Agencies Awarded  
Federal Funds by DPH in  
Fiscal Year 2008-09**

RECEIVED  
BOARD OF SUPERVISORS  
SAN FRANCISCO  
2010 APR 22 PM 12:00  
BY PN



April 22, 2010

8



Brooke Alarcon  
<2justbea@gmail.com>

04/25/2010 08:28 PM

To MTABoard@sfmta.com, Gavin.Newsom@sfgov.org,  
Board.of.Supervisors@sfgov.org

cc

bcc

Subject Marina District Parking

My name is Brooke and I'm writing to you because I have been informed that the city is considering increasing the meter fees to up to \$6.00/hr, extending meters until 10pm, and requiring meter use on Sundays all in the Marina district as well as charging for parking at the Marina Green. I currently am an employee who works in the Marina and depends on driving into the neighborhood for work because I begin work before public transit begins it's service in my neighborhood. I live on a very tight budget having had to change my career and return to school after being affected by the recession. I desperately need to keep this job and fear that I will lose way too much money if I'm being forced to pay these prices 5 days a week. In addition, I work as a personal trainer at a Marina health club and may lose business if my clients are driven away by not wanting to spend more money on parking when we have an appointment. This will greatly affect my ability to maintain a decent standard of living so please do not start charging for parking at the Marina Green or extend the meter hours to 10pm, require meters on Sunday, and/or increase the meter fees up to \$6.00/hr. Thank you,

Brooke Alarcon

9

Board of  
Supervisors/BOS/SFGOV  
04/21/2010 04:03 PM

To BOS Constituent Mail Distribution,  
cc  
bcc  
Subject Fw: Do Not Extend Meters



"Jason Glover"  
<Jason@JasonGlover.net>  
04/20/2010 09:35 PM

To <mtaboard@sfmta.com>, <Gavin.newsom@sfgov.org>,  
<board.of.supervisors@sfgov.org>  
cc  
Subject Do Not Extend Meters

Hello,

I am urging all of you not to allow the extension of the meters here in San Francisco.

I have become aware recently that the DPT is trying to extend the hours from 6PM to 10PM everyday as well as making people pay for parking on Sunday's... Plus they want to increase the amount you have to pay to \$6.00 and hour!!! This is not acceptable! And people of San Francisco will not agree to any increases what so ever...

I do not agree with any meter increases!!!

Jason

9



Board of  
Supervisors/BOS/SFGOV  
04/21/2010 04:04 PM

To BOS Constituent Mail Distribution,  
cc  
bcc  
Subject Please do not extend meters



Edward Martin  
<em1955@mac.com>  
04/20/2010 09:58 PM

To mtaboard@sfmta.com, Gavin.newsom@sfgov.org,  
board.of.supervisors@sfgov.org  
cc  
Subject Please do not extend meters

Hello,

I am urging all of you not to allow the extension of the meters here in San Francisco.

I have become aware recently that the DPT is trying to extend the hours from 6PM to 10PM everyday as well as making people pay for parking on Sunday's... Plus they want to increase the amount you have to pay to \$6.00 an hour!!! This is terrible! I've only been in SF for ten years but it's increasingly becoming an unfriendly place. Leaders are supposed to create worlds others want to belong to and the residents here are beginning to feel drained of resources to ride buses, make it to work on time with route and schedule cuts, etc. Everyone is empathetic with what it takes to run this City in these times but this will only serve to drive out renters and people with no garages.

Please, no meter increases!!!



Christina Filosa  
<christinafilosa@yahoo.com>

04/21/2010 10:53 AM

To MTABoard@sfmta.com, gavin.newsom@sfgov.org,  
Board.of.Supervisors@sfgov.org

cc

bcc

Subject Extended Parking Meters to 10pm and Meters on Sunday-  
Please NO!!!!!!!

To whom it May Concern;

I am a homeowner on Avila Street in the San Francisco Marina and I wanted to write today to express my grave concern about the notice I received from other neighbors that the city of San Francisco Parking is intending to extend parking meters and have meters on Sunday as well as raise the fees to \$6.00 per hour.

Please consider the drastic effects this will have on homeowners in the Marina. Street parking is already congested and we often times have issues with cars parking in our driveways as it is! The intent to raise money for the city by means of increasing parking rates and extending parking meters and having meters on Sunday is not a viable answer.

This idea is going to inconvenience homeowners in high traffic neighborhoods - we as tax payers should not have to be inconvenienced by this attempt by the city to increase revenues.

I would appreciate a response to this email and look forward to hearing that this consideration will be re-thought and this idea will quickly will be reconsidered.

Thank you-

Christina Jamison



"Hom, Nicole (US)"  
<Nicole.Hom@am.jll.com>  
04/20/2010 01:31 PM

To "mtaboard@sfmta.com" <mtaboard@sfmta.com>,  
"gavin.newsom@sfgov.org" <gavin.newsom@sfgov.org>,  
"board.of.supervisors@sfgov.org"

cc

bcc

Subject Oppose Extended Parking Meters

Dear Sirs:

My family opposes extended parking meters to 10:00pm, meters on Sundays and the raising of meter fees. This will cause an extreme hardship as we already have limited availability of residential parking in the neighborhood.

I appreciate your understanding in this matter.

Marina District Resident,

Nicole Hom  
321 Avila Street  
San Francisco, CA 94123  
415-922-9843

This email is for the use of the intended recipient(s) only. If you have received this email in error, please notify the sender immediately and then delete it. If you are not the intended recipient, you must not keep, use, disclose, copy or distribute this email without the author's prior permission. We have taken precautions to minimize the risk of transmitting software viruses, but we advise you to carry out your own virus checks on any attachment to this message. We cannot accept liability for any loss or damage caused by software viruses. The information contained in this communication may be confidential and may be subject to the attorney-client privilege. If you are the intended recipient and you do not wish to receive similar electronic messages from us in the future then please respond to the sender to this effect.

Board of  
Supervisors/BOS/SFGOV  
04/20/2010 02:03 PM

To BOS Constituent Mail Distribution,  
cc  
bcc  
Subject Parking



Irene Solomon  
<filbert@pon.net>  
04/20/2010 12:32 PM

To MTABoard@sfmta.com  
cc Gavin.Newson@sfgov.org, Board.of.Supervisors@sfgov.org  
Subject Parking

We are opposed to the extension of parking meter hours to Sunday and to the proposed increased parking rates in San Francisco.  
Eric Solomon  
Irene Solomon  
filbert@pon.net



MMercur@aol.com  
04/19/2010 02:33 PM

To MTABoard@sfmta.com, Gavin.Newsom@sfgov.org,  
Board.of.Supervisors@sfgov.org

cc

bcc

Subject DPT proposed parking changes

To Whom It May Concern,

I realize that the City of San Francisco is in need of revenue, but the proposed Parking changes are likely to result in unpaid tickets and unforeseen consequences. I personally have no problem with your extending meters until 10:00 PM and having meters in effect on Sunday, but I think raising the cost to \$6.00 an hour is excessive, and hope this won't be done.

Thank you,

Marilyn Mercur  
Resident of San Francisco



Brooke O'Donnell  
<bodonnell@salesforce.com  
>

04/20/2010 03:42 PM

To "MTABoard@sfmta.com" <MTABoard@sfmta.com>,  
"Gavin.Newsom@sfgov.org" <Gavin.Newsom@sfgov.org>,  
"Board.of.Supervisors@sfgov.org"

cc

bcc

Subject: No to parking meter changes

To whom it may concern,

This email is to express my concern regarding extended hours for city parking meters and turning them on Sundays as well. I really believe this change will affect local commerce. I much less likely to drive to my favorite spots on Sunday and shop or have lunch knowing that I will be feeding the meter all day.

Thanks,

Brooke O'Donnell  
Training Account Executive  
**Salesforce.com Training & Certification**  
Direct: 415-901-5135  
Fax: 415-294-9044  
[bodonnell@salesforce.com](mailto:bodonnell@salesforce.com)



**GET CERTIFIED**  
Prove your Expertise.  
Open New Doors.

Board of  
Supervisors/BOS/SFGOV  
04/19/2010 02:24 PM

To BOS Constituent Mail Distribution,  
cc  
bcc  
Subject NO PARKING METER CHANGES IN THE MARINA!!!



Bill Phillips  
<billphil@gmail.com>  
04/18/2010 01:22 PM

To Michela.Alioto-Pier@sfgov.org,  
board.of.supervisors@sfgov.org, gavin.newsom@sfgov.org,  
mtaboard@sfmta.com  
cc  
Subject NO PARKING METER CHANGES IN THE MARINA!!!

Mayor Newsom, Supervisor Alioto-Pier, MTA Board and Board of Supervisors:

I, along with just about every single voter/resident in the Marina / Cow Hollow district, am **strongly opposed** to the proposed parking meter changes in the Marina which would include extending the meter hours to 10:00pm, raising the fees to \$6.00 per hour and active meters on Sundays. Doing so will only further exacerbate the difficulty of street parking in our neighborhood and I am not at all convinced that any of the additional revenue would go towards improving conditions in our district. Additionally, I am strongly opposed to the proposed halfway house on Lombard @ Scott St.

If any of these proposed changes are passed and implemented, you can be sure that you will not receive my vote in future elections, and that I would be inclined to get involved in working to ensure turnover at your respective elected positions.

Thank you,  
Bill Phillips  
3440 Pierce St  
San Francisco, CA 94123



YaYaTalk Moviepass  
<yayataalkmoviepass@yahoo.  
com>

04/19/2010 12:01 PM

To MTABoard@sfmta.com, Gavin.Newsom@sfgov.org,  
Board.of.Supervisors@sfgov.org

cc

bcc

Subject Please do not extend SF meter parking hours and NO meters  
on Sunday

Please DO NOT:

extend SF meter parking hours,  
NO meters on Sunday,  
NO fee increases for the meters in San  
Francisco

Thanks.

Yar Wei





"Jason Gorski"  
<jgorski@paragon-re.com>  
04/20/2010 04:10 PM

To <mtaboad@sfmta.com>, <gavin.newsom@sfgov.org>,  
<board.of.supervisors@sfgov.org>  
cc  
bcc

Subject NO TO EXTENDED METER HOURS NO TO METERS ON  
SUNDAY NO TO ANY FEE'S RAISED!!!

Thank you,

Jason Gorski  
Realtor | DRE # 01339924  
Paragon Real Estate Group  
1400 Van Ness Av  
SF, CA 94109  
D | 415.701.2603  
C | 415.533.9370  
F | 415.701.2653  
E | [jgorski@paragon-re.com](mailto:jgorski@paragon-re.com)  
W | [www.paragon-re.com](http://www.paragon-re.com)

Board of  
Supervisors/BOS/SFGOV  
04/20/2010 01:53 PM

To BOS Constituent Mail Distribution,  
cc  
bcc  
Subject SF meter proposals



Nicole Miller  
<nmliller629@gmail.com>  
04/19/2010 06:38 PM

To MTABoard@sfmta.com, Gavin.Newsone@sfgov.org,  
Board.of.Supervisors@sfgov.org  
cc  
Subject SF meter proposals

To whom it may concern,

I am a Marina district resident and your proposed idea to raise the meter fees and extend the hours of operation for meters to include evenings and Sundays is an idea that will only create more chaos and frustration for SF residents and visitors. Parking is already so difficult in this city and so many people cannot and will not afford such increases and changes to our parking options. I can only hope this idea does not come to fruition. Instead, we should be coming up with ways to make parking easier and more affordable. If you want to encourage people to take public transportation (which I support), then you need to make MUNI more convenient and a viable option, rather than make it even more frustrating to park.

As anyone who has driven around hopelessly looking for parking can tell you, the added frustration of such a measure would have a clear impact on the quality of life in San Francisco. My vote in future elections will be applied to those who can better serve my community.

Thank you,

Nicole Miller  
3345 Divisadero St.  
SF, CA 94123

Document is available  
at the Clerk's Office  
Room 244, City Hall

Sup Mar  
C Page

General Manager Phil Ginsburg,

We are members of the Golden Gate Park Senior Center (GGPSC). We enjoy all the activities and programs offered at the Center as well as socializing with other seniors. It is a "home" where everyone is warmly welcomed and treated with dignity and respect. This is due largely to the efforts of the two directors. Not only do they tend to daily administrative duties, they also conduct exercise classes for us seniors as well. The classes are at full capacity and many seniors are turned away and put on an unenviable "waiting list". The popularity of these classes is proof of our directors' skill and dedication in providing us seniors with a chance to be healthier thru exercise. In addition to their above mentioned duties, the directors are strapped with the exhausting and overwhelming task of setting up tables and chairs for each of the 70 classes offered at the Center.

At this time, we would like to address an issue of much concern. News has circulated that the directors may lose their jobs. The Recreation and Parks Commission is proposing to lay off upwards of 120 full time 3284 Recreation Directors by eliminating this Civil Service classification. In place, 50 positions will be created under a new Civil Service classification, that of 3286 Recreation Coordinator. The sad part of this maneuver is that all laid off directors will be vying with the public for the 50 newly created positions.

Please allow the two directors to continue their employment at GGPSC. Many of the seniors have worked many years and contributed to the tax structure of this City. Don't we deserve to reap some benefits at this late stage in life?

Thank you for your attention in this matter.

cc: Mayor Gavin Newsom  
**Board of Supervisors**

Attachments: GGPSC's Daily Schedule  
Signature pages to the above letter

BY \_\_\_\_\_ AK

2010 APR 20 PM 1:25

RECEIVED  
BOARD OF SUPERVISORS  
SAN FRANCISCO

10

2347-17 Avenue  
San Francisco 94116  
April 14, 2010

Angela Calvillo, Clerk  
S. F. Board of Supervisors  
City Hall

Please accept my objection to approval of the proposed T-Mobile wireless communication network at 735 Taraval St (Lots Nos. 052-058 Block 2408).

While that Taraval address may be adjacent to some small scale businesses, all of the homes on neighboring 16th and 17th Avenues are single family residences many with young children. This network will not only further contribute to global warming but also we don't yet know its consequences on health of our residents.

Thank you -

Margaret McFadden  
2347-17<sup>th</sup> Ave  
2346-006

BY \_\_\_\_\_ AK

RECEIVED  
BOARD OF SUPERVISORS  
SAN FRANCISCO  
2010 APR 19 PM 3:54

(=)

File 100443



David  
<heydave@pacbell.net>  
04/20/2010 02:05 PM

To board.of.supervisors@sfgov.org  
cc  
bcc  
Subject Stop Rampant NIMBYism!

Supervisors:

As a 30-year long time resident of the North Beach/Russian Hill area, I urge the Board to NOT further impede the construction of the handsome building at 555 Washington St. and expanded Redwood Park by denying the NIMBY appeal of the EIR with specious nitpicking! The appeal arguments are absurd!

The design is one of the finest proposed in the City in years and deserves full approval!

Too many fine projects have been blocked in this area which is stagnating due to lack of new businesses and new housing in all price categories. The area is well-serviced by public transportation, and the building plan incorporates sufficient parking (barely) to accommodate the residents, so there will be little if any traffic impact in that area.

Let's get this fine addition to the skyline and neighborhood BUILT!

Thank you,  
David Ross  
San Francisco  
415 771-6661

12

File 100443



David Tornheim  
<DavidTornheim@hotmail.com>

04/20/2010 12:27 AM

To Bevan Dufty <Bevan.Dufty@sfgov.org>, Sean Elsbernd  
<Sean.Elsbernd@sfgov.org>, Chris Daly  
<chris.daly@sfgov.org>, Ross Mirkarimi

cc

bcc

Subject Please Reject the 555 Washington EIR

VIA FAX and E-MAIL (fax does not include attached article)

Dear Supervisors:

Please uphold the appeal and REJECT the EIR for 555 Washington Street.

Spot zoning, the disregard for height limits and encroachment of shadows beyond allowable limits by this project undermines the entire purpose of zoning and is contrary to the will of the voters in Propositions M and K. It violates the General Plan and Downtown Plan and sound planning principles.

It is my understanding that a building qualifying as a historic landmark is proposed to be demolished. We need to preserve not demolish our historic resources that make San Francisco a world-class destination of historical architectural beauty.

The proponents claim that the City is gaining more park land. This is not true. The park already exists and now proponents want the City to manage it instead, while casting new shadows over the existing park and other nearby parks.

This project creates more parking in an area than needs to become *less* car dependent, not only creating more congestion and undermining cash-strapped Muni's performance goals, but all the additional negative environmental impacts from increased vehicle use, including pedestrian and bicyclist fatalities by increasingly more aggressive and impatient drivers.

If you have not, I urge you to read this well written comment, by a notable architect [also cut and pasted below]:

Parman, John, "San Francisco's 555 Washington is a case study in what not to do", *The Architect's Newspaper*, 3/15/10

[http://archpaper.com/e-board\\_rev.asp?News\\_ID=4338](http://archpaper.com/e-board_rev.asp?News_ID=4338)

It makes these three important points:

1. Put a halt to case-by-case rezoning
2. Add density to the core, not the edge
3. Focus on urbanity, not just density

-David Tornheim  
1890 Grove St. #5  
San Francisco, CA 94117-1249

13

(415) 668-2353

03.15.2010

Comment> Urbanity, Not Just Density

San Francisco's 555 Washington is a case study in what not to do

[Photo caption; photo not provided here] In comparison to the Transamerica Pyramid, 555 Washington Street looks small, but its approval would immediately threaten lowrise neighbors to the north.

Courtesy Heller Manus

This Thursday, the San Francisco Planning Commission will again take up the proposed 38-story 555 Washington Street tower, designed by Heller Manus for developer Andrew Segal. During the last meeting, in which the commissioners failed to reach a consensus, venerable community activist Sue Hestor asked them, “Does ‘new urbanism’ say that we have to fight suburban sprawl by putting 400-foot buildings everywhere in San Francisco?” Hestor has a point. For far too long smart growth has meant density *über alles* on both sides of the Bay. The result is a dog’s breakfast, for the most part, much of which has little to do with walkable urbanism and nothing to do with urbanity. It’s time to get nuanced about density. As 555 Washington demonstrates, density’s context is not just the block itself—the immediate environs—but what is influenced and perhaps threatened by its increase.

The 555 Washington tower disregards current zoning for the block it shares with William Pereira’s 1972 Transamerica Pyramid, still the tallest building in the city. Next to it, the new tower doesn’t look so big, of course, and it comes with a packet of ground-level amenities. For Heller Manus, best known for political acumen, the design is OK: cribbed from the late-modern playbook, but OK. All of this has won it an endorsement from SPUR (San Francisco Planning and Urban Research Association), an important advocacy group in San Francisco.

So far, so good—I can imagine the trail of logic that brought SPUR on board. It all seems fairly harmless, and if it violates the planning code in the process, well, the code’s out of date anyway. So why should the Planning Commission hesitate to move ahead with 555 Washington when it takes it up again in mid-March? Here are three good reasons for them to slow the tower down and reconsider its larger context.

### **1. Put a halt to case-by-case rezoning**

Dropping a housing tower into the Pyramid block continues a sorry tradition of case-by-case rezoning in San Francisco. Back in May 2009, San Francisco Chronicle critic John King—addressing the 555 Washington tower specifically—spoke up for “a re-imagined, focused plan for the financial and retail district.” He also noted the price the city pays for not having one: “As long as downtown is up for grabs, in effect, count on the process to grow more strident and cynical.” San Francisco’s Planning Department may be hobbled by the downturn, King observed, but isn’t the real opportunity of a downturn to plan intelligently for the future?

Given the state of the housing market, there's no urgency at all to approve the tower. By delaying it, the commissioners can avoid repeating the travesty of exempting Heller Manus' Folsom/Spear Towers, now the Infinity, from the Rincon Area Plan. (They were approved, and then a new Rincon plan was announced—with a dotted line around the towers that suggested that its eastern boundary had been quickly redrawn.)

## **2. Add density to the core, not the edge**

The Pyramid block is on the northern edge of San Francisco's Financial District, considerably past California Street. To its north, the buildings are much lower, an eclectic mix whose tenants benefit from its current density. This is where you find two of the region's best bookstores, City Lights and Stout's, and many of its best dealers in the decorative arts. You want urbanity? It starts here, yet the area clearly thrives because of its proximity to the financial district. Shanghai, facing the same dilemma, has opted to preserve similar areas like the Puxi district, recognizing—as Singapore did not—that they are irreplaceable. This is why SF's planning code sought, a generation ago, to preserve the area. Let's give its framers some credit for foresight.

The question 555 Washington raises is not whether it's inappropriate for its site, but what happens next. As UC Berkeley's Peter Bosselmann, a professor of urban design, once pointed out to me, adding density at the edge puts pressure on the lower-density neighborhoods that adjoin it. He was talking about the Rincon area, but the comment is even more applicable to the north end of the central business district, where recent and proposed projects along Kearny Street are also testing the higher-density waters. A generation ago, KPF's building at 600 California had to step down to blend in with lower buildings to the north. Today, a developer doing the same project would be likely to use the occasion for mixed-use, assuming the planning code holds. If enough exceptions to the code get approved, the current edge is unlikely to hold.

## **3. Focus on urbanity, not just density**

The question to ask of density is what does it really contribute to the city? This takes in everything: scale and mix, design quality, effect on microclimate, synergy with surrounding uses, transit access, etc. As we rezone, so shall we reap. Instead of giving 555 Washington a pass, the Planning Commission could send a powerful message to the city and the developer community: no more case-by-case exceptionalism. There's never been a better time than now—the lull before the resumption of business as usual—to take a comprehensive look at how the central business district should grow, gaining rather than losing urbanity, and how much added density, if any, the districts north of it should absorb. These are the real and pressing issues. The tower can wait.

John Parman

**John Parman is a writer and editorial adviser to *The Architect's Newspaper* .**

Copyright © 2003-2010 | The Architect's Newspaper, LLC. | [about us](#) | [contact us](#) | [privacy policy](#)  
The Architect's Newspaper LLC, 21 Murray St. 5th Floor | New York, New York 10007 | tel.



File 100443



julie jaycox  
<jjaycox@hotmail.com>  
04/19/2010 11:58 PM

To <board.of.supervisors@sfgov.org>  
cc <thd@thd.org>  
bcc  
Subject Please Reject the 555 Washington EIR

Board of Supervisors,

I am not opposed to development in San Francisco. I am against development that ignores multiple voter-approved mandates and needs to be spot zoned. A perfectly acceptable and beautiful building can be designed and built in accordance with the local laws and mandates that doesn't require ignoring the voting public of San Francisco. All the time spent over years to create a vision of this city shouldn't be undone because the laws happen to be 'inconvenient.'

The EIR for 555 Washington fails to adequately analyze the impacts from this project that would require spot re-zoning of a single parcel to double the height limit: from 200 feet to 400 feet;  
violate the City's General Plan;  
cast additional shadows on 4 parks (Ferry Park, Maritime Plaza, Sidney Walton Park and Redwood Park);  
ignore the voter mandated Proposition K (which bans additional shadows on public parks);  
increase wind impacts above what the Planning Code allows;  
add more cars than allowed by the Code;  
require the vacation and conveyance of a public street (Mark Twain Alley/Merchant Street) to be added to the development site;  
and require numerous other exceptions and variances from the Code.

I am asking you to please Reject the 555 Washington EIR & support the THD appeal.

Respectfully,

Julie Jaycox

307 Green Street  
SF CA 94133

-----  
Wherever you go, go with all your heart.

~Confucius

Hotmail has tools for the New Busy. Search, chat and e-mail from your inbox. [Learn more.](#)

File 100443



Judy Irving  
<films@pelicanmedia.org>  
04/19/2010 10:06 PM

To <Board.of.Supervisors@sfgov.org>  
cc  
bcc  
Subject Birds say no

Dear Board of Supervisors,

The proposed building presents a clear hazard to migrating and resident birds, among many other problems. Regarding bird strikes (i.e., birds smashing into the building's glass walls, mistaking reflections for sky), the developers note that yes, there will be these unfortunate deaths, but an educational program for condo residents will encourage people to move house plants away from windows, and curtains will help, too! The person they consulted (Booker Holton) is not an avian expert. He is someone who is hired by developers to write EIRs. Holton states that the building location is not on a migratory route. This is not true; it is on the Pacific Flyway. (Please see Alan Hopkins's letter attached to THD's appeal. Hopkins is a well-known avian expert and former head of Golden Gate Audubon.) All of our parks in this peninsula city are oases on the Pacific Flyway, and migrating birds use Ferry Park. Like our resident wild parrots, who sleep only yards away from the building location, they need all the sunlight they can get; and so they don't kill themselves trying to fly through them, all birds need buildings they can see.

555 Washington is a reflective glass slinky that is twice as high as it should be, shades four parks, creates a wind tunnel, undermines the redwood trees that are supposedly our gift, adds luxury condos to our overstock, and makes a mockery of the City's existing, well-thought-out zoning regulations and General Plan. The developers made no real attempt to 'mitigate' any of these conditions in their final, inadequate EIR, and I urge you to reject it.

Thank you,  
Judy Irving  
Producer/Director  
"The Wild Parrots of Telegraph Hill"

File 100443



Siu-Mei Wong  
<siu\_mei\_wong@yahoo.com  
>

04/20/2010 01:21 PM

To David.Chiu@sfgov.org, Michela.Alioto-Pier@sfgov.org,  
John.Avalos@sfgov.org, David.Campos@sfgov.org,  
Carmen.Chu@sfgov.org, Chris.Daly@sfgov.org,  
cc Board.of.Supervisors@sfgov.org, president@thd.org

bcc

Subject Please Reject the 555 Washington EIR

Dear Board of Supervisors:

I am opposing the spot re-zoning of 555 Washington Street and the development project. There are so many disturbing elements associated with this proposal and the EIR fails to adequately evaluate the impact:

- It ignores voter approved legislature (Proposition K),
- It increases shadow limits on neighboring public parks,
- It creates exceptions, and allows spot re-zoning that doubles the building height limit,
- It creates wind tunnel effects to the pedestrians and the surrounding neighborhoods,
- It creates more downtown traffic for this and adjacent neighborhoods,
- It is not good City planning,
- It diminishes the quality and world-class image of our City as a whole.

Please reject the 555 Washington EIR & support the THD appeal. This Development Project is a bad proposal, and the adverse consequences on San Francisco will not be easily undone for generations to come.

Sincerely,

Siu-Mei Wong  
2363 Van Ness Ave. #303  
San Francisco, CA 94109-9407

File 100443



"Jan Robinson"  
<Jan.Robinson@amwins.com  
>  
04/20/2010 09:08 AM

To david.chiu@sfgov.org, bevan.dufty@sfgov.org,  
ross.mirkarimi@sfgov.org, chris.daly@sfgov.org,  
david.campos@sfgov.org, eric.l.mar@sfgov.org,  
cc board.of.supervisors@sfgov.org

bcc

Subject Reject Environmental Impact Report of 555 Washington

Dear Members of the Board of Supervisors:

I'm writing to urge you NOT to accept the badly flawed environmental impact report on 555 Washington Street. This EIR fails to take into account numerous exceptions to the current regulations, such as violation of the City's general plan, casting shadows on four parks by the doubling of the height limit – thereby ignoring Proposition K, increased "wind tunnel" effects, and adding more cars to an already congested area.

Some of the things that make our City so special, are the charming, historic neighborhoods, and the sweeping vistas that we all enjoy. Unfortunately, the building of high-rises that go past the current height restrictions, are diminishing those features, for not only City residents, but for the many tourists that visit from all over the world. Breaking height restrictions is particularly unfair to the surrounding neighbors – who must deal with blocked views, lack of light, and wind tunnel effects.

Please do what you can to preserve the North Beach neighborhood, which is one of the most popular in the City - and prevent the building of another unnecessary tower building. As a resident of San Francisco for over 27 years, I would appreciate it if you would enforce the current regulations, and protect the public interest in this matter.

Thank you in advance for your consideration.

Jan Robinson  
1940 Washington St., #C  
San Francisco, CA 94109

mailgate.amwins.com made the following annotations

-----  
This e-mail and any attachments may contain information that is privileged or confidential and is meant solely for the use of the person(s) to whom it was intended to be addressed. If you have received this e-mail by mistake, or you are not the intended recipient, you are not authorized to read, print, keep, copy or distribute this message, attachments, or any part of the same. If you have received this email in error, please immediately inform the author and permanently delete the original, all copies and any attachments of this email from your computer. Thank you.  
-----

File 100443

Board of  
Supervisors/BOS/SFGOV  
04/20/2010 01:55 PM

To BOS Constituent Mail Distribution,  
cc  
bcc  
Subject Just say NO to 555 Washington EIR



Betsy Brill  
<betsyb123@mac.com>  
04/20/2010 01:05 AM

To Board.of.Supervisors@sfgov.org  
cc  
Subject Just say NO to 555 Washington EIR

To the Board of Supervisors:

The 555 Washington project boggles the mind. I do hope we can count on your rejection of this EIR, which simply does not address the all the impacts of this project.

The 555 Washington project would require spot re-zoning of a single parcel to double the height limit -- from 200 feet to 400 feet. It would cast additional shadows on Ferry Park, Maritime Plaza, Sidney Walton Park and Redwood Park (FOUR parks in all) ignoring the voter-mandated Proposition K that (bans additional shadows on public parks (FOUR parks being shadowed). It also would increase wind impacts above Planning Code allowances; add more cars than allowed by the Code; convey a PUBLIC STREET (Mark Twain Alley/Merchant Street) to the development site (give me a break); and require numerous other exceptions and variances from the Code.

Frankly, this project is an insult to the spirit of responsible development.

Betsy Brill  
4 McCormick St.  
San Francisco, CA  
94109



"Kathy Howard"  
<kathyhoward@earthlink.net>

04/22/2010 03:32 AM

Please respond to  
<kathyhoward@earthlink.net>

To "Bevan Dufty" <Bevan.Dufty@sfgov.org>,  
<Chris.Daly@sfgov.org>,  
<Board.of.Supervisors@sfgov.org>,

cc

bcc

Subject 555 Washington Street - thank you!

Supervisor,

Thank you for acting in the best interests of San Francisco and rejecting the EIR for the 555 Washington Street project. I hope that you will consider to look critically at all environmental documents that are presented to you for your review in the future.

Katherine Howard

San Francisco

# 100443



"David A. Smolen"  
<smolen@gmail.com>  
04/19/2010 03:34 PM

To David.Chiu@sfgov.org, Bevan.Dufty@sfgov.org,  
Ross.Mikarami@sfgov.org, Chris.Daly@sfgov.org,  
David.Campos@sfgov.org, Eric.L.Mar@sfgov.org,  
cc Board.of.Supervisors@sfgov.org, president@thd.org  
bcc

Subject Please Reject the 555 Washington EIR

Dear San Francisco Board of Supervisors:

As a concerned resident of Telegraph Hill in District 3 and someone who works in the Financial District of San Francisco, I urge you to reject the Final Environmental Impact Report for the 555 Washington Street project and the project itself for many reasons, the two largest of which are enumerated below.

First and foremost, I am strongly opposed to "spot zoning" for the site from its original 200 foot height limit to a height above 400 feet. Such an exception to a well thought out Downtown Plan would disrupt, if not destroy, the tapering of heights from 400 feet at California to 200 feet at Washington Street. It is critical that the transition between the Downtown core and the low-rise historic districts of Jackson Square, Chinatown and North Beach be respected – and that the delicate balance between downtown and the historic neighborhoods be maintained from further erosion.

Secondly, the shadow trade off deal -- whereby new shadows would be allowed on two existing public park sites in exchange for transferring a slightly larger Redwood Park to the City's jurisdiction -- is, in the parlance of the financial markets, simply a bad trade. The City and its agencies and commissions, as stewards of the commons on behalf of the citizenry, have an obligation to manage those resources in a way that achieves the greatest good for the municipality and its citizenry as a whole, taking into account all of the competing interests. The deal as currently proposed would transfer a slightly larger Redwood Park to the Recreation and Parks Department in exchange for the ability to cast new shadows on existing parks. The citizens of San Francisco would get increased shadows on existing parks in exchange for a slightly larger park with slightly extended hours. I don't know if any polling has taken place on this particular issue, but it strains credulity to think that many citizens who are not part of the developer group would find this a worthwhile swap.

I strongly urge the Planning Commission to consider adequate and objective alternatives that do not require such a radical change to the Downtown Plan and do not allow the City to squander resources that it should manage in the best interests of the municipality and its citizens.

Thank you for your attention to my concerns.

Regards,

David A. Smolen

Telegraph Hill, San Francisco

file 100443



"Merle Goldstone"  
<merlegoldstone@comcast.net>

04/19/2010 04:18 PM

To <merlegoldstone@earthlink.net>

cc <Board.of.Supervisors@sfgov.org>, <president@thd.org>

bcc

Subject Please reject the 555 Washington EIR

I urge you to reject the 555 Washington EIR, which is badly flawed and to accept the Telegraph Hill Dwellers' appeal. This EIR fails to adequately analyze the impacts from this project that would require "spot" re-zoning of a single parcel to double the height limit from 200 feet to 400 feet.

If approved, this project would:

- violate the City's General Plan;
- cast additional shadows on 4 parks (Ferry Park, Maritime Plaza, Sidney Walton Park and Redwood Park);
- ignore the voter mandated Proposition K (which bans additional shadows on public parks);
- increase wind impacts above what the Planning Code allows;
- add more cars than allowed by the Code;
- require the vacation and conveyance of a public street (Mark Twain Alley/Merchant Street) to be added to the development site; and require numerous other exceptions and variances from the Code.

I hope that you will reject the EIR and oppose this project unless it is scaled back to the originally proposed size.

Merle Goldstone  
289A Union Street  
San Francisco, CA 94133



File 100443



Richard Reineccius  
<richard\_reineccius@yahoo.com>  
04/19/2010 04:24 PM

To NAP AdvisoryCom <nap40th-advisory@yahoogleroups.com>  
cc Director of Cultural Affairs SF <luis.cancel@sfgov.org>, City Librarian SF <Luis.Herrera@sfgov.org>, Supervisor John Avalos <John.Avalos@sfgov.org>, Supervisor David Chiu  
bcc

Subject Year of Mark Twain - Save Mark Twain Lane

1) Tomorrow at 4 pm the SF Board of Supervisors will vote to accept the Environmental Impact Report on the major condo tower proposed for 555 Washington, next to the TransAmerica ^, reverse same, or put off a decision by calling for the Board Clerk to prepare findings on how/why to reverse the EIR certification passed by the Planning Commission.

Part of the planned development will SELL MARK TWAIN LANE (aka Mark Twain Place, or MT Alley) to the developer, AEGON CORP of NY and London (which owns the TA Pyramid and the whole Montgomery Block", give the small Redwood Park to the City's Rec/Park Department.

There will be an opportunity for PUBLIC COMMENT of 3 minutes/speaker. Board Prez David Chiu is empowered to limit total comment time to 30 minutes.

I opposed the confirming of the EIR, though having another park was a nice idea, partly because of weak historical attention in the staff and developer analysis, which had no mention of doing anything special on the site for Mark Twain, though his alley is the lower end of a slew of tribute streets the length of Columbus Avenue. Joseph Conrad Plaza is at the top end.

It was the very location of The Occidental Hotel, and near The Lick House, where Twain came to fame by penning INNOCENTS ABROAD and other works that first made him famous, before he WENT EAST IN 1868, promising in print to return to live here.

Why did he leave? -- He had written words harshly condemning the SFPD for ignoring POLICE BRUTALITY against Chinese people he had witnessed, had threats to his life over the matter, and the items went unpublished by the Chronicle and other publications for which he worked or freelanced.

2) If you've ever enjoyed any of Twain, SIGN the PETITION TO

DECLARE 2010 the YEAR OF MARK TWAIN across the USA.

=====

JUST DO IT: It's easy and free -- WWW.TWAIN2010.org and click PETITION Clemens/Twain's 175th birthday will be celebrated November 30, the 100th anniversary of his death will be this Wednesday (April 21).

And do nice things on Earth Day on Thursday - Call it "TH'EARTH DAY" fro fun.

rr

File 100443



"Kathy Howard"  
<kathyhoward@earthlink.net>

04/19/2010 01:38 PM

Please respond to  
<kathyhoward@earthlink.net>

To "Bevan Dufty" <Bevan.Dufty@sfgov.org>,  
<Chris.Daly@sfgov.org>,  
<Board.of.Supervisors@sfgov.org>,  
cc  
bcc  
Subject Please Reject the 555 Washington EIR

Dear Supervisor,

Please reject the EIR that has been written for 555 Washington Street.

This EIR fails to adequately analyze the impacts from this project on our parks

#### SHADOWS:

our parkland is too precious to allow additional shadows, no matter how little, on existing parkland. Why are we allowing spot zoning? What is the point of having regulations drawn up with input from many people over a period of time, if anyone can just change the rules for one project.

#### GIFT OF A PUBLIC STREET:

How can we even think of giving away a public street? A lot of us would like that gift – let me know how I apply for that!

#### THREATS TO THE REDWOOD TREES:

In addition, there is the particular threat to the trees in the Redwood Park.

I am a landscape architect. I have experience with preserving tree health during construction and have worked very closely with arborists over the years on this issue.

#### A CONSTRUCTION SITE IS NOT TREE FRIENDLY:

I read with amusement the mitigations proposed to protect the redwood trees with scaffolding and other measures. Anyone who thinks you can build a 420 ft building a few feet away from 60 foot trees and not damage them is being unrealistic. The only possible way the trees have any chance of survival is to have an independent consulting arborist on the work site from the moment the gates are unlocked in the morning until they are closed and locked at the end of each day. AND -- the arborist should bring their lunch. Be sure to budget for the \$200/hr salary.

AND - This cannot be a rubber-stamp arborist. Unfortunately, even in this field, there are people who feel that they have to meet the needs of their employers rather than meeting professional standards of testimony.

AND-- the arborist must have the ultimate authority over everyone on the job to shut it down in a second if he/she feels a tree is even slightly threatened.

AND -- have heavy fines for the slightest damage. As a project gets behind schedule, the builders will evaluate the cost of a delay against any fines for damaging trees. It is not their ultimate goal to protect trees -- it is to complete the project on time. Guess what will be sacrificed?

#### REDWOOD DON'T LIKE WIND:

The increase of wind impact will damage the redwood trees -- they are sensitive to wind and usually grow in sheltered valleys. Think Muir Woods.

#### TREES DEPEND ON THEIR ROOTS -- DAMAGE THE ROOTS, KILL THE TREE:

Let's look at the discussion of tree roots and the statement that redwoods don't have deep tap roots. So, where are the roots? How does a tree that grows 100's of feet tall stand up? Because it has roots that extend laterally. Tree roots can extend 2 times, 3 times or more the height of the tree. So the roots are extending laterally out, under the paving. What will happen when construction runs into them? As the EIR report says, 'hey, that's OK -- we'll just trim any roots that get in the way.'

The document further states that the roots are surface roots. However, what is this project planning to do? It is going to go in and dig around and replant with 'appropriate' plants. This means that every hole that is dug will disturb the surface roots. Every plant that is taken out will disturb the surface roots. This is not a procedure that will be done with a fine air brush - the crew will use sharp shovels to remove the existing plants and to plant new ones. Maybe someone will decide to put in new lights or irrigation -- more trenching and cutting of roots.

#### TREE GROVES ARE ONE UNIT -- THE LOSS OF ONE AFFECTS ALL OF THEM:

Redwoods grow in a grove -- there is no discussion of groves. Trees in a grove grow as a unit. If you damage one, you affect the environmental conditions around all the trees. The loss of one branch affects the neighboring branches. The loss of one tree compromises the long-term viability of all of the other trees.

#### CUMULATIVE EFFECT:

So this project is setting up a situation where construction crews will be running around near the trees with heavy equipment that compacts the soil under the paving, pruning branches, trimming roots, and then digging around the roots that are left. One justification for this project given by project proponents is that it 'gives a park' to the City. What kind of park? Let's not pretend that there will not be a major impact on these redwood trees. The EIR does not effectively address these issues and therefore it should be rejected.

Katherine Howard, ASLA  
Landscape Architect  
San Francisco  
710-2402

File 100443



John Kriken  
<John.Kriken@som.com>  
Sent by: Jennifer Ostergard  
<Jennifer.Ostergard@som.com>  
m>

To "david.chiu@sfgov.org" <david.chiu@sfgov.org>,  
"bevan.dufty@sfgov.org" <bevan.dufty@sfgov.org>,  
"ross.mikarami@sfgov.org" <ross.mikarami@sfgov.org>,  
cc  
bcc

04/19/2010 01:30 PM

Subject 555 Washington EIR

Dear Supervisors,

I am unable to attend the hearing at 555 Washington EIR and with this email I want to request that you reject this EIR for the many reasons that have been presented.

Thank you for your help.

Sincerely,  
John Kriken FAIA, AICP

# SOM

The information contained in this communication may be confidential, is intended only for the use of the recipient(s) named above, and may be legally privileged. If the reader of this message is not the intended recipient, you are hereby notified that any dissemination, distribution, or copying of this communication, or any of its contents, is strictly prohibited and may be unlawful. If you have received this communication in error, please return it to the sender immediately and delete the original message and any copy of it from your computer system. If you have any questions concerning this message, please contact the sender.

File 100443



"Vickie Greenblat"  
<victoria\_Greenblat@sclay.com>

04/19/2010 01:30 PM

To <david.chiu@sfgov.org>, <bevan.dufty@sfgov.org>, <ross.mirkarimi@sfgov.org>, <David.campos@sfgov.org>, <eric.l.mar@sfgov.org>, <john.avalos@sfgov.org>,

cc

bcc

Subject PLEASE REJECT THE 555 WASHINGTON EIR

The EIR fails to adequately analyze the impacts from this project that would require spot-re-zoning of a single parcel to double the height limit from 200 feet to 400 feet; violate the City's General Plan; cast additional shadows on 4 parks (Ferry Park, Maritime Plaza, Sidney Walton Park and Redwood Park); ignore the voter mandated Proposition K (which bans additional shadows on public parks); increase wind impacts above what the Planning Code allows; add more cars than allowed by the Code; require the vacation and conveyance of a public street (Mark Twain Alley/Merchant Street) to be added to the development site; and require numerous of the exceptions and variances from the Code.

Donald Ravitch

James J. Ludwig  
66 Montclair Terrace  
San Francisco, CA 94109

RECEIVED  
BOARD OF SUPERVISORS  
SAN FRANCISCO

2010 APR 21 AM 10:50

File  
100451

Bos-11  
C page

April 14, 2010

BY AK

San Francisco Board of Supervisors  
City Hall, Room 280  
1 Dr. Carlton B. Goodlett Place  
San Francisco, CA 94102-4689

Dear Supervisors:

Nob Hill is not the place for a modern entertainment center as planned by the Masonic Center. Nob Hill has great charm and is fragile to such a program. Nob Hill is a delightful area in which to live and for tourists to visit. It is a high rent district whose property values and property taxes need to be protected for the benefit of the City.

Nob Hill has four first rate hotels; luxurious apartments and condominiums; a few beautiful private homes; Grace Cathedral which has a boys school and fine programs of music and worship; a wonderful park in which to relax; the old-fashioned elegance of The Pacific-Union Club (instead of the high rise Hilton Hotel which 60 years ago was almost approved for that site); the charm of the Cable Car on California Street; the easy movement of automobile traffic on California Street; the excellence of a small number of quiet restaurants; and the lack of noisy bars.

The name, "Nob Hill," signifies elegance. No wonder the Huntingtons, Crocker, Floods, Fairs, Stanfords, Hopkins, and other railroad and silver barons wanted to live and build their homes there.

Please show strength and recognize the nature of Nob Hill and its value to the City as it currently exists and reverse the poor, though well-intentioned, vote of the San Francisco Planning Commission. Attached, please find *Chronicle* Staff Writer, John Cote's, well-written article on the change of the Masonic Center.

Don't spoil Nob Hill. Save it for future generations.

Best regards,



James J. Ludwig

cc: Mayor Gavin Newsom  
Planning Commission

# Not all on Nob Hill happy with upgrade of Masonic Center

By John Coté

CHRONICLE STAFF WRITER

It looks like there's going to be more music on the top of Nob Hill, and not everybody is happy about it.

San Francisco's Planning Commission voted late Thursday to approve a controversial plan to renovate the Masonic Center into a modern entertainment venue and almost double the number of evening shows in one of San Francisco's historic neighborhoods.

It was a hotly disputed issue with undertones of racism and classism that pitted the Masons and Live Nation, the major concert producer chosen to manage the venue, against about a dozen well-heeled homeowners associations and other neighbors concerned about noise, traffic and crime.

"I'm relieved," Lee Smith, a Live Nation official, said after a four-hour meeting where the crowd filled the commission chamber and spilled into two overflow rooms.

But the 4-to-2 vote probably won't be the last word on the 52-year-old auditorium.

The two sides had been in negotiations for months, and even with their vote, commissioners urged them to keep talking. But some opponents may appeal to the Board of Supervisors, and a lawsuit is possible, neighbors said.

"We'll continue to talk," said Stanley Landfair of the Nob Hill Legal Coalition neighborhood group.

For more than 50 years, the venue has hosted artists from Bob Dylan to Van Morrison. Its operators say they have "bent over backward" to address neighbors' concerns, including agreeing to neighborhood cleanup after shows, ending almost all weeknight shows by 11 p.m. and weekend shows by 11:30 p.m., and not allowing buses or trucks to park overnight on California Street.

Backers say revitalizing the building would reverse the flow of entertainment dollars to renovated midsize venues out-

side San Francisco.

The Masons want to lease the center long-term to Live Nation, which has been managing the Masonic for the past 14 months.

The plan calls for about \$6 million in renovations, including pulling out some fixed seats and terracing the auditorium floor. A state-of-the-art sound system would be added.

The venue would get a commercial kitchen, eight bar or concession areas, and a VIP lounge. The capacity would increase from 3,282 people to 3,500 during general admission shows. Events would continue to range from concerts to high school graduations to banquets. The exterior would remain as is.

Evening events like concerts would jump from an average of 50 a year to 95, with a maximum of 70 of those able to be general admission shows.

That increase was a main concern of neighbors, who worry about traffic, graffiti and thousands of potentially drunken people streaming out of a venue across from Grace Cathedral and Huntington Park.

"I don't think any self-respecting city in the world would allow such an inappropriate use," neighbor Bob Dantzler told the commission. "Please use your common sense."

Another neighbor, Stephanie Leta, said she usually feels safe walking home at night but not when there are events at the Masonic.

"It's a scary experience coming home when there's an event going on," Leta said. "It's a very different experience."

Commissioner Gwyneth Borden said she suspected that the concerns over bringing "general admission" audiences to the hilltop neighborhood had roots in racism.

"At the end of the day, (they) don't want people like me, who look like me, coming to Nob Hill," said Borden, who is African American. "I'm sorry, but that's the way I see it."

E-mail John Coté at [jcote@sfchronicle.com](mailto:jcote@sfchronicle.com).

File 100451

Board of  
Supervisors/BOS/SFGOV  
04/22/2010 01:04 PM

To BOS Constituent Mail Distribution,  
cc  
bcc  
Subject File 100451 Nob Hill Masonic Auditorium



"Terrell, William"  
<William.Terrell@morganstan  
leysmithbarney.com>  
04/22/2010 10:48 AM

To <board.of.supervisors@sfgov.org>  
cc  
Subject Nob Hill Masonic Auditorium

---

Dear Supervisors,

My name is Bill Terrell and I reside at 1177 California Street with my wife and twin 4 year old daughters.

I've lived on Nob Hill since 1985, first as a tenant and later as an owner. I've chosen to live here as it's a true neighborhood that is close to my work, museums, parks, restaurants and all the other places that make our city a unique place.

The Masonic has changed greatly over the past several years. Events are later and the noise, traffic and crowds are significantly more obtrusive. Living next door to the facility, my family and I are greatly affected by the events at the center. I find it very difficult (and sometimes unsafe) to walk with my daughters on the sidewalk before evening events. This is unfortunate as Huntington Park is a meeting spot for children and parents in our neighborhood, and the only local playground. Evenings (particularly with daylight savings time) are a time that my kids look forward to; time at the park is special for us. Access to the park has become difficult with scalpers, buses, crowds and the like blocking the sidewalk.

We've also seen a significant increase in the volume of trash (including liquor bottles and cigarette butts) on the south side of California Street. This is a change that is most unwelcome.

Given the troubles with trash, noise and traffic, I respectfully request that you grant the appeal of the issuance of a categorical exemption from environmental review and request the Planning Department to prepare an Environmental Impact report, and to grant the appeal of the conditional use authorization.



File 100451  
cc: clage

Board of  
Supervisors/BOS/SFGOV  
04/23/2010 05:33 PM

To BOS Constituent Mail Distribution,  
cc  
bcc  
Subject File 100451 Masonic Auditorium



Ian Glidden  
<ian\_glidden@yahoo.com>  
04/23/2010 01:26 PM

To board.of.supervisors@sfgov.org  
cc  
Subject Masonic Auditorium

Members of the San Francisco Board of Supervisors,

I am writing to ask you to vote deny the appeal of the Masonic Auditorium's recently approved Conditional Use Permit, located on Nob Hill.

Despite uneasy economic times, Live Nation has taken up the duty of reviving one of San Francisco's most iconic and only mid-sized venues, ensuring that live entertainment and cultural ceremonies stay where they belong: in the city.

It was well discussed at the Planning Commission Hearing that throughout the time they have managed the venue, Live Nation has brought several large performances to the venue while placing an even greater importance on the safety and security of neighbors and their families. The fear tactic arguments the opponents suggest simply have not been a fact of record.

Please help the Masonic compete with other venues such as the Fox Theater in Oakland and the Shoreline in Mountain View. Your support will help this time-honored venue continue to serve the Bay Area.

Ian Glidden  
(415) 279-4644 - ian\_glidden@yahoo.com

2221 Gough Street  
San Francisco, CA 94109

File 100451  
100053

Board of  
Supervisors/BOS/SFGOV  
04/27/2010 11:24 AM

To BOS Constituent Mail Distribution,  
cc  
bcc  
Subject Masonic Center supporter



"Sean Shopes"  
<sds@sds-investigations.com  
>  
04/23/2010 06:40 PM

To <board.of.supervisors@sfgov.org>  
cc  
Subject Masonic Center supporter

To the Board of Supervisors:

I am writing to you in support of the continued existence of the Masonic Center as a mid-sized venue for music. This is a fantastic venue for seeing bands and musicians who cannot fill a stadium but are too well-known for smaller clubs. The dramatic entryway and excellent acoustics are a real treat for a music fan like myself and I would hate to see a few vocal NIMBYs scuttle a resource that belongs to all San Franciscans. Every time my wife and I have seen a show there we have had dinner in the area, paid for parking at the Sutter garage and have otherwise patronized an area we would not normally have gone to. We are both small businesspeople and we behave ourselves (lest opponents of the venue paint us with another brush). Support the arts in SF! Oakland is quickly replacing SF as a go-to city for these types of artists (i.e. the splendid Fox Theater) – don't let it all slip away! Thanks for reading.

Best,  
Sean Shopes

SDS Investigations  
2200 Palou Avenue  
San Francisco, CA 94124  
415-401-0008t, 415-401-0009f  
CA PI 25248

15

April 16, 2010

Clerk of Bd of Supervisors  
Angela Calvillo  
1 Dr. Carleton B. Goodlett Place  
San Francisco, Ca 94102

Dear Mrs Calvillo

I have been a resident of Meadow Park for 47 years. I'm 73 years old & in good health. It concerns me very much that the planning commission are thinking about putting up antennas in the Reformers Church Steeple. The exposure of low frequency electromagnetic radiation & radio frequency radiation is definitely not wanted in this (my) neighborhood.

Please do not allow this to happen.

Thank you for listening to my concerns

Sincerely,

Beverly Tom  
121 Bella Vista Way  
San Francisco, Ca  
94127

RECEIVED  
BOARD OF SUPERVISORS  
SAN FRANCISCO

2010 APR 19 PM 3:53

BY AK

Board of  
Supervisors/BOS/SFGOV  
04/27/2010 06:19 PM

To BOS Constituent Mail Distribution,  
cc  
bcc  
Subject Miraloma Park Regional Antennae



bfjarno@aol.com  
04/25/2010 01:59 PM

To linda.avery@sfgov.org, adrian.putra@sfgov.org,  
board.of.supervisors@sfgov.org  
cc  
Subject Miraloma Park Regional Antennae

I am writing to inform you of my position against the installation of the proposed mobile tower at 480 Teresita at the Miraloma Community Church. I reside within 50 feet of the location with my family including small children. I urge you to listen to the residents of this community to stop this project that has been pushed through without our comments as well as the possible health risks, it's violation of local zoning laws and affect on the neighborhood. I trust that our elected officials will respect the views of it's constituents and stop this project now.

Brian F Jarnutowski  
500 Teresita Blvd.  
San Francisco, Ca. 94127

16

✓File 10000  
✓cc: all sups.  
(Chiu, Kirkauim  
Dufty)  
✓page

Board of  
Supervisors/BOS/SFGOV  
04/23/2010 05:31 PM

To BOS Constituent Mail Distribution,  
cc  
bcc  
Subject Fw: Please pass Sit/Lie



Ambiance Antiques  
<showroom@ambianceantiques.com>  
Sent by:  
ambianceantiques1@gmail.com

To David.Chiu@sfgov.org, Eric.L.Mar@sfgov.org,  
Bevan.Dufty@sfgov.org  
cc board.of.supervisors@sfgov.org  
Subject Please pass Sit/Lie

04/23/2010 11:54 AM

Dear Members of the Public Safety Committee, and all Supervisors:

I am so happy that a Sit-Lie ordinance is being considered for San Francisco!

I started Ambiance Antiques 35 years ago and have had an antiques showroom in the San Francisco Design District for over 20 years. My husband and I live in Potrero Hill, as do two of my sons.

Our showroom is located in the Showplace Square West building - adjacent to the Jewelry Center, across the street from Bonhams & Butterfields auction house, and two blocks west of the SFDC Galleria. We have a spectacular 6,000 sq. ft. space with millions of dollars of 18th & 19th Century antiques. The space is so special that we have begun renting it out for weddings and events.

But many people simply do not "venture" to our showroom because they are afraid to walk past the scary individuals encamped on the sidewalks under the freeway. This is not speculation ... I have had customers explicitly tell me so.

The type of people in the encampments has been getting worse. Up until several months ago, our building's security guard was usually able to have them leave in the morning because he had a good relationship with them. But they were gradually replaced by people that are more mean and criminal. Since then, our guard gave up because they would not move for him, and he was afraid of them.

A few months ago I took a picture of an encampment to show the police. The people in the encampment saw me take the picture, and the next morning I found one of my showroom windows broken. A month ago, my husband and I went to our showroom at night and found that the two planters outside our door smashed to pieces - there were a group of about 8 street people across the street when we arrived.

The people in the encampments often give me nasty looks when I pass by. Going to work is no longer a pleasure for me. And when I leave work in the evening, I fear for my safety.

And it's not just me. Many of the young women who work in our area move their car in the late afternoon to be close to their building's entrance so they do not have to walk far to their car in the evening.

I hear that some people oppose Sit/Lie because they worry about tourists not being able to sit on suitcases or girl scouts not being able to sell cookies. Well, I worry about having to close or move my business, and I worry about my safety and the safety of those I work with.

I beg you to give Sit/Lie a chance so that I can once again enjoy working in San Francisco.

Sincerely,

Teresa Beltramo

--

Ambiance Antiques & Venue

550 15th St., #1

San Francisco, CA 94103

415-626-0145

[www.ambianceantiques.com](http://www.ambianceantiques.com)

[www.theambiancevenue.com](http://www.theambiancevenue.com)

Board of  
Supervisors/BOS/SFGOV  
04/27/2010 06:18 PM

To BOS Constituent Mail Distribution,  
cc  
bcc  
Subject Please move forward with the NoSit/No Lie Ordinance



"Lance"  
<lancet1@comcast.net>  
04/25/2010 01:15 PM

To <board.of.supervisors@sfgov.org>,  
<gavin.newsom@sfgov.org>  
cc  
Subject Please move forward with the NoSit/No Lie Ordinance

Dear Mr. Mayor and Board of Supervisors – I'm writing to ask that you move forward with the No Sit/No Lie ordinance. The quality of life in San Francisco is important to me. I feel great compassion for those who are homeless in our city, however, to use a sidewalk as a substitute home is also unacceptable to me. This ordinance will improve the life of residents and visitors walking our sidewalks, while encouraging those who need shelter to seek out facilities available to them.

Thank you for your consideration.

Lance Thomson  
San Francisco

17



Mary Jessup  
<maryjessup2004@yahoo.com>

04/19/2010 04:07 PM

To Board of Supervisors <board.of.supervisors@sfgov.org>

cc

bcc

Subject Please Consider

History: This message has been forwarded.

Dear Supervisors,

Before passing the new sit-lie law, please consider - taking a short walking tour around your city. Perhaps you could stroll around Union Square, the Civic Center, maybe the Mission, even the Tenderloin. Look. See. View. Observe.

- \* No benches (except at Union Square).
- \* Very few bus stop kiosks with seats, most bus stop kiosks with seats have been removed.
- \* A few street islands contain plants - these areas have been categorized as "parks" or "open space" - but there's no place to sit, and besides, would you want to have a picnic in the middle of the street?
- \* And the point is - there's no place to sit.

The citizens in SF are old with canes, young with children, and college kids, workers, and so forth. When outside, where can they sit? if they get tired, or need to feed the baby?

SF is a tourist city. Tourists sometimes sit on the sidewalks.

Please consider the people of your city, and the visitors. Is it polite to put people in jail for sitting? Is it appropriate? Courteous? Respectful?

Please consider also that SF is a tolerant, friendly place. Sit-lie law is not tolerant, not friendly. Sit-lie law is incongruent with our values. Sit-lie law is bad law. Please vote against it.

Thank you.

18



File  
#091251



pmonette-shaw  
<Pmonette-shaw@earthlink.net>

04/19/2010 01:12 PM

Please respond to  
Pmonette-shaw@earthlink.net

To Board of Supervisors <Board.of.Supervisors@sfgov.org>

cc

bcc

Subject Urgent: Testimony Regarding Revisions to Integrated  
Project Delivery Contracting in San Francisco Administrative  
Code

April 19, 2010

Dear Members of the Land Use and Economic Development Committee,

I believe that you should reject the ordinance to amend San Francisco's Administrative Code to revise the integrated project delivery contracting procedures for a number of reasons outlined in the attached PDF file.

The new "non-cost criteria" process grants too much subjective leeway to City Department heads. None of the five criteria provided are mandatory, so they may be replaced by a department head with any fluctuating subjective criteria they may want for a particular a project or contract in order to steer construction contracts to favored bidders.

The new language includes a provision that cost criterion "shall constitute not less than 65% of the overall evaluation" of proposals received from bidders, allowing department heads to utilize 35% — over one-third — of the evaluation on subjective, fluctuating non-cost criteria will almost certainly lead to project cost overruns and may result in no cost savings on City construction projects. Giving over one-third of the evaluation to non-cost criteria may result in not awarding a contract to the actual lowest bidder under just the cost criteria, thereby potentially resulting in more costly City construction projects.

Paragraph F(3) appears to permit departments to award any contract to the highest-ranked construction manager/general contractor rather than to the lowest bidder. This may potentially completely turn contracting on its head in San Francisco, and there appears to be no public oversight to the process of awarding contracts to the highest-ranked bidder rather than to the lowest cost bidder, leading to spending more on construction projects than necessary.

Given the City's dismal oversight of the various categories of change orders (owner-initiated change orders, design error change orders, design omission

changes orders, site condition change orders, etc.), introducing non-cost criteria — without any oversight by the Citizen's General Obligation Oversight Committee or any other public oversight mechanism — may lead to a whole new category of change orders to correct errors in construction projects introduced by the non-cost criteria.

I urge the Board of Supervisors to reject entirely these proposed changes to the Administrative Code.

Sincerely,



Patrick Monette-Shaw [atx1uxm.pdf](#)



Aaron Goodman  
<amgodman@yahoo.com>  
04/19/2010 12:36 PM

To board.of.supervisors@sfgov.org  
cc David.Chiu@sfgov.org, Eric.L.Mar@sfgov.org,  
Sophie.Maxwell@sfgov.org  
bcc

Subject Land-Use Meeting Monday April 19th, 2010 - Item #6  
[091251]

***Q: Do you build a road and its infrastructure before a housing development or after?***

***A: You ensure that adequate infrastructure is in place PRIOR to the development being permitted or approved, and you review all neighborhood impacts for "fair-share" impact fees, or essential services that require additional fees for the public benefit and safety.***

**Land-Use Meeting Monday April 19th, 2010 - Item #6 [091251] -  
Development Fee Collection Procedure; Administrative Fee**

"We put the cart before the horse, and shut the stable door when the steed is stolen" - Cicero (106 BC - 43 BC)

A Question/Answer and Simple proverb to remind the SF BOS of the issue today on allowing housing development and the rush to "green-light" projects without adhering accurately to CEQA and the concerns of impacts on neighborhoods and communities based on the huge rush by developers and private interests to build in multiple neighborhoods in SF.

The images are always pretty such as the "Better Idea for Treasure Island" in the SF Chronicle today, or the Parkmerced "Vision" plans, and the SFSU/CSU Masterplan, but the reality often misses where and how people will get from point A to point B. As a transit-first priority city, we seem to be lacking the funds for MUNI. Well when you defer up-front fees, you incentivize driving over transit. You also incentivize the profiteering of housing OVER the ESSENTIAL NEED for housing.

Perhaps its time to ensure that developers begin to realize that this city wants our ducks in a row in terms of what is proposed, we want them to put there "best" arrangement forward to ensure that the infrastructure and city planned co-development of projects ensures that we see the community fees adequately addressing neighborhood concerns.

Please ensure that the deferral of fees proposed and the push by the Mayor to give carte-blanche to our cities neighborhoods, ensures upkeep, maintenance, infrastructure, and keeping the workhorse in front of the cart. We too often are seeing neighborhood infrastructure and future planning of transit and community benefit being side-lined, scaled-back, or miss-appropriated in the rush to approve projects.

Any neighborhood resident with some semblance of comprehension of Architecture/Urban Planning and Infrastructure would see the reality and effect that is being missed in the deferral of the fees for any reason.

ENSURE that we have a fair deck of playing cards, and we dont miss the wisdom of a proverb that has consistent application in our city today.

Apologize for missing the meeting today, but public transit does not get me there on time right now from many neighborhoods...

Sincerly

Aaron Goodman (District 11 Resident)  
[amgodman@yahoo.com](mailto:amgodman@yahoo.com)



**DEBRA BOWEN | SECRETARY OF STATE  
STATE OF CALIFORNIA | ELECTIONS**

1500 11th Street, 5th Floor | Sacramento, CA 95814 | Tel (916) 657-2166 | Fax (916) 653-3214 | www.sos.ca.gov

RECEIVED  
BOARD OF SUPERVISORS  
SAN FRANCISCO  
2010 APR 19 PM 4:05

TO: INTERESTED PARTIES  
FROM: *[Signature]*  
RHONDA PASCUAL, PROGRAM MANAGER  
BALLOT PAMPHLET AND INITIATIVES  
SUBJECT: CASSETTE RECORDING OF STATE VOTER INFORMATION GUIDE

Enclosed please find a copy of the cassette-recorded version of the Official California Voter Information Guide for the June 8, 2010, Statewide Direct Primary Election.

A "set" consists of three cassettes. The cassettes include information about Propositions 13 through 17.

The following information is provided for each of the measures: what a "yes" and "no" vote means, as prepared by the Legislative Analyst; the impartial analysis prepared by the Legislative Analyst; and the arguments for and against the measure, rebuttal arguments, and contact information, as provided by the argument authors.

Also provided is a list of statewide candidates and whether or not those candidates have accepted campaign spending limits. Candidate statements from those candidates who have accepted the campaign spending limits and who chose to purchase space in the Voter Information Guide for their candidate statement are included, as well as candidate statements for U.S. Senate Candidates. U.S. Senate candidates are not subject to the expenditure limits.

Finally, we have provided a brief letter from the Secretary of State, the Voter Bill of Rights, and other helpful election information.

The cassettes are beep-tone indexed and playable on any commercially available cassette recorder, as well as on Talking Book Recorders.

Our office is asking for your help in making these cassettes available to persons who are blind or otherwise visually impaired. To obtain additional copies of these cassettes, free of charge, please call the Secretary of State's Elections Division at (916) 657-2166.

For a downloadable version of the Voter Information Guide please visit [www.voterguide.sos.ca.gov/audio/](http://www.voterguide.sos.ca.gov/audio/).

To assist us in providing the best possible service to California voters, please send any suggestions regarding this cassette recording to the Secretary of State's Office, Elections Division, Attn: Rhonda Pascual, 1500 11<sup>th</sup> Street, 5<sup>th</sup> Floor, Sacramento, CA 95814.

100053

Board of  
Supervisors/BOS/SFGOV  
04/20/2010 02:05 PM

To Victor Young/BOS/SFGOV, Carmen Chu/BOS/SFGOV, Sean  
Elsbernd/BOS/SFGOV, John Avalos/BOS/SFGOV,  
cc  
bcc  
Subject File 100053 Proposed project at Beach Chalet Fields



"Melanie Macchio"  
<melanie@tclf.org>  
04/20/2010 01:35 PM

To <john.rahaim@sfgov.org>  
cc <c.chase@argsf.com>, <board.of.supervisors@sfgov.org>,  
<recpark.commission@sfgov.org>, <don.lewis@sfgov.org>,  
<awmartinez@earthlink.net>,  
<andrew.wolfram@perkinswill.com>,  
<jmbuckley9@comcast.net>, <eskrond@aol.com>,  
<karlhasz@haszconstruction.com>,  
<diane@johnburtonfoundation.org>,  
<Tina.Tam@sfgov.org>, <Linda.Avery@sfgov.org>,  
<Marlena.Byrne@sfgov.org>, <ggppa@earthlink.net>,  
<sfoceanedge@earthlink.net>, <jgold@sferitage.org>,  
<wro@nthp.org>  
Subject Proposed project at Beach Chalet Fields

Dear Mr. Rahaim,  
Please find the attached letter regarding the issuance of a categorical exemption from  
environmental review for the proposed project at Beach Chalet Fields in Golden Gate Park.

Please feel free to contact me with any questions that you may have or if we can provide any  
other information.

Thank you for your consideration in this matter.  
Sincerely,  
**Melanie Macchio**

The Cultural Landscape Foundation  
1909 Q Street NW, 2nd Floor  
Washington D.C. 20009  
202.483.0553



TCLF\_Letter\_Golden\_Gate.pdf

21

6



Clerk of the Board  
File 100067  
SF Ocean Edge

Where Golden Gate Park meets Ocean Beach.....

www.sfoceanedge.org

RECEIVED  
BOARD OF SUPERVISORS  
SAN FRANCISCO  
APR 23 PM 2:48  
AK

April 21, 2010  
Golden Gate Park - Beach Chalet Soccer Development

**Bulletin #6:** Historic American Landscape Survey (HALS) expresses dismay at the Planning Department's categorical exemption for the Beach Chalet Soccer Fields Project.

HALS is a national program, overseen by the National Park Service, with the mission to record historic landscapes in the United States and its territories through measured drawings and interpretive drawings, written histories, and large-format black and white photographs and color photographs. The Northern California Chapter of HALS has 80+ members including landscape architects, historians, persons interested in historic gardens, private practitioners, academics and government employees involved with historic and cultural resources. The chapter is actively engaged in inventorying and documenting historic landscapes in northern California.

*"The Historic American Landscapes Survey, Northern California Chapter, wishes to take this opportunity to express our continued support for further revisions to the Beach Chalet Fields. We were dismayed that the Planning Department issued a categorical exemption for the proposal, but continue to hope that there will be future opportunities for improvements to the project. The categorical exemption is an inappropriate response and appears to have neglected or misinterpreted key elements of the proposal. The findings are also inconsistent with the Secretary of the Interior Standards for the Treatment of Historic Properties (Secretary's Standards) and the Guidelines for Rehabilitating Cultural Landscapes (Guidelines) . . ."*

Please see the attached letter for further information on the significant adverse impact that this development will have on Golden Gate Park.

#### Our Mission Statement

SF Ocean Edge supports active recreation with a win-win solution:

- A full Environmental Impact Report – Golden Gate Park is too important to pave over without examining all the issues and creating alternatives to this project;
- Renovation of the existing grass fields with natural grass, better drainage, and better maintenance;
- Use of the remainder of the funding for other playing fields and parks, providing more recreation opportunities for children all over San Francisco
- Preserving Golden Gate Park's woodland and meadows as a heritage for future generations.



## HALS

Historic American Landscape Survey  
Northern California Chapter  
444 17th Street, Oakland, CA 94612  
Telephone: 510/465-1284

April 20, 2010

Charles Chase  
Interim President, San Francisco Historic Preservation Commission  
Architectural Resource Group  
Pier 9, Embarcadero  
San Francisco, CA 94111

Re: SAN FRANCISCO PLANNING DEPARTMENT Exemption from Environmental  
Review CASE NO. 2010.0016E Beach Chalet Athletic Fields Renovation

Dear Mr Chase,

The Historic American Landscapes Survey, Northern California Chapter, wishes to take this opportunity to express our continued support for further revisions to the Beach Chalet Fields. We were dismayed that the Planning Department issued a categorical exemption for the proposal, but continue to hope that there will be future opportunities for improvements to the project. The categorical exemption is an inappropriate response and appears to have neglected or misinterpreted key elements of the proposal. The findings are also inconsistent with the Secretary of the Interior Standards for the Treatment of Historic Properties (Secretary's Standards) and the Guidelines for Rehabilitating Cultural Landscapes (Guidelines)

Golden Gate Park; listed on the National Register of Historic places under Criterion C (Design) at the national level of significance in the area of landscape architecture, and under Criterion A (Event) at the regional level of significance in the area of recreation and social history, is one of the premier historic landscapes in the United States. The proposed Beach Chalet Soccer Field renovation has the potential to cause a significant adverse impact on a historic resource.

The Categorical Exemption documents finds that the location retains integrity; the ability or the resource to retain integrity may be substantially reduced for the following reasons:

1. The established pattern of development at this end of the park does not include fields managed for continuous play from morning into the evening hours every day of the week in a highly structured physical environment.
2. A large, unobstructed field will not be retained as part of the proposal; grade changes, hard-edged and rectilinear walkways, grids of light poles and fencing create several visual and physical obstructions

Co-chairs:

Betsy Flack

The Garden Conservancy

bflack@gardenconservancy.org

Cathy Garrett

PGAdesign<sup>inc</sup>

garrett@pgadesign.com

Chris Pattillo

PGAdesign<sup>inc</sup>

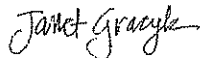
pattillo@pgadesign.com



3. The existing topography of the site is significantly altered with the addition of a hard-edged and raised platform; the perception of natural topography will be permanently altered with the addition of constructed elements
4. All visual boundaries, including those between the fields and the Milwright Cottage/Murphy's Windmill site, will be significantly altered and damaged with the addition of a sixty-foot tall grid of light poles, these lights will become the dominant feature of the area, from within and without the space
5. New paths would not be in keeping with the character of the historic curvilinear roads and pathways; pathways around and through the fields are straight and in keeping with the rectangular form of the fields
6. The removal of 28040 square feet from the existing planted area impacts the historic tree and shrub edge
7. Artificial turf will not support the variety of vegetation suggestive of a meadow, nor will it offer a cooling effect of a meadow
8. The presence of lights for nighttime play remains (glaringly) inconsistent with the entire western end of the park. Staff analysis of the lighting appears inaccurate; these lights are intrusive and incompatible, whether they are lighted or not. The light poles will be visible at all hours, being one-third to one-half as tall as most of the surrounding vegetation, and taller than the Beach Chalet. When operating at night they will be particularly intrusive, keeping lights on until 10 pm would permanently remove the pleasure of viewing sunsets and night skies from the area and would create a commercial lighting statement into this quiet and more naturalistic area of the park. Turning off the lights after 10 pm is not an acceptable solution
9. Missing from the planning department assessment is an analysis of the spatial qualities of the site, which are clearly intended to be naturalistic, as described by the National Register nomination and other sources. Inserting several hard-edged elements and forms permanently alters the appearance and experience of the space, which was intended to appear as a grassy opening naturally occurring in a forest

Some elements, such as the destruction of a naturalistic character with the establishment of strong rectilinear forms and field lighting, would have a significantly adverse effect as individual elements; cumulatively, the proposed project cannot escape having a significantly adverse effect.

Yours truly,



Janet Gracyk, ASLA

Cc: Don Lewis, Major Environmental Analysis, SF Planning Department  
John Rahaim, Director of Planning, San Francisco Planning Department  
Mr. Mark Buell, President, San Francisco Recreation and Park Commission  
San Francisco Ocean Edge  
Golden Gate Park Preservation Alliance  
San Francisco Architectural Heritage  
National Trust for Historic Preservation

----- Forwarded by Angela Calvillo/BOS/SFGOV on 04/22/2010 04:50 PM -----

From: Controller Reports/CON/SFGOV  
To:  
Date: 04/22/2010 12:15 PM  
Subject: Issued: Department of Public Health - Monitoring of A-133 Single Audit Reports for Agencies  
Awarded Federal Funds by DPH in Fiscal Year 2008-09  
Sent by: Patti Erickson

---

The Office of the Controller, City Services Auditor, presents its report regarding the monitoring of nonprofit organizations receiving federal funding through the Department of Public Health (DPH) in fiscal year 2008-09. Of the 28 nonprofit organizations required to submit single audit reports, only one, Maitri AIDS Hospice, did not submit the required report. Of the 27 organizations that did submit their single audit reports, nine had single audit findings. Two organizations, Tenderloin Health and the University of California, also had questioned costs totalling \$61,508 and \$31,284, respectively.

23

RECEIVED  
BOARD OF SUPERVISORS,  
SAN FRANCISCO  
2010 APR 23 PM 4:15

Thank You for introducing  
a ~~AK Resolution~~ Resolution for a Review  
Of the management Contract  
With the San Francisco ~~Zoo~~  
Zoological Society to operate  
the city-owned San Francisco  
Zoo.

It will provide an excellent  
opportunity to address the  
severe and long-standing animal  
welfare problems at the Zoo.

The Zoo must be transformed  
into a world class facility that  
places top priority on the  
well-being of the animals in  
its care.

(24)

The city must include Requirements in the management contract that will ensure the well being of the animals and focus on the rescue of wildlife and exotic animals in need of placement.

The city must institute appropriate animal-focused oversight of the ~~troubled~~ troubled facility.

Respond Back  
By mail

Forman  
7942 Venice  
Howland Ohio  
44484-1510



# SPECIAL PUBLIC NOTICE

**US Army Corps  
of Engineers®**

PROPOSAL TO ACCEPT FUNDS FROM  
THE CALIFORNIA HIGH SPEED RAIL AUTHORITY

RECEIVED  
BOARD OF SUPERVISORS  
SAN FRANCISCO  
2010 APR 22 PM 4:12  
BY [signature]

*SAN FRANCISCO DISTRICT*

Public Notice/Application No.: SPL-2009-00623-VCC

Comment Period: April 21, 2010 through May 21, 2010

Project Manager: Bob Smith (415) 503-6792; Email – Robert.F.Smith@usace.army.mil

This Public Notice announces the preliminary intent of the Los Angeles District to accept funds contributed by the California High Speed Rail Authority (the "Authority"). The Los Angeles District would allocate funds internally and distribute funds to the Sacramento and San Francisco Districts in order to expedite processing of the California High Speed Rail Authority's Department of the Army (DA) permit applications, subject to a series of limitations specified below.

Section 214 of the *Water Resources Development Act of 2000* (WRDA 2000, Public Law No. 106-541) as amended, provides:

(a) The Secretary (of the Army), after public notice, may accept and expend funds contributed by non-federal public entities to expedite the evaluation of permits under the jurisdiction of the Department of the Army.

(b) In carrying out this section, the Secretary shall ensure that the use of funds accepted under subsection (a) will not impact impartial decision making with

respect to permits, either substantively or procedurally.

(c) The authority provided under this section shall be in effect from October 1, 2000 to December 31, 2010.

The Secretary of the Army has delegated this responsibility to the Chief of Engineers and his authorized representatives, including the Commander of the Los Angeles District, U.S. Army Corps of Engineers. The authorization to accept and expend funds from non-Federal public entities is conditional on the extension of Section 214 of WRDA 2000.

**Definition of non-Federal public entities:**

Non-federal public entities are comprised of state and local governmental agencies and Indian tribal governments. They include, but are not limited to, local transportation agencies desiring to expedite highway projects, port authorities wanting permits expedited for marine terminals, flood and storm water management agencies, and governmental economic development agencies seeking to expedite permit

25

applications for certain kinds of work, including industrial or commercial development. The Authority meets this definition.

**How the Los Angeles District would expend the funds:** The Corps' Regulatory Program is funded as a congressionally appropriated line item in the annual Federal budget. Additional funds received by the Los Angeles District from the Authority would be used to augment the Regulatory budgets of the Los Angeles, Sacramento, and San Francisco Districts, in accordance with the provisions of Section 214 of WRDA 2000. Each Corps District would establish a separate account to track receipt and expenditure of the funds. With the supplemental funding, each Corps District would hire additional personnel and pay for support services, both technical and administrative. A Regulatory employee would charge his/her time against a specific account when working on the Authority's permit applications deemed a priority.

At this time, we would like to make you aware that, in the future, each Corps District may also consider accepting and expending funds to expedite evaluations of permits for modification and alteration of Corps of Engineers Projects pursuant to 33 U.S.C. 408. A separate public notice would be issued soliciting public comments prior to any Corps decision to accept such funds for that purpose.

**Activities for which funds will be expended:** Funds would be expended primarily on the labor and overhead of Regulatory personnel processing priority permit applications designated by the Authority. Such permit processing activities

would include, but not be limited to, the following: application completeness review, jurisdictional determinations, site visits, preparation of public notices, preparation of correspondence, meetings (with the non-Federal entity, applicants, agencies and general public), coordination concerning endangered species and cultural resources, public interest review, public hearings, distribution of public notices, analysis of alternatives, compensatory mitigation proposal reviews, and preparation of environmental assessments and permit decision documents. Funds may also be expended to pay for support services or to hire independent contractors to perform select duties; such as site visits, technical writing or review of specific technical documents, such as biological assessments for endangered species and Essential Fish Habitat determinations. No enforcement or compliance activities would be paid from the augmenting funds.

If the Authority's funds are fully expended and are not renewed, their remaining priority permit applications would be handled like those of any other non-participant, in a manner decided by the assigned Regulatory personnel and his/her supervisor.

**Procedures to be used to ensure impartial decision-making:** To ensure the funds will not impact impartial decision-making, the following procedures would apply:

- a. All final permit decisions for cases where these funds are used must be reviewed at least by one level above the decision maker, unless the decision maker is the District Commander. For example, if the decision maker is the Chief of the

Regulatory Division, then the reviewer would be the District Commander.

- b. All final permit decisions for cases where these funds are used will be made available on the Los Angeles District web page and the web page of the District where the permit originated.
- c. The Corps will not eliminate any procedures or decisions that would otherwise be required for that type of project and permit application under consideration.
- d. The Corps will comply with all applicable laws and regulations.
- e. Funds will only be expended to provide priority review of the participating non-federal entity's permit applications.

**Impacts to the Regulatory Program:** We do not expect priority review of the Authority's projects to negatively impact the Los Angeles, Sacramento, or San Francisco District's Regulatory Program, or to increase the time for permit evaluations of other projects since additional staff will be hired to augment this priority review.

**Consideration of Comments:** The Corps is soliciting comments from the public, Federal, State and local agencies, and officials, and other interested parties. Comments will be made part of the record, and they will be considered in determining whether it would be in the public interest to proceed with this action. If the Los Angeles District Commander determines, after considering public comments, that the acceptance and expenditure of the funds is in compliance with the Act and is not

otherwise contrary to the general public interest, the Los Angeles District will implement Section 214 of WRDA 2000 through a signed memorandum of agreement and accept the funds from the Authority. A second public notice will be issued regarding the District Commander's final decision on this matter. Beyond that, no new public notice will be issued if the Authority increases the amount of funds previously furnished, provided that the proposed terms of acceptance and expenditure of funds remains the same.

**Submission of Comments:** Comments on implementing Section 214 of WRDA 2000 will be accepted and made part of the record, and they will be considered in determining whether it would be in the best public interest to proceed with this administrative practice. Interested parties may submit, in writing, any comments concerning this proposal. Comments should refer to Proposed Acceptance of Funds from the California High Speed Rail Authority and the date of this Public Notice, and be forwarded by the comment due date. Comments must be sent to the U.S. Army Corps of Engineers, San Francisco District, Regulatory Branch, ATTN: Robert Smith 1455 Market Street, 16<sup>th</sup> floor, San Francisco, California 94103-1398. Alternatively, comments can be sent electronically to:  
Robert.F.Smith@usace.army.mil

For additional information, please call Robert Smith of my staff (415) 503-6792. This public notice is issued by the Chief, San Francisco District Regulatory Division.

From: Controller Reports/CON/SFGOV  
To: CON-Barometer/CON/SFGOV, CON-Media Contact/CON/SFGOV,  
CON-EVERYONE/CON/SFGOV, CON-CCSF Dept Heads/CON/SFGOV, CON-Finance  
Officers/CON/SFGOV  
Date: 04/19/2010 03:19 PM  
Subject: Controller's Monthly Economic Barometer--February 2010  
Sent by: Debbie Toy

---

Below please find the link to the most recent release of the Controller's Monthly Economic Barometer.

<http://co.sfgov.org/webreports/details.aspx?id=1120>

If you should have any questions, please contact Ted Egan at (415) 554-5268.

Discussion:

The national business press is abuzz with news of economic recovery, but the local statistics are showing few signs of growth as of February 2010. The city's unemployment rate has dipped below 10% again, but on a seasonally-adjusted basis this represents no change from January. Among the pieces of good economic news locally has been several months decline in the City's County Adult Assistance Programs Caseload, which has declined 4.5% just since December. Temporary employment, a leading indicator of broad-based job recovery, has continued its monthly climb and is now higher than it was last February. Total employment in the San Francisco area is still 4.5% below where it was last February.

Both February and March have been strong months for retail sales nationally, with significant growth over the same months last year. Locally, sales tax data is not yet available, but indications from BART and City-owned parking garages suggest no major upswing occurred in February.

In the hotel industry, February marked the first month since September, 2008 that Revenue per Available Room Night (RevPAR) showed annual growth, up 11% from February 2009. However, the monthly seasonally-adjusted trend in RevPAR remains weak, and despite the year of growth, this month's RevPAR was still 29% lower than it was two years ago, in February 2008.

26



Dear Supervisors:

Please stand up for healthcare justice by opposing CPMC's "Master Plan" for St. Luke's Hospital and the new Cathedral Hill facility.

California Pacific Medical Center (CPMC) plans on shrinking St. Luke's Hospital by 62 percent and segregating most services in the Cathedral Hill area. St. Luke's patients would be offered a lower standard of care. This would be a crippling loss of healthcare resources for our city. CPMC's plans amount to medical redlining, and would be a tragedy for the many families around St. Luke's Hospital in need of access to quality healthcare services in our community. A healthy San Francisco cannot discriminate!

I urge you to NOT support CPMC's Master Plan plan unless 1) CPMC agrees to rebuild St. Luke's Hospital at an appropriate size to meet community needs and to provide equal standard of care for all patients, and 2) CPMC signs a binding agreement with the community to treat local residents and businesses, patients, nurses, and hospital staff with the respect we all deserve.

Why I care about St. Luke's Hospital / Why I am against CPMC's current plan:

→ ethics, morality, and

intention are all in question

with this "MASTERS Plan"

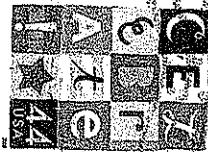
Richard Award 4/8/10

SIGNATURE DATE

3181 Mission St. #137

YOUR ADDRESS

SF CA 94110



San Francisco Board of Supervisors

1 Dr. Carlton B. Goodlett Place

San Francisco, CA 94102

>IV AB

LS:3 MH 02 APR 0102

RECEIVED  
SAN FRANCISCO  
SUPERVISORS  
APR 27 2010

27



"Christine Temple-Wolfe"  
<templewolf@excelinmarketin  
g.com>

04/26/2010 08:52 AM

To <board.of.supervisors@sfgov.org>

cc

bcc

Subject astonished at the arrogance

I am simply outraged, and while I've never formally addressed your Board, I just fell compelled to do so now.

Arizona is a state and has a number of representatives elected to speak on behalf and fight for the rights of their citizenry.

San Francisco Supervisors, it is not your right nor your moral duty to interfere with any state's perspective or policy.

You should be representing your own population, and focusing on what you can do to follow the laws as they exist on the books today.

It is well within their (Arizona's) right to do as they wish with Immigration or any other policy. Their residents are tired of the drug rings, kidnappings, jobs being given to illegal aliens. Did we forget that illegal is illegal...not just a name assigned to incoming populations without drivers licenses!!! The audacity of your Board interfering or passing judgment on another political body is a joke and a waste of your intelligence and good will.

I implore you to not take formal action and waste the tax paying citizens time and money with your morale judgments. Who voted you the morale compass of this country- Stick with what you were elected to do- represent your population in S.F. – and stay out of other people's policies...

**Christine Temple-Wolfe, MBA**

21 C Orinda Way # 354

Orinda, CA 94563

(925) 876-7191 (office)

[www.excelinmarketing.com](http://www.excelinmarketing.com)



28